

Category 5e 2 Port and 4 Port Angled Face Plate



Category 5e 2 Port and 4 Port Angled Face Plate (FJ2-45 + FJ4-45)

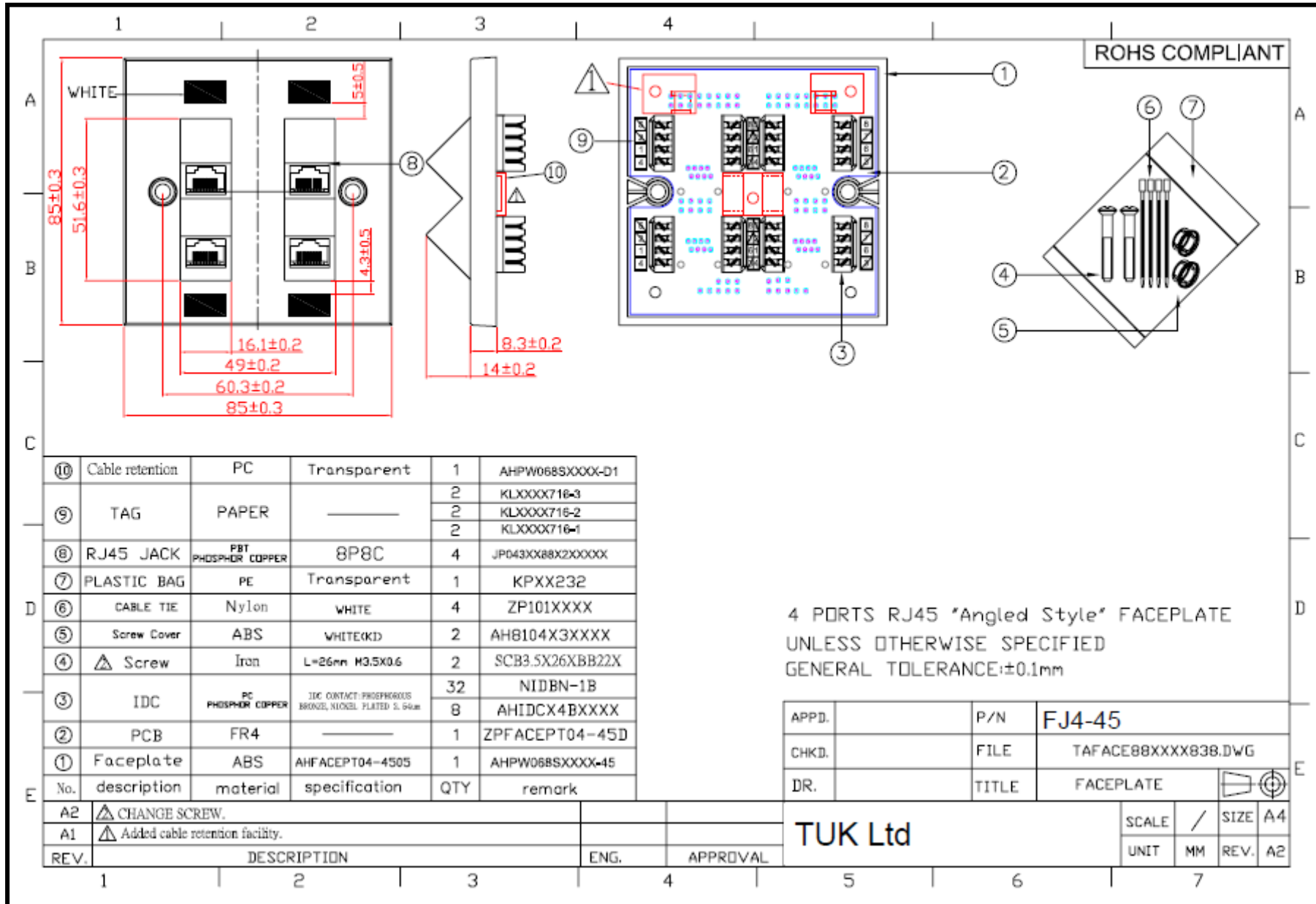
Compact and convenient 2 and 4 port one piece Category 5e faceplates with angled jacks. Both versions fit standard 86x86 back box

Features

- Available with 2 or 4 sockets
- Very compact design – both versions fit standard UK 86x86mm back box
- Angled socket reduces dust ingress and prevents strain on patch leads
- 568B wired, fitted with industry standard LSA+ type IDC connectors
- Labeling and cable tie facility

Specifications

- Weight: 50g (FJ2-45)/ 68g (FJ4-45) (approx)
- Colour: Bright white
- Materials: Faceplate - ABS, PCB – FR4



⑩	Cable retention	PC	Transparent	1	AHPW068SXXX-01
⑨	TAG	PAPER	—	2	KLXXX716-3
				2	KLXXX716-2
				2	KLXXX716-1
⑧	RJ45 JACK	PBT PHOSPHOR COPPER	8P8C	4	JP043XX88X2XXXX
⑦	PLASTIC BAG	PE	Transparent	1	KPXX232
⑥	CABLE TIE	Nylon	WHITE	4	ZP101XXXX
				⑤	Screw Cover
④	△ Screw	Iron	L=26mm M3.5X0.6	2	SCB3.5X26XBB22X
③	IDC	PC PHOSPHOR COPPER	IDC CONTACT PHOSPHOROUS BRONZE, NICKEL PLATED 2.54mm	32	NIDBN-1B
				8	AHIDCX4BXXXX
②	PCB	FR4	—	1	ZPFACEPT04-45D
①	Faceplate	ABS	AHFACEPT04-4505	1	AHPW068SXXX-45
No.	description	material	specification	QTY	remark

4 PORTS RJ45 "Angled Style" FACEPLATE
UNLESS OTHERWISE SPECIFIED
GENERAL TOLERANCE: ±0.1mm

APPD.	P/N	FJ4-45
CHKD.	FILE	TAFACE88XXX838.DWG
DR.	TITLE	FACEPLATE

A2	△ CHANGE SCREW.					
A1	△ Added cable retention facility.					
REV.	DESCRIPTION	ENG.	APPROVAL			

TUK Ltd		SCALE / SIZE	A4
UNIT	MM	REV.	A2