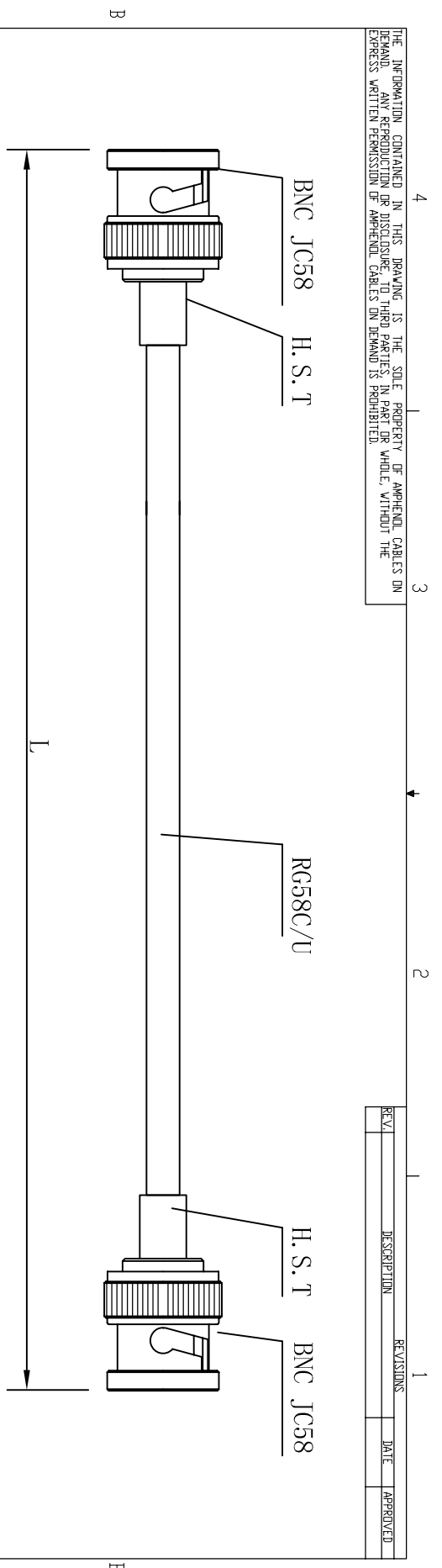


THE INFORMATION CONTAINED IN THIS DRAWING IS THE SOLE PROPERTY OF AMPHENOL CABLES ON DEMAND. ANY REPRODUCTION OR DISCLOSURE, IN PART OR WHOLE, WITHOUT THE EXPRESS WRITTEN PERMISSION OF AMPHENOL CABLES ON DEMAND IS PROHIBITED.

REV.	DESCRIPTION	REVISIONS	DATE	APPROVED



19	CO-0588BNCX200-200	61000	CA BNC M/BNC M RG58C/U 200'
18	CO-0588BNCX200-150	45750	CA BNC M/BNC M RG58C/U 150'
17	CO-0588BNCX200-100	30500	CA BNC M/BNC M RG58C/U 100'
16	CO-0588BNCX200-075	11875	CA BNC M/BNC M RG58C/U 75'
15	CO-0588BNCX200-050	15250	CA BNC M/BNC M RG58C/U 50'
14	CO-0588BNCX200-025	7625	CA BNC M/BNC M RG58C/U 25'
13	CO-0588BNCX200-015	4575	CA BNC M/BNC M RG58C/U 15'
12	CO-0588BNCX200-012	3660	CA BNC M/BNC M RG58C/U 12'
11	CO-0588BNCX200-010	3050	CA BNC M/BNC M RG58C/U 10'
10	CO-0588BNCX200-007.5	2286	CA BNC M/BNC M RG58C/U 7.5'
9	CO-0588BNCX200-006	1830	CA BNC M/BNC M RG58C/U 6'
8	CO-0588BNCX200-005	1525	CA BNC M/BNC M RG58C/U 5'
7	CO-0588BNCX200-004	1220	CA BNC M/BNC M RG58C/U 4'
6	CO-0588BNCX200-003	915	CA BNC M/BNC M RG58C/U 3'
5	CO-0588BNCX200-002.5	762	CA BNC M/BNC M RG58C/U 2.5'
4	CO-0588BNCX200-002	610	CA BNC M/BNC M RG58C/U 2'
3	CO-0588BNCX200-001.5	457	CA BNC M/BNC M RG58C/U 1.5'
2	CO-0588BNCX200-001	305	CA BNC M/BNC M RG58C/U 1'
1	CO-0588BNCX200-000.6	152	CA BNC M/BNC M RG58C/U 6"

NOTES:
 1. MATERIAL:
 BNC MALE:
 BODY :BRASS, NICKEL PLATED
 CENTER PIN :BRASS, GOLD PLATED
 CABLE:RG58C/U
 COLOR IS BLACK

THE TOLERANCE IS:
 <1000 ±5
 >=1000 ±10



NOTES: UNLESS OTHERWISE SPECIFIED

No.	ACD No.	L(mm)	TITLE

UNLESS OTHERWISE SPECIFIED	EAR NO.	
DIMENSIONS ARE IN INCHES		
TOLERANCES ARE		
DECIMALS	APPROVALS	DATE
.X		2006-11-18
.XX		
±.XX		
±.XXX		
XXX		

THIRD ANGLE PROJECTION	RESP ENG	

SIZE DWG. NO.	

SCALE	SHEET	OF

AMPHENOL CABLES ON DEMAND
 20 VALLEY ST. ENDICOTT, NY 13760
 RG58C/U 50ohm Coax Two
 in-line BNC