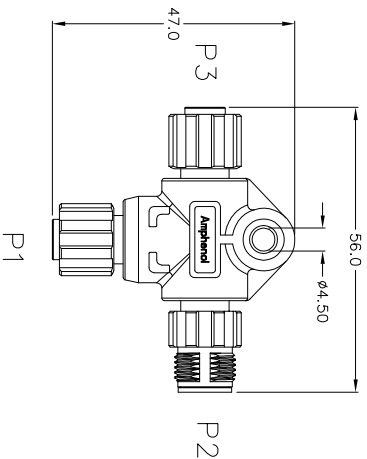
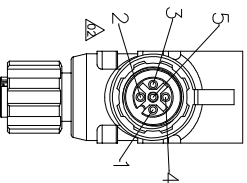
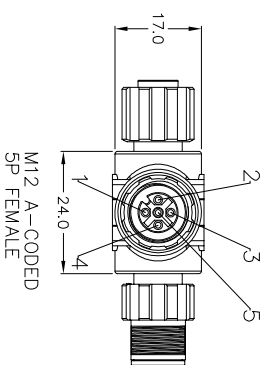
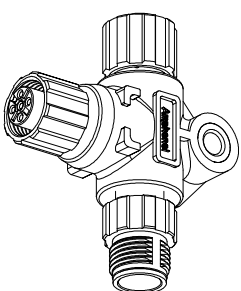
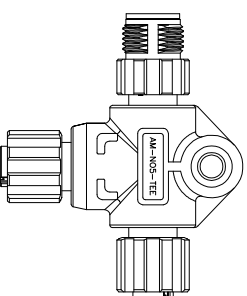
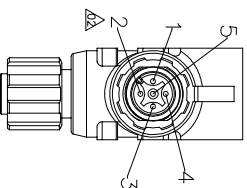


REVISIONS				
REV	ECO	DESCRIPTION	DATE	BY APPR
01	-	PRELIMINARY	2015-8-13	FLAN KING
02	-	Change the key locations	2015-8-14	FLAN KING

M12 A-CODED
5P FEMALE

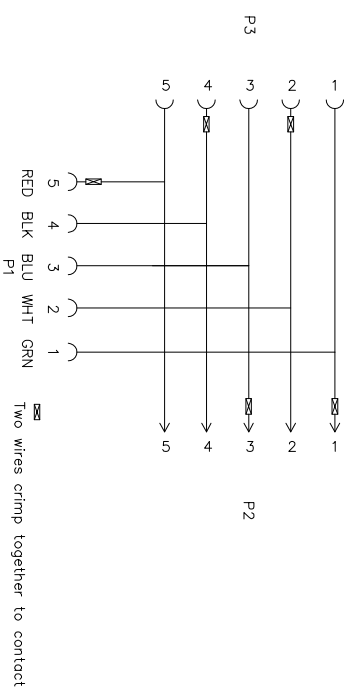


M12 A-CODED
5P MALE



M12 A-CODED
5P FEMALE

WIRING DIAGRAM



customer drawing

QUANTITY	PART NUMBER	DESCRIPTION	ITEM
		MATERIALS LIST	

CONNECTOR MATERIALS
 COUPLING NUT: THERMOPLASTIC, NYLON, UL94 V-0
 INSULATION INSERT: THERMOPLASTIC, NYLON, UL 94V-0
 CONTACT: GOLD FLASH PLATING OVER COPPER ALLOY
 PREMOLD MATERIAL: HOTMELT
 OVERMOLD MATERIAL: THERMOPLASTIC, TPU COLOR: BLACK
 WIRE: UL1007 22AWG 105C 300V, PVC
 ALUMINUM TUBE: ALUMINUM ALLOY
 SEAL: EPDM, RED

ROHS COMPLIANT

CONNECTOR SPECIFICATION
 VOLTAGE RATING: 60V
 AMPERAGE RATING: 4 AMPS
 CONTACT RESISTANCE: $\leq 5\ m\ \Omega$
 INSULATION RESISTANCE: $\geq 100\ M\ \Omega$
 PROTECTION CLASS: IP67
 OPERATING TEMPERATURE: $-25^{\circ}\ C \sim 90^{\circ}\ C$

UNLESS OTHERWISE SPECIFIED		SIGNATURES		DATE	
1) ALL DIMENSIONS ARE IN MILLIMETERS	2) TOLERANCES ARE AS FOLLOWS:	DRAWN:	FLAN	2015-8-13	
1 PL, DEC 41, 27	FRACTIONS 20, 40	ENGINEER:	CHESEA	2015-8-13	
3 PL, DEC 41, 27	ANGLES 15	APPROVE:	KING	2015-8-13	
3) FABRICATION STANDARDS PER:		CUSTOMER:			
4) NAME: SI-METRIC					
MATERIAL SPECIFICATIONS:					
NOTED					
THIS DRAWING IS SUBJECT TO THE AMPHENOL TERMS AND CONDITIONS OF SALE AND PERFORMANCE DATA. SPECIFICATIONS AND PERFORMANCE DATA ARE SUBJECT TO CHANGE WITHOUT NOTICE. REPRODUCTION AND DISTRIBUTION OF THIS DRAWING IS PROHIBITED. ALL MANUFACTURING VARIATIONS MUST BE APPROVED BY AMPHENOL.					
PROCESS SPECIFICATIONS:	IPCM/WHMA-A-620	SCALE:	NONE	SHEET:	1 OF 1
NEXT ASSY:					

Amphenol

Site Systems - www.amphenol-site.com
 44724 Moley Drive
 Clinton Township, MI 48036

M12 TEE