

Vpro

for single phase alternating current, 2 pole

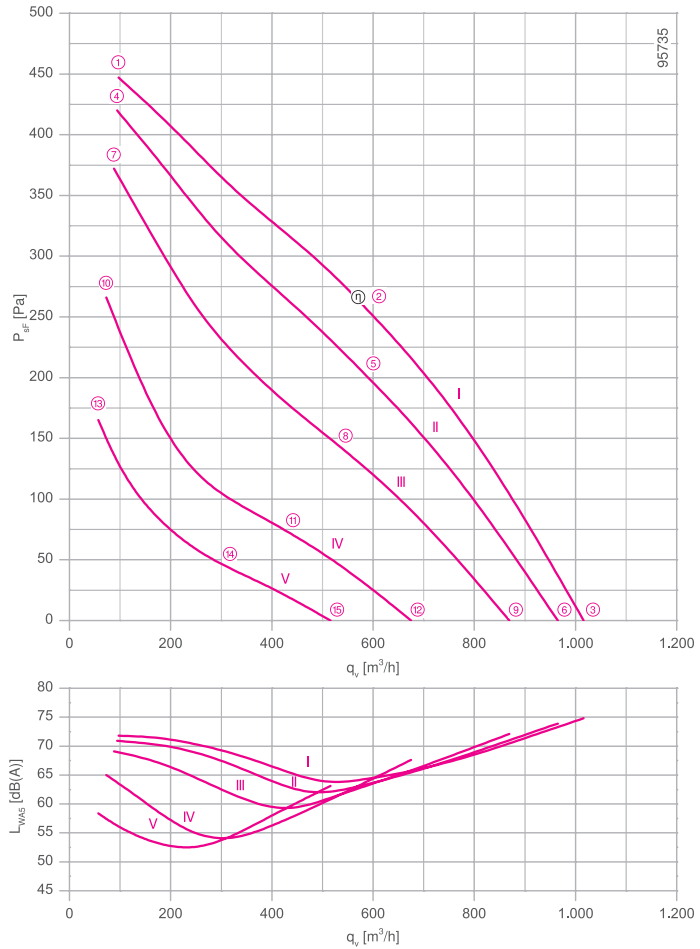
RH22V-2E



Description

Motor technology: AC
 Rated voltage U_N : 1~ 230 V*
 Rated frequency f_N : 50 Hz* (60Hz data available)
 Motor input power P_1 : 0.12 kW*
 Rated current I_N : 0.52 A*
 Rated speed n_N : 2500 min⁻¹*
 Current increase ΔI : 0 %
 Service capacitor C_{400V} : 4.0 μ F
 Thermal class: THCL155*
 Min. permitted ambient temperature $t_{R(min)}$: -30 °C
 Max. permitted ambient temperature $t_{R(max)}$: 60 °C
 Motor protection: Thermal contact
 Impeller : High Performance Composite Material, uncoated, black
 Conformity: CE
ErP-data
 Not subject to ErP regulations ($P_1 < 125$ W)
 * Rated data

Characteristic curve

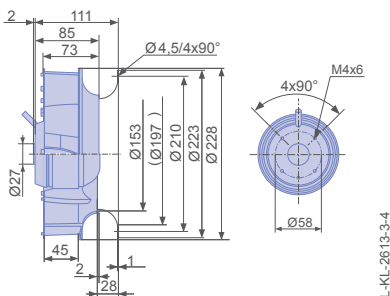


measured with inlet ring, without guard grille according to ISO 5801

- Inlet ring 00407899 Page 450
- Connection diagram 1360-177X SW Page 550
- System components Page 448

Dimensions [mm]

Free-running motor impeller RH
in installation position H/Vu/Vo



Performance data

| Type | Characteristic curve | Voltage | Operating point | Current | Motor input power | Speed | Suction side sound power level |
|-----------------|----------------------|---------|-----------------|---------|--------------------|------------------------|--------------------------------|
| | | U [V] | | I [A] | P ₁ [W] | n [min ⁻¹] | L _{WAS} [dB] |
| RH22V-2EP.WC.2R | I | 230 | ① | 0.40 | 90 | 2720 | 72 |
| | | 230* | ② | 0.52* | 120* | 2490* | 64 |
| | | 230 | ③ | 0.46 | 110 | 2600 | 75 |
| | II | 200 | ④ | 0.40 | 75 | 2630 | 71 |
| | | 200 | ⑤ | 0.52 | 100 | 2300 | 63 |
| | | 200 | ⑥ | 0.46 | 90 | 2470 | 74 |
| | III | 170 | ⑦ | 0.40 | 65 | 2480 | 69 |
| | | 170 | ⑧ | 0.52 | 85 | 1990 | 59 |
| | | 170 | ⑨ | 0.46 | 80 | 2240 | 72 |
| | IV | 135 | ⑩ | 0.39 | 55 | 2100 | 65 |
| | | 135 | ⑪ | 0.46 | 60 | 1600 | 62 |
| | | 135 | ⑫ | 0.44 | 60 | 1730 | 68 |
| | V | 110 | ⑬ | 0.37 | 40 | 1650 | 58 |
| | | 110 | ⑭ | 0.39 | 42 | 1180 | 57 |
| | | 110 | ⑮ | 0.39 | 42 | 1330 | 63 |

*rated data

Fan ordering information

Design RH*
Installation position H/Vu/Vo
Electrical connection Supply cable variable 45cm



Type **RH22V-2EP.WC.2R**
Article no. **161614**

Weight [kg] 2.40

* Inlet ring not included

Control technology

Frequency inverter
Fcontrol 1~



➤ Page 478

Motor protection units
1~



➤ Page 526

Transformer-based
controllers 1~



➤ Page 517

Electronic voltage
controllers 1~



➤ Page 492

Information

Cpro-ECblue

Vpro-ECblue

Vpro

L-series

M-series

System components

Control technology

General notes