

Vpro

for single phase alternating current, 4 pole

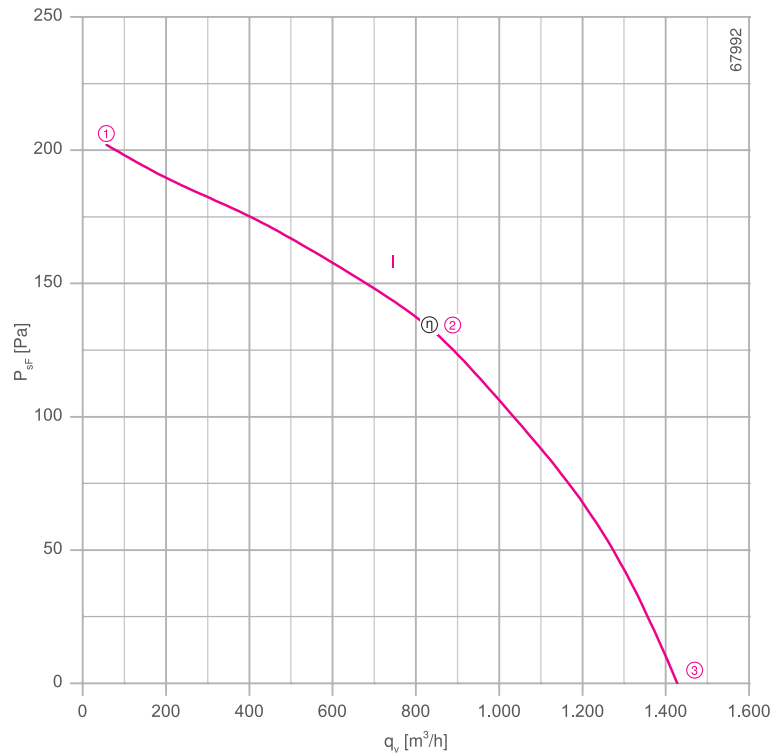
RH28V-4E



Description

Motor technology: AC
 Rated voltage U_N : 1~ 230 V*
 Rated frequency f_N : 50 Hz*
 Motor input power P_1 : 0.11 kW*
 Rated current I_N : 0.53 A*
 Rated speed n_N : 1360 min⁻¹*
 Current increase ΔI : 0 %
 Service capacitor C_{400V} : 4.0 μ F
 Dynamic pressure: $p_{d2} = 9.4 \cdot 10^{-6} \cdot q_v^2$ [Pa]
 Thermal class: **THCL155***
 Min. permitted ambient temperature $t_{R(min)}$: -30 °C
 Max. permitted ambient temperature $t_{R(max)}$: 60 °C
 Motor protection: Thermal contact
 Impeller : High Performance Composite Material, uncoated, black
 Conformity: CE
ErP-data
 Not subject to ErP regulations ($P_1 < 125$ W)
 * Rated data

Characteristic curve

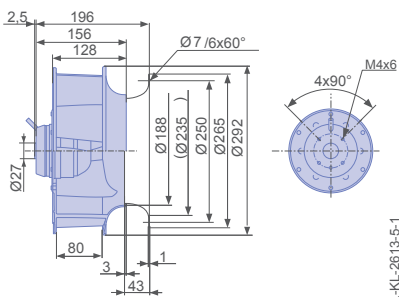


measured with inlet ring, without guard grille according to ISO 5801

- Inlet ring 00275848 Page 450
- Connection diagram 1360-177X SW Page 550
- System components Page 448

Dimensions [mm]

Free-running motor impeller RH
in installation position H/Vu/Vo



L-KL-2613-5-1



Performance data

Type	Characteristic curve	Voltage	Operating point	Current	Motor input power	Speed	Suction side sound power level
		U [V]		I [A]	P ₁ [W]	n [min ⁻¹]	
RH28V-4EP.WD.1R	I	230	①	0.48	90	1420	62
		230*	②	0.54*	110*	1360*	59
		230	③	0.52	100	1390	66


*rated data

Fan ordering information

Design RH*

Installation position H/Vu/Vo

Electrical connection Supply cable variable 45cm



Type RH28V-4EP.WD.1R
Article no. 113298

Weight [kg] 3.30
* Inlet ring not included

Control technology

<p>Frequency inverter Fcontrol 1~</p>  <p>➤ Page 478</p>	<p>Motor protection units 1~</p>  <p>➤ Page 526</p>	<p>Transformer-based controllers 1~</p>  <p>➤ Page 517</p>	<p>Electronic voltage controllers 1~</p>  <p>➤ Page 492</p>
---	--	---	--