



Expertise Applied | Answers Delivered

8755 W. Higgins Road
Suite 500
Chicago, IL 60631

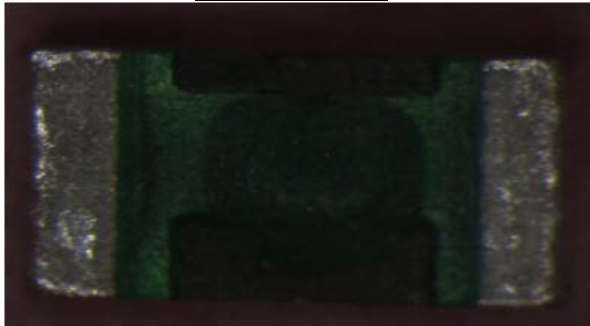
www.littelfuse.com

June 21, 2013

Dear valued customer,

We would like to notify that as of July of 2013, Part Number PGB1010402KR will include a marking to improve its identification by Automated Optical Inspection systems. The different consists of two rectangular marks of ink added to the top of the part. The purpose is to provide enough contrast against the PCB by the vision systems.

Current Top View



New View with ink marks



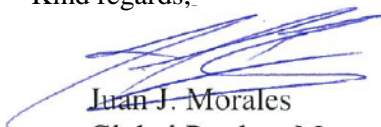
Adding this mark has no effect on the product's performance or specification. As mentioned above, the change is purely cosmetic for the purpose of better identification by Vision systems.

The marking will be added starting with material with date codes of July 15, 2013 onward. You will be able to identify these parts by the date code on the packaging label. (See picture for reference).



Should you have any questions, please feel free to reach out to your Littelfuse representative.

Kind regards,


Juan J. Morales
Global Product Manager
jmorales@littelfuse.com