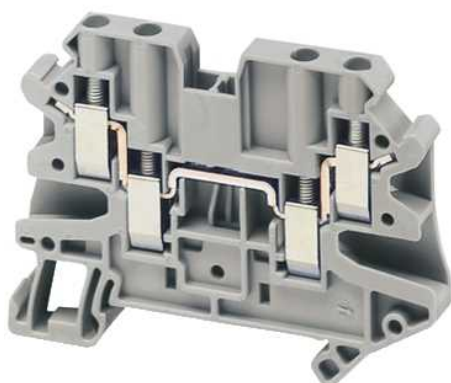


NSYTRV44

Lineryg passthrough terminal block - 4mm² 32A
single-level 2x2 screw - grey



Main

Commercial Status	Commercialised
Range	Lineryg
Product name	TR
Product or component type	Terminal block
Device short name	TRV
Terminal block type	Passthrough
Terminal block level	1
Mounting mode	Clip-on
Nominal cross section	4 mm ²
Length	65.4 mm
Colour	Grey
Quantity per set	Set of 50

Complementary

Width	6.2 mm
Height	47.5 mm
Connections - terminals	2 x screw terminal: upstream 2 x screw terminal: downstream
Number of connections	4
Connection position	Sideways
Number of measurement input	2
Cable cross section	0.14...6 mm ² , solid 0.14...6 mm ² , flexible without
Tightening torque	0.6...0.8 N.m
Wire stripping length	9 mm
Tool type	Disconnection: screwdriver Connection: screwdriver
[Ue] rated operational voltage	352 V conforming to ATEX Exe II Ex II 2 GD 150 V UL 500 V conforming to EN/IEC 60947-7-1
[Ie] rated operational current	29 A conforming to ATEX Exe II Ex II 2 GD 30 A UL 32 A conforming to EN/IEC 60947-7-1
Material	Polyamide 6/6 (insulating case)
Dielectric loss	0.01 at 1 MHz conforming to VDE 0303-T4 0.01 at 1 MHz conforming to IEC 60250
Dielectric constant	3.7 at 1 MHz
Resistivity	10000 MΩ.m conforming to VDE 0303-T30 10000 MΩ.m conforming to IEC 60093
Surface resistance	1000 GΩ conforming to VDE 0303-T30 1000 GΩ conforming to IEC 60093
Creep resistance	500 CTI (> 400 kB) conforming to VDE 0303-T30 500 CTI (> 400 kB) conforming to IEC 60093
Flame retardance	V0, thickness 0.8 mm conforming to UL 94
Product weight	17 g

The information provided in this documentation contains general descriptions and/or technical characteristics of the performance of the products contained herein. This documentation is not intended as a substitute for and is not to be used for determining suitability or reliability of these products for specific user applications. It is the duty of any such user or integrator to perform the appropriate and complete risk analysis, evaluation and testing of the products with respect to the relevant specific application or use thereof. Neither Schneider Electric Industries SAS nor any of its affiliates or subsidiaries shall be responsible or liable for misuse of the information contained herein.

Range compatibility	TeSys Pragma Kaedra Spacial Prisma - Pack Prisma - PH Prisma - P Prisma - G
Product compatibility	Spacial enclosures

Environment

Product certifications	ATEX CSA DNV GL GOST LR UL IEC-Ex
Dielectric strength	1000 V conforming to IEC 60243-1
Ambient air temperature for operation	-40...130 °C conforming to VDE 0304-T21 -40...130 °C conforming to IEC 60216-1