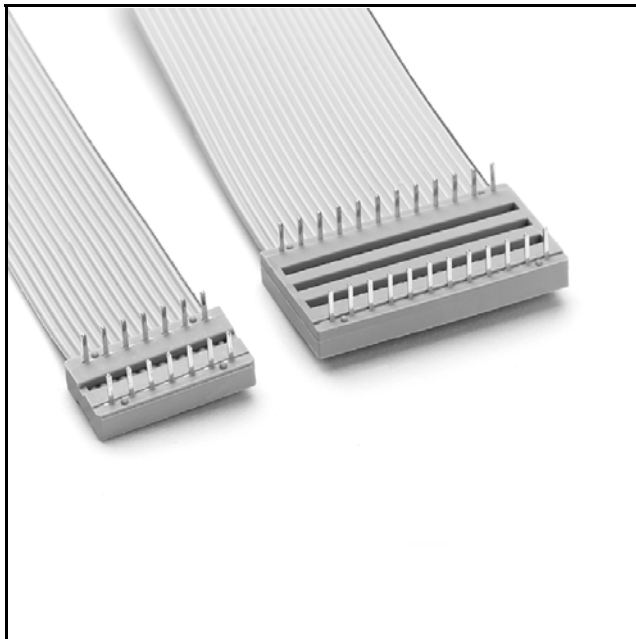


3M™ Molded DIP

.100" × .300" or .600" Cable Assembly Connector

877 Series



- Part of a complete cable assembly
- Mates with industry standard IC sockets / .100 × .300 inch up to 20 contacts and .100 × .600 inch between 24 and 40 contacts
- One piece, molded-on construction with integral strain relief
- Low profile allows close stacking between components and boards
- Molded-on solder stand-offs facilitate flux removal
- Gold or matte tin plating options
- Closed-end construction
- See Regulatory Information Appendix (RIA) on TS-2149 for chemical compliance information

Date Modified: February 12, 2007

TS-2152-03
Sheet 1 of 2

Physical

Insulation

Material: Glass Filled Polyester (PBT)

Flammability: UL 94V-0

Color: Gray

Contact

Material: Copper Alloy (C521)

Plating

Underplating: 50 - 150 μ" [1.27 - 3.81 μm] Nickel

U-Slot and Solder Tails: 300 - 400 μ" [7.62 - 10.16 μm] Matte Tin or
15 μ" [0.38 μm] or 30 μ" [0.76 μm] Gold

Wire Accommodation: 26 and 28 AWG Solid or Stranded

Marking: 3M Logo & Part Identification and Contact Position Numbers

Electrical

Current Rating: 1 A

Insulation Resistance: $> 5 \times 10^9 \Omega$ at 500 V_{DC}

Withstanding Voltage: 1000 V_{RMS} at sea level

Environmental

Temperature Rating: -55°C to +105°C

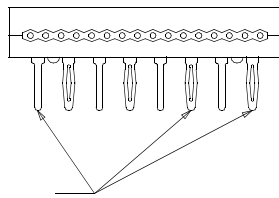
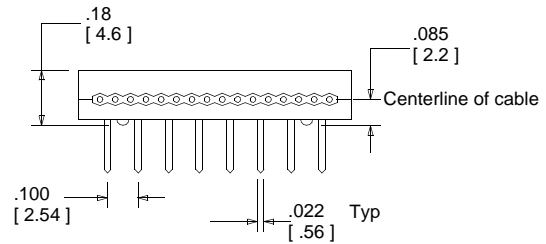
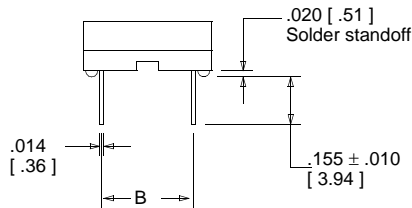
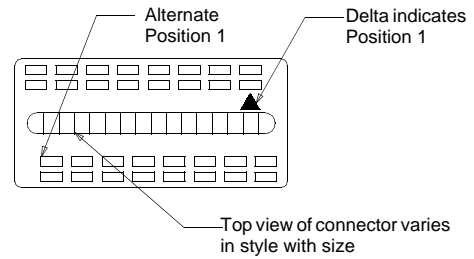
UL File No.: E68080

3M™ Molded DIP

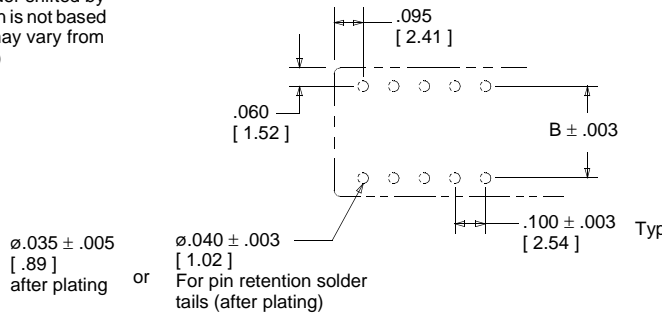
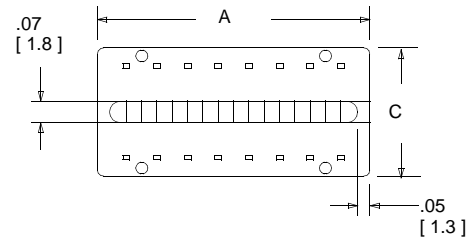
.100" × .300" or .600" Cable Assembly Connector

877 Series

Number of Contacts	Dimensions		
	A	B	C
6	.39 [9.9]	.300 [7.62]	.42 [10.7]
8	.49 [12.4]	.300 [7.62]	.42 [10.7]
14	.79 [20.1]	.300 [7.62]	.42 [10.7]
16	.89 [22.6]	.300 [7.62]	.42 [10.7]
18	.99 [25.1]	.300 [7.62]	.42 [10.7]
20	1.09 [27.1]	.300 [7.62]	.42 [10.7]
24	1.29 [32.8]	.600 [15.24]	.72 [18.3]
28	1.49 [37.8]	.300 [7.62]	.42 [10.7]
28	1.49 [37.8]	.600 [15.24]	.72 [18.3]
40	2.09 [53.1]	.600 [15.24]	.72 [18.3]



Retention contacts oriented as shown every other contact with the first and second row order shifted by one contact. (Orientation is not based on Delta location and may vary from connector to connector)



Recommended Mounting Hole Pattern

(Shown from mounting side of board)

Inch [mm]			
Tolerance Unless Noted			
	.0	.00	.000
inch	±.1	±.01	±.005

[] Dimensions for Reference Only

Ordering Information

See TS-2149 technical drawing for Ordering Information on a complete cable assembly.

TS-2152-03
Sheet 2 of 2