

**Steel carrier rail; 35 x 15 mm; 1.5 mm thick; 2 m long; slotted;
similar to EN 60715**

Item No.: 210-197



Steel carrier rail; 35 x 15 mm; 1.5 mm thick; 2 m long; slotted; similar to EN 60715

Marking

RoHS ✓
Compliant

Business data

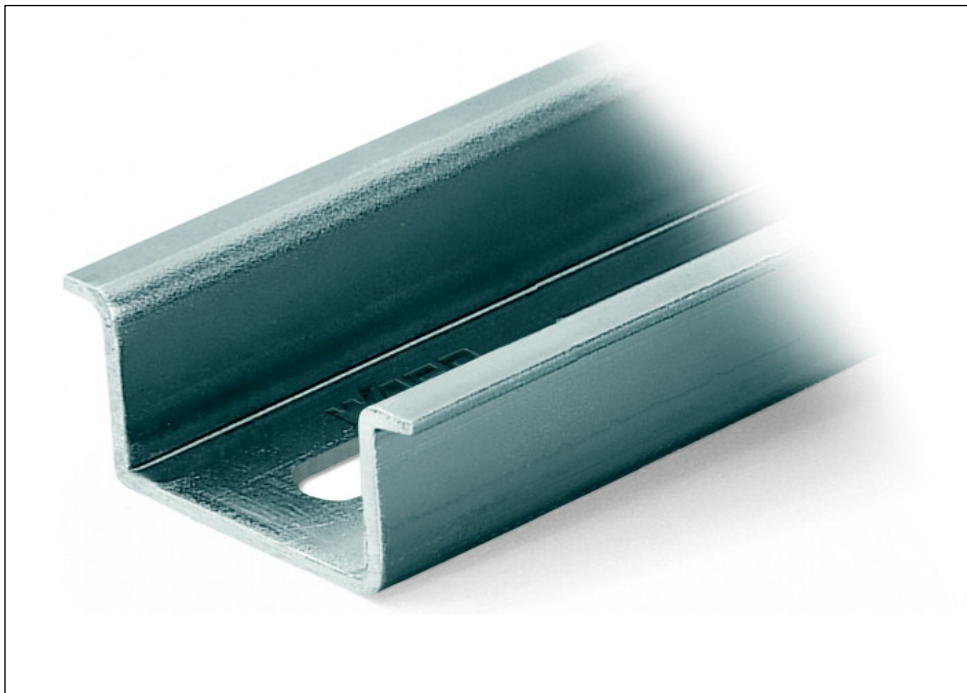
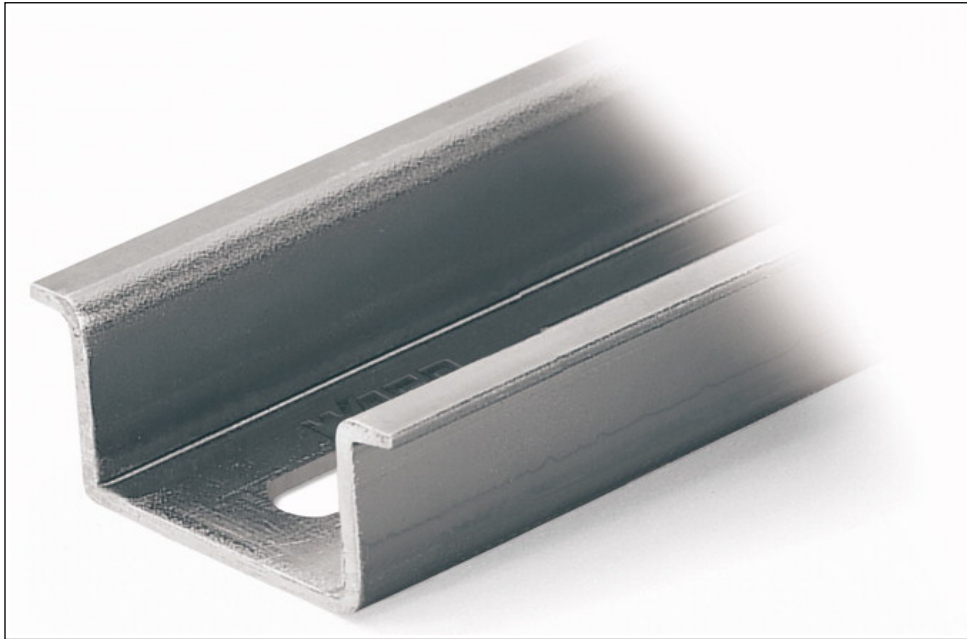
Supplier	WAGO
Item no.	210-197
GTIN / EAN	4017332102759
Content	1
Order amount	1
Customer item number	

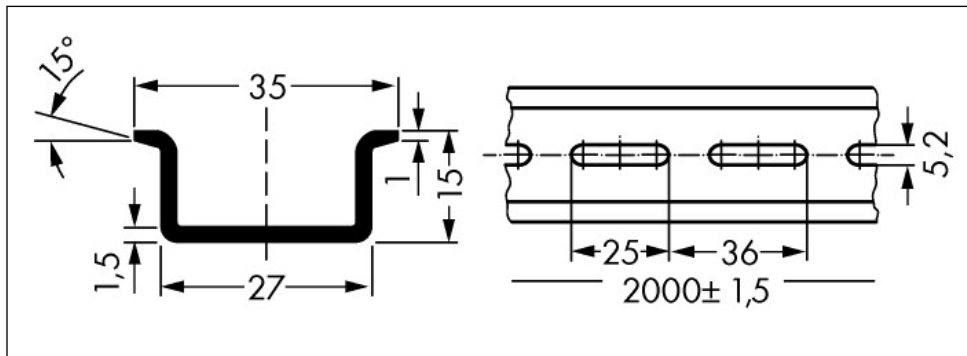
Notes

Technical data

<i>Miscellaneous</i>	
Color	bluish, tinned, chromed, CR3
Weight [g]	1235 [g]
Width	2000 mm / 78.74 in
Height	0.591 mm / 15 in
Length	35 mm / 1.378 in
Type of mounting	DIN 35 rail

Images & drawings





Address

WAGO Kontakttechnik GmbH & Co. KG

Hansastr. 27

32423 Minden

Telefon: 0571/887-0

Fax: 0571/887-169

<http://www.wago.com>

© WAGO Kontakttechnik GmbH & Co. KG

Technische Änderungen und Irrtümer vorbehalten.