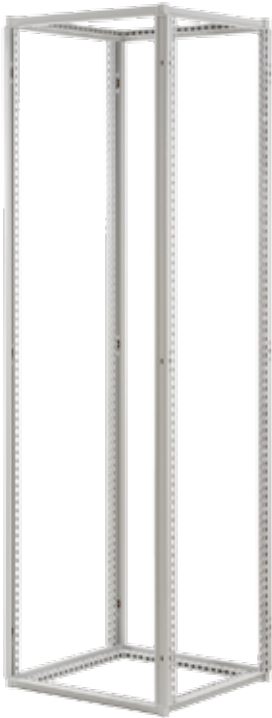


PROLINE G2 FRAMES



APPLICATION

PROLINE G2 frame is the foundational design element that protects the components inside this modular enclosure. The frame was designed to withstand heavier load requirements and to make the modular enclosure easier to use.

FEATURES

- Superior performance under load: 12 gauge (2.5 mm) roll-formed steel frame with welded corners, hybrid frame profile
- Wide range of standard options: 112 frame sizes; EMC protected and disconnect options
- Easy to assemble and use: 25 mm hole pattern on horizontal and vertical frame members, wide door opening, removable rear center post for frames 1200 mm wide or greater

SPECIFICATIONS

- Welded corners with steel corner blocks
- 12 gauge (2.5 mm), roll-formed steel frame sections
- Hybrid frame profile
- Flanges on door and side openings deflect liquids away from the enclosure interior
- Integral frame channels support the full weight of the subpanels
- Frames 1200 mm wide or greater have a removable rear center post, and cross-members in the center top and center bottom; no front center post facilitates component installation
- Accommodates 25 mm DIN standard; rectangular frame holes designed for BV-M6 fastener or metric cage nut fasteners; round frame holes accommodate M5 self-tapping screws and allow numerous grounding locations using M5 thread-forming screws
- Uniform internal frame width to simplify component installation; universal frame member used for both horizontal and vertical frame sections to simplify component installation
- Simple means for joining frames to create multiple-bay enclosures
- Provisions for slide-in subpanel, rack mounting and accessory mounting

FINISH

- Polyester powder paint; RAL 7035 textured light gray standard
- Custom colors available
- EMC-protected frames: plated (not painted) to provide corrosion resistance while maintaining a metal-to-metal contact with the metal fiber gasket used for PROLINE G2 EMC Industrial Packages

LOAD RATING

- 3000 lb (1361kg), safety factor 1.75; frame size: 2000x600x800 mm (load ratings vary by frame size)

ACCESSORIES

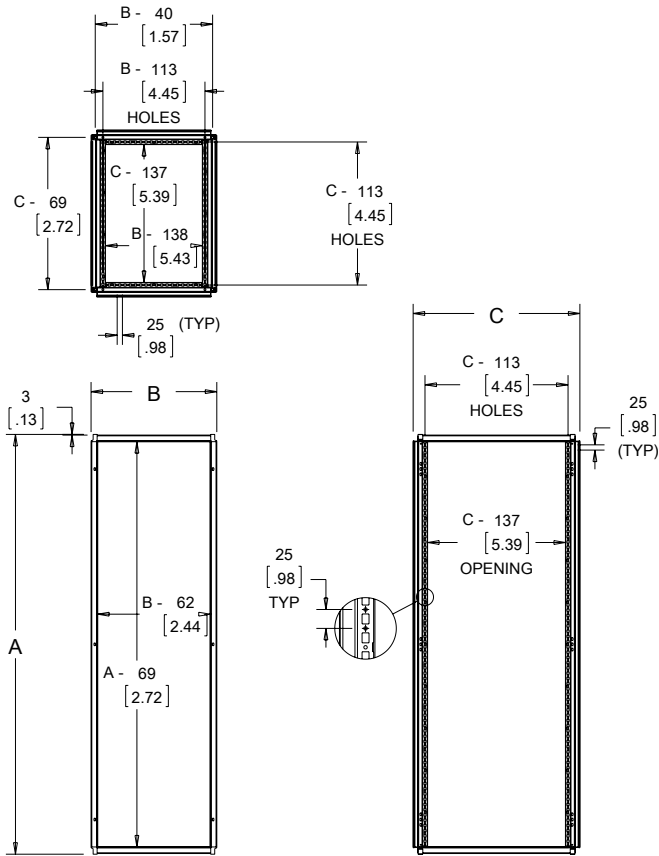
- Frame joining kits (G2-G2 side-to-side, G2-G2 front-to-back, G2-Gen1, G2-R)
- Barrier panel
- BV-M6 fastener package
- T30 Torx screw package
- Panel support brace
- Transformer rail
- Center upright

BULLETIN: P40

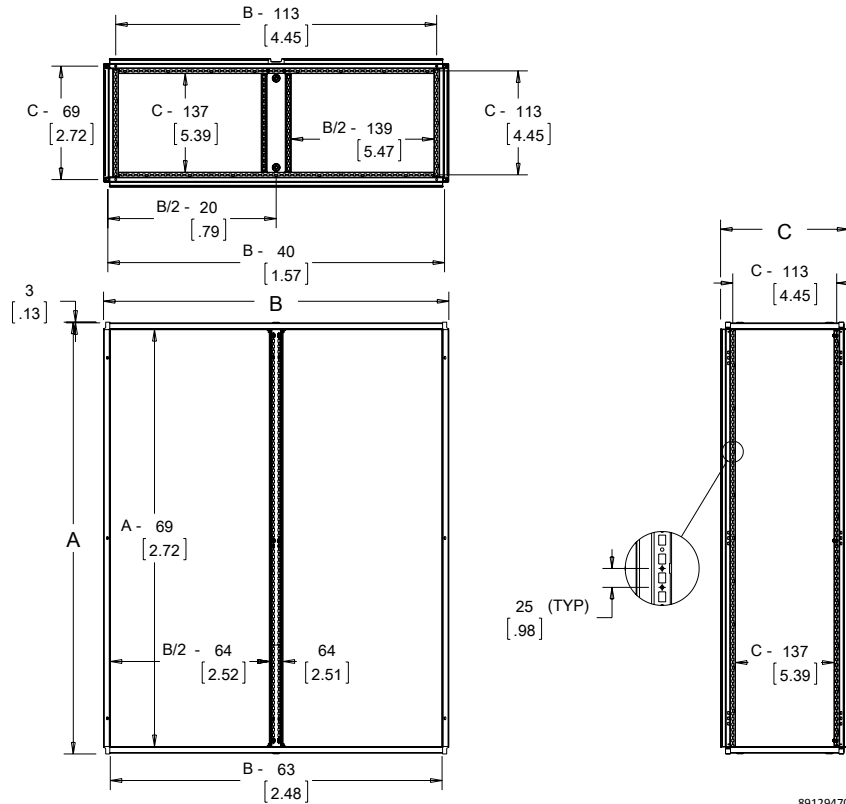
Standard Product

Catalog Number	AxBxC mm	AxBxC in.	Nominal A x B x C	Description
P2F664	599 x 599 x 394	23.59 x 23.57 x 15.52	600 x 600 x 400	Painted
P2F666	599 x 599 x 594	23.59 x 23.57 x 23.39	600 x 600 x 600	Painted
P2F688	599 x 799 x 794	23.59 x 31.45 x 31.26	600 x 800 x 800	Painted
P2F864	799 x 599 x 394	31.46 x 23.57 x 15.52	800 x 600 x 400	Painted
P2F866	799 x 599 x 594	31.46 x 23.57 x 23.39	800 x 600 x 600	Painted
P2F888	799 x 799 x 794	31.46 x 31.45 x 31.26	800 x 800 x 800	Painted
P2F1064	999 x 599 x 394	39.34 x 23.57 x 15.52	1000 x 600 x 400	Painted
P2F1065	999 x 599 x 494	39.34 x 23.57 x 19.45	1000 x 600 x 500	Painted
P2F1066	999 x 599 x 594	39.34 x 23.57 x 23.39	1000 x 600 x 600	Painted
P2F1085	999 x 799 x 494	39.34 x 31.45 x 19.45	1000 x 800 x 500	Painted
P2F1086	999 x 799 x 594	39.34 x 31.45 x 23.39	1000 x 800 x 600	Painted
P2F1088	999 x 799 x 794	39.34 x 31.45 x 31.26	1000 x 800 x 800	Painted
P2F10125	999 x 1199 x 494	39.34 x 47.20 x 19.45	1000 x 1200 x 500	Painted
P2F1264	1199 x 599 x 394	47.21 x 23.57 x 15.52	1200 x 600 x 400	Painted
P2F1265	1199 x 599 x 494	47.21 x 23.57 x 19.45	1200 x 600 x 500	Painted
P2F1266	1199 x 599 x 594	47.21 x 23.57 x 23.39	1200 x 600 x 600	Painted
P2F1285	1199 x 799 x 494	47.21 x 31.45 x 19.45	1200 x 800 x 500	Painted
P2F1286	1199 x 799 x 594	47.21 x 31.45 x 23.39	1200 x 800 x 600	Painted
P2F1288	1199 x 799 x 794	47.21 x 31.45 x 31.26	1200 x 800 x 800	Painted
P2F12125	1199 x 1199 x 494	47.21 x 47.20 x 19.45	1200 x 1200 x 500	Painted
P2F1465	1399 x 599 x 494	55.09 x 23.57 x 19.45	1400 x 600 x 500	Painted
P2F1466	1399 x 599 x 594	55.09 x 23.57 x 23.39	1400 x 600 x 600	Painted
P2F1466HF	1399 x 599 x 594	55.09 x 23.57 x 23.39	1400 x 600 x 600	EMC
P2F1468	1399 x 599 x 794	55.09 x 23.57 x 31.26	1400 x 600 x 800	Painted
P2F1485	1399 x 799 x 494	55.09 x 31.45 x 19.45	1400 x 800 x 500	Painted
P2F1486	1399 x 799 x 594	55.09 x 31.45 x 23.39	1400 x 800 x 600	Painted
P2F1488	1399 x 799 x 794	55.09 x 31.45 x 31.26	1400 x 800 x 800	Painted
P2F14125	1399 x 1199 x 494	55.09 x 47.20 x 19.45	1400 x 1200 x 500	Painted
P2F1664	1599 x 599 x 394	62.96 x 23.57 x 15.52	1600 x 600 x 400	Painted
P2F1665	1599 x 599 x 494	62.96 x 23.57 x 19.45	1600 x 600 x 500	Painted
P2F1666	1599 x 599 x 594	62.96 x 23.57 x 23.39	1600 x 600 x 600	Painted
P2F1668	1599 x 599 x 794	62.96 x 23.57 x 31.26	1600 x 600 x 800	Painted
P2F1684	1599 x 799 x 394	62.96 x 31.45 x 15.52	1600 x 800 x 400	Painted
P2F1685	1599 x 799 x 494	62.96 x 31.45 x 19.45	1600 x 800 x 500	Painted
P2F1686	1599 x 799 x 594	62.96 x 31.45 x 23.39	1600 x 800 x 600	Painted
P2F1688	1599 x 799 x 794	62.96 x 31.45 x 31.26	1600 x 800 x 800	Painted
P2F16104	1599 x 999 x 394	62.96 x 39.32 x 15.52	1600 x 1000 x 400	Painted
P2F16106	1599 x 999 x 594	62.96 x 39.32 x 23.38	1600 x 1000 x 600	Painted
P2F16124	1599 x 1199 x 394	62.96 x 47.20 x 15.52	1600 x 1200 x 400	Painted
P2F16125	1599 x 1199 x 494	62.96 x 47.20 x 19.45	1600 x 1200 x 500	Painted
P2F16126	1599 x 1199 x 594	62.96 x 47.20 x 23.39	1600 x 1200 x 600	Painted
P2F16128	1599 x 1199 x 794	62.96 x 47.20 x 31.26	1600 x 1200 x 800	Painted
P2F16164	1599 x 1599 x 394	62.96 x 62.94 x 15.52	1600 x 1600 x 400	Painted
P2F16165	1599 x 1599 x 494	62.96 x 62.94 x 19.45	1600 x 1600 x 500	Painted
P2F16166	1599 x 1599 x 594	62.96 x 62.94 x 23.39	1600 x 1600 x 600	Painted
P2F16168	1599 x 1599 x 794	62.96 x 62.94 x 31.26	1600 x 1600 x 800	Painted
P2F1845	1799 x 399 x 494	70.83 x 15.70 x 19.45	1800 x 400 x 500	Painted
P2F1846	1799 x 399 x 594	70.83 x 15.70 x 23.39	1800 x 400 x 600	Painted
P2F1864	1799 x 599 x 394	70.83 x 23.57 x 15.52	1800 x 600 x 400	Painted
P2F1865	1799 x 599 x 494	70.83 x 23.57 x 19.45	1800 x 600 x 500	Painted
P2F1866	1799 x 599 x 594	70.83 x 23.57 x 23.39	1800 x 600 x 600	Painted
P2F1866HF	1799 x 599 x 594	70.83 x 23.57 x 23.39	1800 x 600 x 600	EMC
P2F1868	1799 x 599 x 794	70.83 x 23.57 x 31.26	1800 x 600 x 800	Painted
P2F1884	1799 x 799 x 394	70.83 x 31.45 x 15.52	1800 x 800 x 400	Painted
P2F1885	1799 x 799 x 494	70.83 x 31.45 x 19.45	1800 x 800 x 500	Painted
P2F1886	1799 x 799 x 594	70.83 x 31.45 x 23.39	1800 x 800 x 600	Painted
P2F1888	1799 x 799 x 794	70.83 x 31.45 x 31.26	1800 x 800 x 800	Painted
P2F18104	1799 x 999 x 394	70.83 x 39.32 x 15.52	1800 x 1000 x 400	Painted
P2F18105	1799 x 999 x 494	70.83 x 39.32 x 19.45	1800 x 1000 x 500	Painted
P2F18106	1799 x 999 x 594	70.83 x 39.32 x 23.39	1800 x 1000 x 600	Painted
P2F18106HF	1799 x 999 x 594	70.83 x 39.32 x 23.39	1800 x 1000 x 600	EMC
P2F18108	1799 x 999 x 794	70.83 x 39.32 x 31.26	1800 x 1000 x 800	Painted
P2F18124	1799 x 1199 x 394	70.83 x 47.20 x 15.52	1800 x 1200 x 400	Painted
P2F18125	1799 x 1199 x 494	70.83 x 47.20 x 19.45	1800 x 1200 x 500	Painted
P2F18126	1799 x 1199 x 594	70.83 x 47.20 x 23.39	1800 x 1200 x 600	Painted
P2F18128	1799 x 1199 x 794	70.83 x 47.20 x 31.26	1800 x 1200 x 800	Painted
P2F18164	1799 x 1599 x 394	70.83 x 62.94 x 15.52	1800 x 1600 x 400	Painted
P2F18165	1799 x 1599 x 494	70.83 x 62.94 x 19.45	1800 x 1600 x 500	Painted
P2F18166	1799 x 1599 x 594	70.83 x 62.94 x 23.39	1800 x 1600 x 600	Painted
P2F18168	1799 x 1599 x 794	70.83 x 62.94 x 31.26	1800 x 1600 x 800	Painted
P2F18185	1799 x 1799 x 494	70.83 x 70.82 x 19.45	1800 x 1800 x 500	Painted
P2F18186	1799 x 1799 x 594	70.83 x 70.82 x 23.39	1800 x 1800 x 600	Painted
P2F18188	1799 x 1799 x 794	70.83 x 70.82 x 31.26	1800 x 1800 x 800	Painted
P2F2045	1999 x 399 x 494	78.71 x 15.70 x 19.45	2000 x 400 x 500	Painted
P2F2046	1999 x 399 x 594	78.71 x 15.70 x 23.39	2000 x 400 x 600	Painted
P2F2064	1999 x 599 x 394	78.71 x 23.57 x 15.52	2000 x 600 x 400	Painted
P2F2065	1999 x 599 x 494	78.71 x 23.57 x 19.45	2000 x 600 x 500	Painted

Catalog Number	AxBxC mm	AxBxC in.	Nominal A x B x C	Description
P2F2066	1999 x 599 x 594	78.71 x 23.57 x 23.39	2000 x 600 x 600	Painted
P2F2066HF	1999 x 599 x 594	78.71 x 23.57 x 23.39	2000 x 600 x 600	EMC
P2F2068	1999 x 599 x 794	78.71 x 23.57 x 31.26	2000 x 600 x 800	Painted
P2F2084	1999 x 799 x 394	78.71 x 31.45 x 15.52	2000 x 800 x 400	Painted
P2F2085	1999 x 799 x 494	78.71 x 31.45 x 19.45	2000 x 800 x 500	Painted
P2F2086	1999 x 799 x 594	78.71 x 31.45 x 23.39	2000 x 800 x 600	Painted
P2F2086HF	1999 x 799 x 594	78.71 x 31.45 x 23.39	2000 x 800 x 600	EMC
P2F2088	1999 x 799 x 794	78.71 x 31.45 x 31.26	2000 x 800 x 800	Painted
P2F20810	1999 x 799 x 994	78.71 x 31.45 x 39.14	2000 x 800 x 1000	Painted
P2F20105	1999 x 999 x 494	78.71 x 39.32 x 19.45	2000 x 1000 x 500	Painted
P2F20106	1999 x 999 x 594	78.71 x 39.32 x 23.39	2000 x 1000 x 600	Painted
P2F20108	1999 x 999 x 794	78.71 x 39.32 x 31.26	2000 x 1000 x 800	Painted
P2F20124	1999 x 1199 x 394	78.71 x 47.20 x 15.52	2000 x 1200 x 400	Painted
P2F20125	1999 x 1199 x 494	78.71 x 47.20 x 19.45	2000 x 1200 x 500	Painted
P2F20126	1999 x 1199 x 594	78.71 x 47.20 x 23.39	2000 x 1200 x 600	Painted
P2F20128	1999 x 1199 x 794	78.71 x 47.20 x 31.26	2000 x 1200 x 800	Painted
P2F20165	1999 x 1599 x 494	78.71 x 62.94 x 19.45	2000 x 1600 x 500	Painted
P2F20166	1999 x 1599 x 594	78.71 x 62.94 x 23.39	2000 x 1600 x 600	Painted
P2F20168	1999 x 1599 x 794	78.71 x 62.94 x 31.26	2000 x 1600 x 800	Painted
P2F20185	1999 x 1799 x 494	78.71 x 70.82 x 19.45	2000 x 1800 x 500	Painted
P2F20186	1999 x 1799 x 594	78.71 x 70.82 x 23.39	2000 x 1800 x 600	Painted
P2F20188	1999 x 1799 x 794	78.71 x 70.82 x 31.26	2000 x 1800 x 800	Painted
P2F2265	2199 x 599 x 494	86.58 x 23.57 x 19.45	2200 x 600 x 500	Painted
P2F2266	2199 x 599 x 594	86.58 x 23.57 x 23.39	2200 x 600 x 600	Painted
P2F2266HF	2199 x 599 x 594	86.58 x 23.57 x 23.39	2200 x 600 x 600	EMC
P2F2268	2199 x 599 x 794	86.58 x 23.57 x 31.26	2200 x 600 x 800	Painted
P2F2285	2199 x 799 x 494	86.58 x 31.45 x 19.45	2200 x 800 x 500	Painted
P2F2286	2199 x 799 x 594	86.58 x 31.45 x 23.39	2200 x 800 x 600	Painted
P2F2286HF	2199 x 799 x 594	86.58 x 31.45 x 23.39	2200 x 800 x 600	EMC
P2F2288	2199 x 799 x 794	86.58 x 31.45 x 31.26	2200 x 800 x 800	Painted
P2F22810	2199 x 799 x 994	86.58 x 31.45 x 39.14	2200 x 800 x 1000	Painted
P2F22105	2199 x 999 x 494	86.58 x 39.32 x 19.45	2200 x 1000 x 500	Painted
P2F22106	2199 x 999 x 594	86.58 x 39.32 x 23.39	2200 x 1000 x 600	Painted
P2F22108	2199 x 999 x 794	86.58 x 39.32 x 31.26	2200 x 1000 x 800	Painted
P2F22125	2199 x 1199 x 494	86.58 x 47.20 x 19.45	2200 x 1200 x 500	Painted
P2F22126	2199 x 1199 x 594	86.58 x 47.20 x 23.39	2200 x 1200 x 600	Painted
P2F22128	2199 x 1199 x 794	86.58 x 47.20 x 31.26	2200 x 1200 x 800	Painted
P2F22165	2199 x 1599 x 494	86.58 x 62.94 x 19.45	2200 x 1600 x 500	Painted
P2F22166	2199 x 1599 x 594	86.58 x 62.94 x 23.39	2200 x 1600 x 600	Painted
P2F22168	2199 x 1599 x 794	86.58 x 62.94 x 31.26	2200 x 1600 x 800	Painted
P2F22185	2199 x 1799 x 494	86.58 x 70.82 x 19.45	2200 x 1800 x 500	Painted
P2F22186	2199 x 1799 x 594	86.58 x 70.82 x 23.39	2200 x 1800 x 600	Painted
P2F22188	2199 x 1799 x 794	86.58 x 70.82 x 31.26	2200 x 1800 x 800	Painted



89129469



89129470

Model	Component	Type	Height	Width	Depth	Specialty	Catalog Number
P2	F	Blank	20	8	6	Blank	= P2F2086
PROLINE G2	Frame	Blank = standard bay D = disconnect	mm 22 = 2200 20 = 2000 18 = 1800 16 = 1600 14 = 1400 12 = 1200 10 = 1000 8 = 800 6 = 600	mm 18 = 1800 16 = 1600 14 = 1400 12 = 1200 10 = 1000 8 = 800 6 = 600 4 = 400	mm 10 = 1000 8 = 800 6 = 600 5 = 500 4 = 400	Blank = standard HF = EMC protected	

Frame Size Matrix

Nominal Height (mm)	Nominal Width (mm)	Nominal Depth (mm)*
600	600, 800	400, 600, 800
800	600, 800	400, 600, 800
1000	600, 800, 1200	400, 500, 600, 800
1200	600, 800, 1200	400, 500, 600, 800
1400	600, 800, 1200	500, 600, 800
1600	600, 800, 1200	500, 600, 800
1800	600, 800, 1200, 1600	400, 500, 600, 800
2000	400, 600, 800, 1000, 1200, 1600, 1800	400, 500, 600, 800, 1000
2200	400, 600, 800, 1000, 1200, 1600, 1800	400, 500, 600, 800, 1000

* Not every depth is available for each width

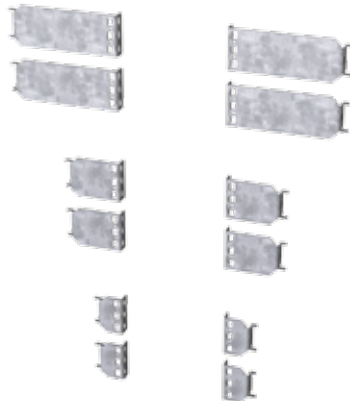
Custom sizes available upon request

Door Selection Matrix

Nominal Width (mm)	1 Door*	2 Door**
600	X	
800	X	X
1000	X	X
1200 or greater		X

* Reversible hinging

** Overlapping double door; reversible hinging

PROLINE G2 FRAME-REDUCING BRACKETS


Frame-Reducing Brackets are used to reduce wider frames to 600mm, allowing 19-in. rack angles to fit.

Specifications:

- Can be used to left- or right-justify the rack-mounted equipment
- Furnished in sets of four
- 14 gauge (1.75 mm) steel
- Mounting hardware is included

Finish: Plated

BULLETIN: P40

Standard Product

Catalog Number	Fits Frame Width
P2AFRB8	800
P2FRB10	1000

Frame width dimensions are nominal mm.

PROLINE G2 FRAME ACCESSORY BRACKETS



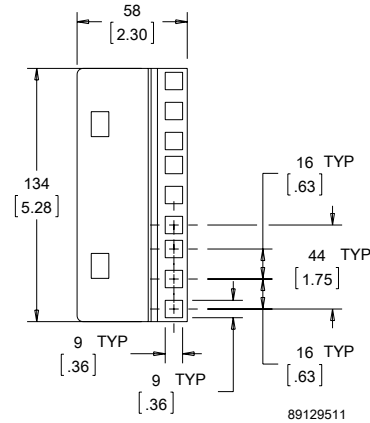
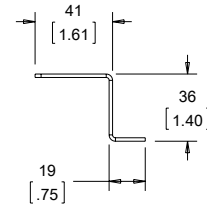
Frame Accessory Brackets mount directly to the PROLINE G2 frame and are used in place of rack angles to mount rack accessories such as shelves and pull-out shelves.

Specifications:

- Furnished in sets of four
- 14 gauge (1.75 mm) steel
- Mounting hardware is included

Finish: Plated

BULLETIN: P40



Standard Product

Catalog Number	Description
P2AFB19	Frame Accessory Bracket, 19in.

GROUNDING BAR SYSTEM



INDUSTRY STANDARDS

UL Component Recognized; File No. E61997

Three sizes of grounding bars and insulated mounting brackets are available. Bars are plated copper with M6 and M5 tapped holes to provide a common point for grounding equipment. Fits all enclosures if mounted vertically. See table for horizontal mounting.

BULLETIN: P20

Catalog Number	Description	Length mm/in.	Number of Holes and Screws M6	Number of Holes and Screws M5
PGS2K	Fits 400-mm deep frame front to back horizontally	200 / 7.87	3/5	10/10
PGS4K	Fits 600-mm deep frame front to back horizontally	400 / 15.75	9/11	20/20
PGS6K	Fits 800-mm deep frame front to back horizontally	600 / 23.62	15/17	30/31