

IEC Appliance Inlet C14 with Fuseholder 1- or 2-pole



Screw-On Version



Snap-In Version



Pick & Place Version



Description

- Panel Mount:
Sandwich/rear-side
- 2 Functions:
Appliance Inlet Protection class I, with or without Fuseholder for fuse-links 5 x 20 mm on the rear-side 1- or 2-pole
- For PCB mounting
- Pick and place version

Approvals

- VDE Certificate Number: 40024857
- UL File Number: E93617, E96454
- CSA File Number: 38456
- CCC File Number: 2006010204183182

Characteristics

- PCB mount with snap-in or screw-on feet
Suitable for automatic PCB assembling
- All single elements are already wired
- Fuseholder on the inside of the equipment prevents accidental use of incorrect fuse-links by the user
- With or without rear-side insulation cover
- Blister tray as optional packaging variant
- Suitable for use in equipment according to IEC/UL 60950

Other versions on request

- Ground terminal with quick-connect terminal 6,3 x 0,8 mm
- Ground terminal with solder terminal
- For protection class II

Weblinks

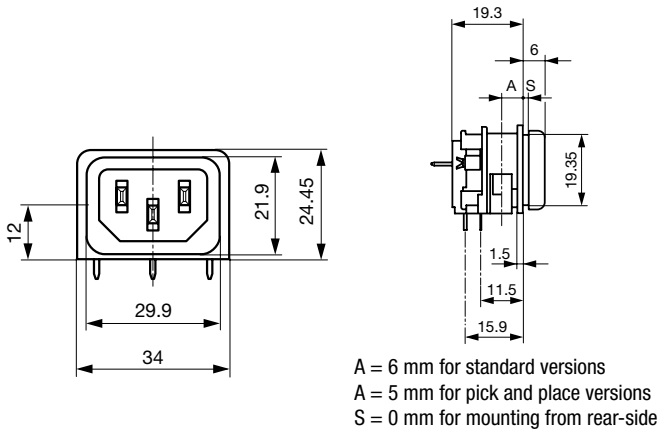
[pdf-datasheet](#), [html-datasheet](#), [General Product Information](#), [Approvals](#), [CE declaration of conformity](#), [RoHS](#), [CHINA-RoHS](#), [REACH](#), [Mating Connectors](#), [e-Shop](#), [SCHURTER-Stock-Check](#), [Distributor-Stock-Check](#), [CAD-Drawings](#), [Accessories](#), [Detailed request for product](#)

Newly available variants corresponding to V-Lock mating cordset. The connector is equipped with a notch intended for use with the latching cordset. The cord latching system prevents against accidental removal of the cordset.

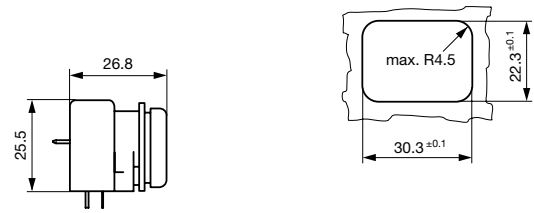
Technical Data

| | | | |
|---------------------------|---|-----------------------------------|--|
| Ratings IEC | 10A / 250VAC; 50Hz | Appliance Inlet | C14 acc. to IEC 60320, UL 498, CSA C22.2 no. 42 (for cold conditions) pin-temperature 70 °C, 10A, Protection Class I |
| Ratings UL/CSA | 10A / 250VAC; 60Hz without fuseholder 16A (UL) | Fuseholder | optional, 1 or 2 pole, Shocksafe category PC2 acc. to IEC 60127-6, for fuse-links 5 x 20mm |
| Dielectric Strength | > 3kVAC between L-N > 4kVAC between L/N-PE (1 min/50Hz) | Rated Power Acceptance @ Ta 23 °C | 5 x 20: 3.15W (1 pole)/ 2.5W (2-pole) per pole |
| Allowable Operation Temp. | -25 °C to 70 °C | Power Acceptance @ Ta > 23°C | Admissible power acceptance at higher ambient temperature see derating curves |
| Degree of Protection | from front side IP 40 acc. to IEC 60529 | | |
| Protection Class | Suitable for appliances with protection class I acc. to IEC 61140 | | |
| Terminal | For PCB mounting | | |
| Panel Thickness s | Snap-in: 1.5/2/2.5/3 mm | | |
| Material: Housing | Thermoplastic, black, UL 94V-0 | | |

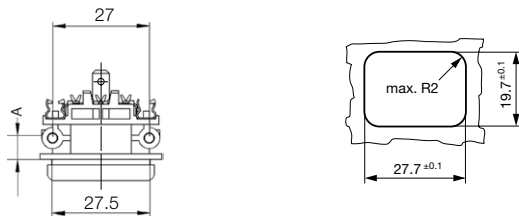
Dimensions



with insulation cover



for mounting from rear-side

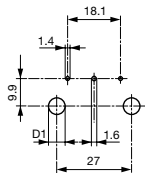


A = 6 mm for standard versions
A = 5 mm for pick and place versions

for sandwich mounting

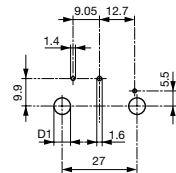
Drilling diagrams

without fuseholder



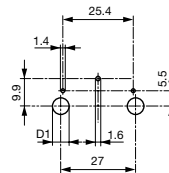
D1 for snap-in mounting = 6 ± 0.05
D1 for self-tapping screw = 3.6 ± 0.1

with 1-pole fuseholder



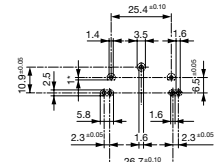
D1 for snap-in mounting = 6 ± 0.05
D1 for self-tapping screw = 3.6 ± 0.1

with 2-pole fuseholder



D1 for snap-in mounting = 6 ± 0.05
D1 for self-tapping screw = 3.6 ± 0.1

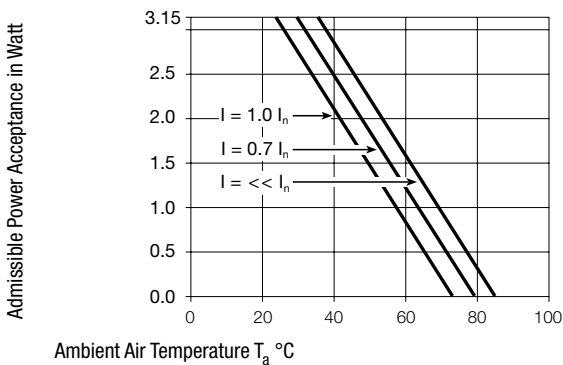
Pick and Place versions
without / with 1-pole or
2-pole fuseholder



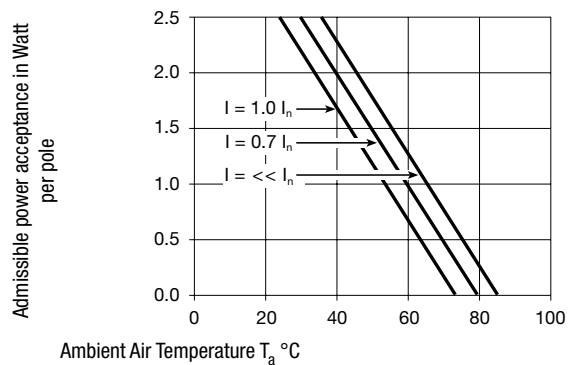
1* only for protection class II

Derating Curves

1-pole



2-pole



All Variants

| Mounting side | Panel mounting | Panel Thickness s [mm] | Fuseholder | Ground terminal 4.8 x 0.8 mm | Ground terminal direction | Packaging | Order Number |
|---------------|----------------|---------------------------|------------|---------------------------------|---------------------------|-----------|--------------|
| Sandwich | Snap-in | 1.5 | - | ● | angled to pin axis | - | GSF1.0202.31 |
| Sandwich | Snap-in | 1.5 | - | ● | straight | - | GSF1.0201.31 |
| Sandwich | Snap-in | 2 | - | ● | angled to pin axis | - | GSF1.0202.41 |
| Sandwich | Snap-in | 2 | - | ● | straight | - | GSF1.0201.41 |
| Sandwich | Snap-in | 2.5 | - | ● | angled to pin axis | - | GSF1.0202.51 |
| Sandwich | Snap-in | 2.5 | - | ● | straight | - | GSF1.0201.51 |
| Sandwich | Snap-in | 3 | - | ● | angled to pin axis | - | GSF1.0202.61 |
| Sandwich | Snap-in | 3 | - | ● | straight | - | GSF1.0201.61 |
| Sandwich | Snap-in | 1.5 | 1-pole | ● | angled to pin axis | - | GSF1.1202.31 |
| Sandwich | Snap-in | 1.5 | 1-pole | ● | straight | - | GSF1.1201.31 |
| Sandwich | Snap-in | 2 | 1-pole | ● | angled to pin axis | - | GSF1.1202.41 |
| Sandwich | Snap-in | 2 | 1-pole | ● | straight | - | GSF1.1201.41 |
| Sandwich | Snap-in | 2.5 | 1-pole | ● | angled to pin axis | - | GSF1.1202.51 |
| Sandwich | Snap-in | 2.5 | 1-pole | ● | straight | - | GSF1.1201.51 |
| Sandwich | Snap-in | 3 | 1-pole | ● | angled to pin axis | - | GSF1.1202.61 |
| Sandwich | Snap-in | 3 | 1-pole | ● | straight | - | GSF1.1201.61 |
| Sandwich | Snap-in | 1.5 | 2-pole | ● | angled to pin axis | - | GSF1.2202.31 |
| Sandwich | Snap-in | 1.5 | 2-pole | ● | straight | - | GSF1.2201.31 |
| Sandwich | Snap-in | 2 | 2-pole | ● | angled to pin axis | - | GSF1.2202.41 |
| Sandwich | Snap-in | 2 | 2-pole | ● | straight | - | GSF1.2201.41 |
| Sandwich | Snap-in | 2.5 | 2-pole | ● | angled to pin axis | - | GSF1.2202.51 |
| Sandwich | Snap-in | 2.5 | 2-pole | ● | straight | - | GSF1.2201.51 |
| Sandwich | Snap-in | 3 | 2-pole | ● | straight | - | GSF1.2201.61 |
| Sandwich | Screw | 1.5 | - | ● | angled to pin axis | - | GSF1.0002.31 |
| Sandwich | Screw | 1.5 | - | ● | straight | - | GSF1.0001.31 |
| Sandwich | Screw | 2 | - | ● | angled to pin axis | - | GSF1.0002.41 |
| Sandwich | Screw | 2 | - | ● | straight | - | GSF1.0001.41 |
| Sandwich | Screw | 2.5 | - | ● | angled to pin axis | - | GSF1.0002.51 |
| Sandwich | Screw | 2.5 | - | ● | straight | - | GSF1.0001.51 |
| Sandwich | Screw | 3 | - | ● | angled to pin axis | - | GSF1.0002.61 |
| Sandwich | Screw | 3 | - | ● | straight | - | GSF1.0001.61 |
| Sandwich | Screw | 1.5 | 1-pole | ● | angled to pin axis | - | GSF1.1002.31 |
| Sandwich | Screw | 1.5 | 1-pole | ● | straight | - | GSF1.1001.31 |
| Sandwich | Screw | 2 | 1-pole | ● | angled to pin axis | - | GSF1.1002.41 |
| Sandwich | Screw | 2 | 1-pole | ● | straight | - | GSF1.1001.41 |
| Sandwich | Screw | 2.5 | 1-pole | ● | angled to pin axis | - | GSF1.1002.51 |
| Sandwich | Screw | 2.5 | 1-pole | ● | straight | - | GSF1.1001.51 |
| Sandwich | Screw | 3 | 1-pole | ● | angled to pin axis | - | GSF1.1002.61 |
| Sandwich | Screw | 3 | 1-pole | ● | straight | - | GSF1.1001.61 |
| Sandwich | Screw | 1.5 | 2-pole | ● | angled to pin axis | - | GSF1.2002.31 |
| Sandwich | Screw | 1.5 | 2-pole | ● | straight | - | GSF1.2001.31 |
| Sandwich | Screw | 2 | 2-pole | ● | angled to pin axis | - | GSF1.2002.41 |
| Sandwich | Screw | 2 | 2-pole | ● | straight | - | GSF1.2001.41 |
| Sandwich | Screw | 2.5 | 2-pole | ● | angled to pin axis | - | GSF1.2002.51 |
| Sandwich | Screw | 2.5 | 2-pole | ● | straight | - | GSF1.2001.51 |
| Sandwich | Screw | 3 | 2-pole | ● | angled to pin axis | - | GSF1.2002.61 |
| Sandwich | Screw | 3 | 2-pole | ● | straight | - | GSF1.2001.61 |
| Rear Side | Snap-in | 6 | - | ● | angled to pin axis | - | GSF1.0202.01 |
| Rear Side | Snap-in | 6 | - | ● | straight | - | GSF1.0201.01 |
| Rear Side | Snap-in | 6 | 1-pole | ● | angled to pin axis | - | GSF1.1202.01 |
| Rear Side | Snap-in | 6 | 1-pole | ● | straight | - | GSF1.1201.01 |
| Rear Side | Snap-in | 6 | 2-pole | ● | angled to pin axis | - | GSF1.2202.01 |
| Rear Side | Snap-in | 6 | 2-pole | ● | straight | - | GSF1.2201.01 |
| Rear Side | Screw | 6 | - | ● | angled to pin axis | - | GSF1.0002.01 |
| Rear Side | Screw | 6 | - | ● | straight | - | GSF1.0001.01 |

| Mounting side | Panel mounting | Panel Thickness s [mm] | Fuseholder | Ground terminal 4.8 x 0.8 mm | Ground terminal direction | Packaging | Order Number |
|---------------|----------------|------------------------|------------|------------------------------|---------------------------|--------------|--------------|
| Rear Side | Screw | 6 | 1-pole | ● | angled to pin axis | - | GSF1.1002.01 |
| Rear Side | Screw | 6 | 1-pole | ● | straight | - | GSF1.1001.01 |
| Rear Side | Screw | 6 | 2-pole | ● | angled to pin axis | - | GSF1.2002.01 |
| Rear Side | Screw | 6 | 2-pole | ● | straight | - | GSF1.2001.01 |
| Rear Side | Metal snaps | 6 | - | ● | angled to pin axis | Blister tray | GSF1.3402.01 |
| Rear Side | Metal snaps | 6 | 1-pole | ● | angled to pin axis | Blister tray | GSF1.4402.01 |
| Rear Side | Metal snaps | 6 | 2-pole | ● | angled to pin axis | Blister tray | GSF1.5402.01 |

Most Popular.

Availability for all products can be searched real-time:<http://www.schurter.com/en/Stock-Check/Stock-Check-SCHURTER>

Insulation cover must be ordered separately. Order No. 0098.0078

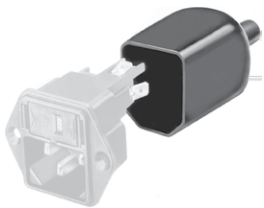
Suffix ".21" corresponds to the version with V-Lock mating cordset. The connector is equipped with a notch intended for use with the latching cordset. The cord latching system prevents against accidental removal of the cordset.

Optional blister tray packaging 250 Pcs

Packaging unit 50 Pcs

Accessories

Description



Assorted Covers
Rear Cover

0098.0078

Mating Outlets/Connectors

Category / Description

Appliance Outlet Overview complete



| | |
|---|------|
| IEC Appliance Outlet F, Screw-on Mounting, Front Side, Solder Terminal | 4787 |
| IEC Appliance Outlet F, Snap-in Mounting, Front Side, Solder or Quick-connect Terminal | 4788 |
| IEC Appliance Outlet F or H, Screw-on Mounting, Front Side, Solder, PCB or Quick-connect Terminal | 5091 |

Appliance Outlet further types to GSF1

Connector Overview complete



| | |
|--|---------|
| 4782 Mounting: Power Cord, 3 x 1 mm ² / 3 x 18 AWG, Cable, Connector: IEC C13 | 4782 |
| 4022 Mounting: Power Supply Cord, 3 x 1.5 mm ² , Screw clamps, Connector: IEC C13 | 4022 |
| 4785 Mounting: Power Cord, 3 x 1 mm ² / 3 x 18 AWG, Cable, Connector: IEC C13 | 4785 |
| 4300-06 Mounting: Power Cord, 3 x 1 mm ² / 3 x 18 AWG, Cable, Connector: IEC C13 | 4300-06 |
| 4012 Mounting: Power Supply Cord, 3 x 1.5 mm ² , Screw clamps, Connector: IEC C13 | 4012 |

Connector further types to GSF1

...

Mating Outlets/Connectors shuttered

[Power Cord Overview complete](#)



| | |
|---|-----------|
| VAC17KS, North America, 2.0 m, Connector C17, cord end: | 6051.2801 |
| VAC17KS, Europlug, 2.0 m, Connector IEC C17, cord end: | 6051.2803 |
| VAC17KS, Europlug, 2.0 m, Connector IEC C17, cord end: | 6051.2813 |
| VAC13KS, Overview, diverse Connector IEC C13, cord end: | VAC13KS |

[Power Cord further types to GSF1](#)