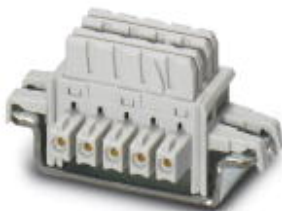



# DIN rail connector - ME 6,2 TBUS-2 1,5/5-ST-3,81KMG - 2969401

Please be informed that the data shown in this PDF Document is generated from our Online Catalog. Please find the complete data in the user's documentation. Our General Terms of Use for Downloads are valid (<http://phoenixcontact.com/download>)

DIN rail bus connector for potential bridging of devices arranged next to one another across all modules.



## Key Commercial Data

Packing unit	10 pc
Minimum order quantity	10 pc
GTIN	 4 017918 975210
Weight per Piece (excluding packing)	4.56 g
Custom tariff number	85366990
Country of origin	Germany

## Technical data

### General

Rated voltage (III/3)	125 V
Nominal current I <sub>N</sub>	8 A

### Standards and Regulations

Connection in acc. with standard	CUL
----------------------------------	-----

## Classifications

### eCl@ss

eCl@ss 4.0	27180401
eCl@ss 4.1	27180401
eCl@ss 5.0	27180506
eCl@ss 5.1	27180506
eCl@ss 6.0	27260704
eCl@ss 7.0	27440402

# DIN rail connector - ME 6,2 TBUS-2 1,5/5-ST-3,81KMG - 2969401

## Classifications

### eCl@ss

eCl@ss 8.0	27182702
eCl@ss 9.0	27182702

### ETIM

ETIM 2.0	EC001031
ETIM 3.0	EC001031
ETIM 4.0	EC002638
ETIM 5.0	EC001031

### UNSPSC

UNSPSC 6.01	31261501
UNSPSC 7.0901	31261501
UNSPSC 11	31261501
UNSPSC 12.01	31261501
UNSPSC 13.2	31261501

## Approvals

### Approvals

---

#### Approvals

UL Recognized / cUL Recognized / EAC / cULus Recognized

---

#### Ex Approvals

---

#### Approvals submitted

---

## Approval details

UL Recognized		
	B	D
Nominal current I <sub>N</sub>	8 A	8 A
Nominal voltage U <sub>N</sub>	150 V	150 V

# DIN rail connector - ME 6,2 TBUS-2 1,5/5-ST-3,81KMG - 2969401

## Approvals

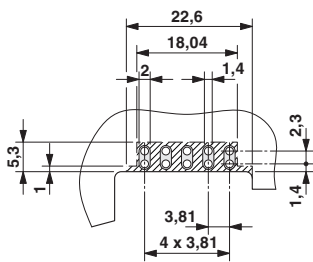
cUL Recognized		
	B	D
Nominal current I <sub>N</sub>	8 A	8 A
Nominal voltage U <sub>N</sub>	150 V	150 V

EAC
-----

cULus Recognized
------------------

## Drawings

Dimensional drawing



Dimensional drawing

