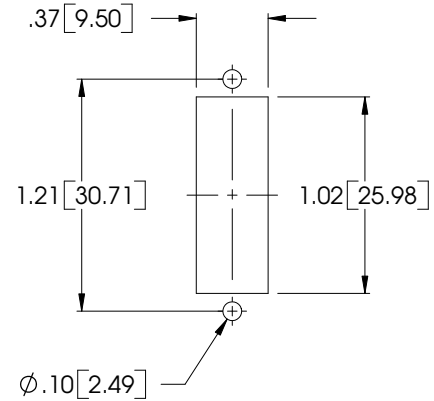
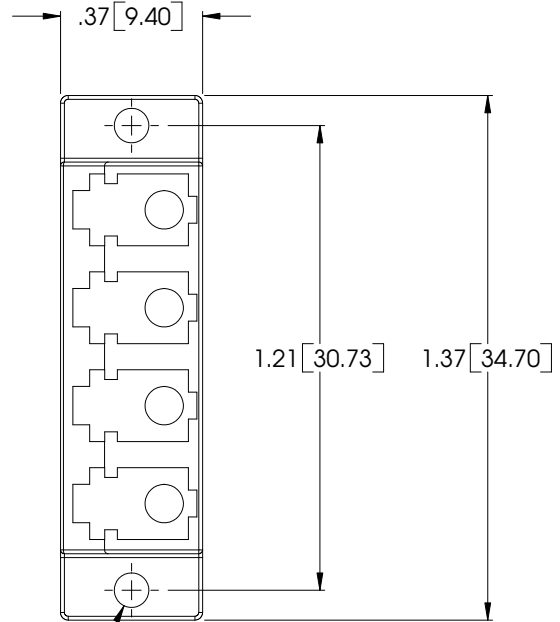
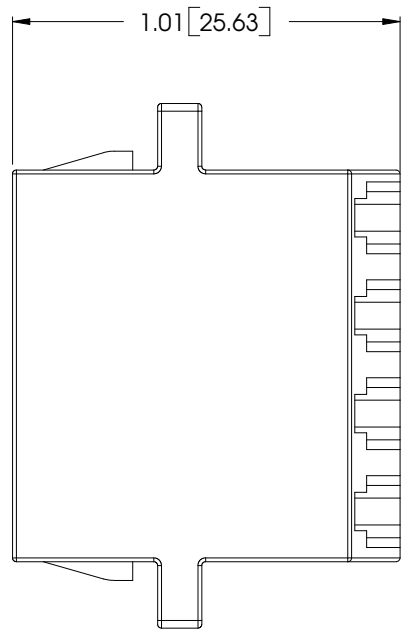
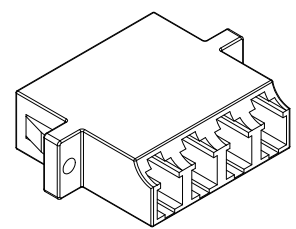


THE INFORMATION CONTAINED IN THIS DRAWING IS THE SOLE PROPERTY OF L-COM, INC. ANY REPRODUCTION IN PART OR WHOLE WITHOUT THE WRITTEN PERMISSION OF L-COM, INC. IS PROHIBITED.

REVISIONS			
REV	DESCRIPTION	DATE	APPROVED
A	INITIAL RELEASE	10/17/06	MCCORMICK



2X $\phi .09 [2.29]$ THRU



OUTLINE DRAWING

NOTES:

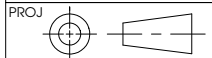
MATERIAL:
 HOUSING: PEI (POLYETHERIMIDE)
 SPLIT SLEEVE: SEE TABLE
 DUST CAPS (NOT SHOWN): POLYPROPYLENE

SPECIFICATIONS:
 MEETS GR-326-CORE, EIA/TIA568A
 INSERTION LOSS: 0.3 dB
 OPERATING TEMPERATURE: -40°C TO +85°C
 MATINGS: 500+
 FLAMMABILITY: RATED UL94 V-0

MISCELLANEOUS:
 COUPLERS SHALL BE INDIVIDUALLY PACKAGED IN POLY BAG
 RECOMMENDED PANEL THICKNESS: .067(1.70)
 PARTS SHALL BE ROHS COMPLIANT.

MODEL #	SPLIT SLEEVE MATERIAL	FIBER TYPE
FOA-560	BRONZE	MULTIMODE
FOA-570	ZIRCONIA	SINGLEMODE

DIMENSIONS ARE IN INCHES (mm)
 UNLESS OTHERWISE SPECIFIED,
 TOLERANCES TO BE:
 .X ±.1 (2.5) ANGLES ±2°
 .XX ±.05 (1.3)
 .XXX ±.005 (.13)
 OVERALL CABLE LENGTH TOL:
 ≤ 60 (1524) +3 (76.2) / - 0
 > 60 (1524) +5% / -0%



APPROVALS	DATE
DRAWN BY C.MCCORMICK	10/17/2006
CHECKED BY R.EVANS	10/17/2006
APPROVED BY J.ROBERTS	10/17/2006

CONFIGURATION DETAILS OF UNDIMENSIONED FEATURES MAY VARY

	45 BEECHWOOD DRIVE NORTH ANDOVER, MA 01845	
	CATEGORY FIBER OPTICS	
PRODUCT DESCRIPTION LC QUAD ADAPTER		
SIZE A	FSCM NO. 43321	DWG. NO. FOA-560
SCALE: NONE CAD FILE: FOA-560.SLDDRW		REV. A
SHEET 1 OF 1		