

User Registration

Register today to create your account on Silabs.com. Your personalized profile allows you to receive technical document updates, new product announcements, “how-to” and design documents, product change notices (PCN) and other valuable content available only to registered users. <http://www.silabs.com/profile>

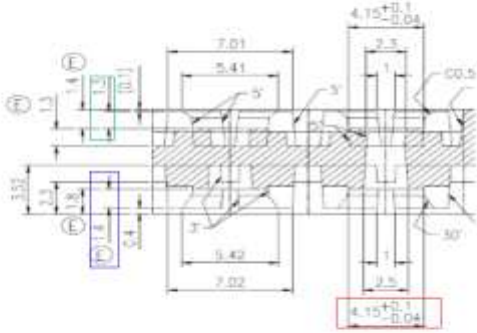
Bulletin Date: 12/24/2014		Bulletin Effective Date: 12/24/2014	
Title: SPIL_QFN-4x4_Tray change			
Originator: Paranidharan Rengarajan		Phone: +65 6511 7735	Dept: Supplier Management
Customer Contact: Kathy Haggar		Phone: (512) 532-5261	Dept: Sales
Bulletin Details			
Description: Silicon Labs is pleased to announce a change is being made to the shipment media for Si53xx QFN-4x4 devices. Per the effective date of this PCN, there will be a change in tray supplier from Sunrise QJ-012 to Hwa Shu EAM040411. The tray dimensions for the current and new tray are identical, except the new tray’s cavity design and wall size have been optimized to prevent unit tilt and unit misplacement issues. Please refer to “Appendix A” for the comparison details between Sunrise QJ-012 & Hwa Shu EAM040411 trays. Refer to “Appendix B” for the tray drawings of both Sunrise QJ-012 & Hwa Shu EAM040411 trays.			
Reason: This change is being made to improve quality and operational efficiency.			
Product Identification: Refer to “Appendix C” for details.			
This is a minor change which does not affect form, fit, function, quality, or reliability. This information is being provided as a customer courtesy. Please contact your local Silicon Labs sales representative with any questions about this notification. A list of Silicon Labs sales representatives may be found at www.silabs.com			
Customer Actions Needed: None			

Appendix A

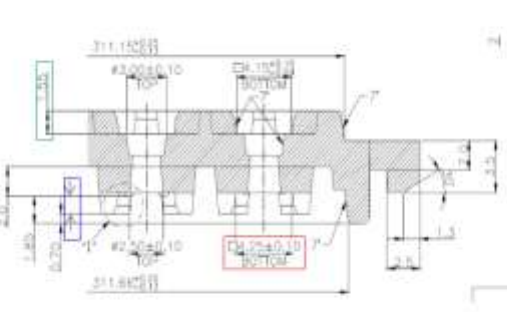
Comparison between Sunrise and Hwa Shu tray:

Sunrise and Hwa Shu tray cavity dimension compare

Old tray
(Sunrise Tray drawin:QJ-012)








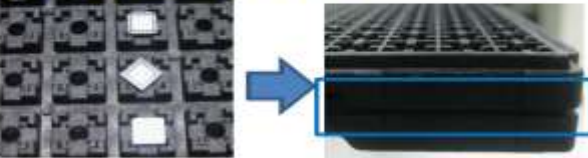
New tray
(HS Tray drawing:EAM040411)



Remark : The color circle mean the tray key difference.

1. **Red**: IC sitting at IC cavity size
2. **Green**: tray top IC cavity wall size
3. **Blue**: tray bottom IC cavity wall size

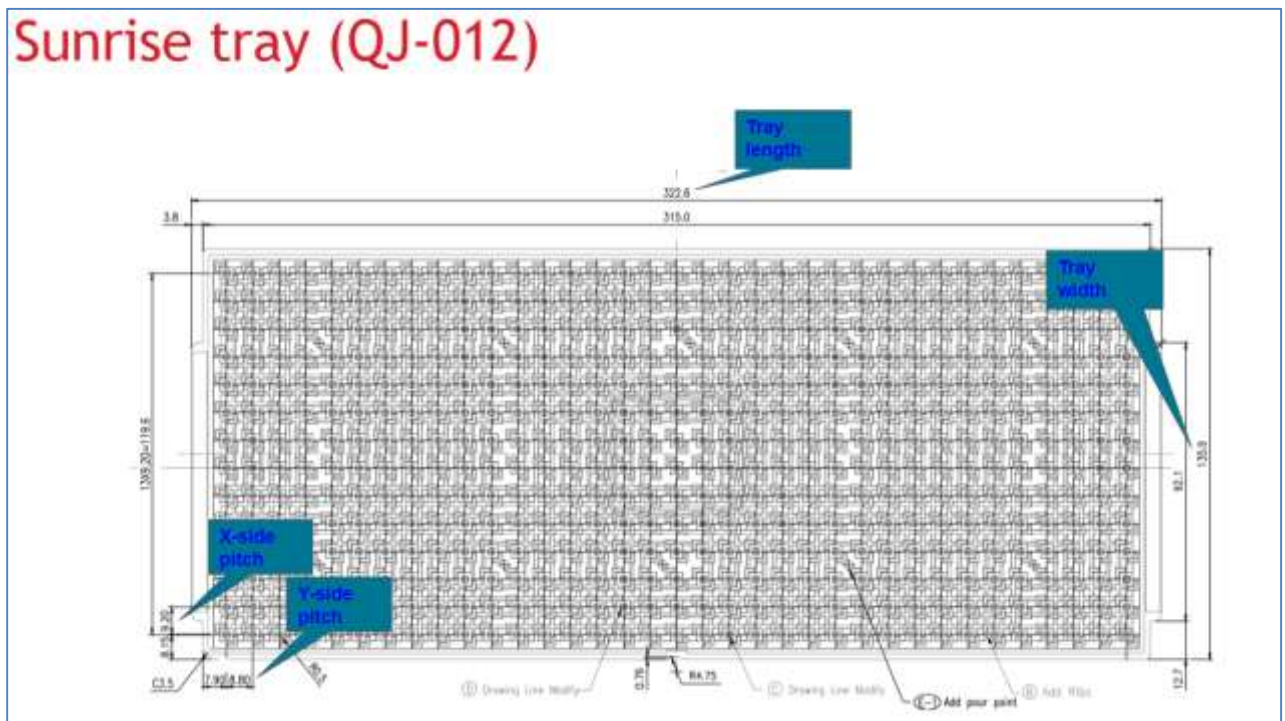
Sunrise and Hwa Shu tray cavity design compare

AS IS			Suggest to be		
Tray vendor	Tray drawing	Photo	Tray vendor	Tray drawing	Photo
Sunrise	Tray PN:51448	 Top view Back view	Hwa Shu	Tray PN:53523	 Top view Back view
<p>Tray design check:</p> <p>1. The original tray only has two cavity walls ,if IC unlocated into tray cavity that will cause IC rotation in tray cavity easily.</p> 			<p>Tray design check:</p> <p>1. The 4 tray cavity walls design is preferred and stable to make sure less IC rotation.</p> 		
<p>2. When IC rotation in tray and closed the top tray that not easy to detect the tray gap.</p>  <p style="text-align: center;">No tray gap</p>			<p>2. When IC rotation into tray and close tray by top tray that easy to detect the tray gap.</p>  <p style="text-align: center;">Tray gap</p>		

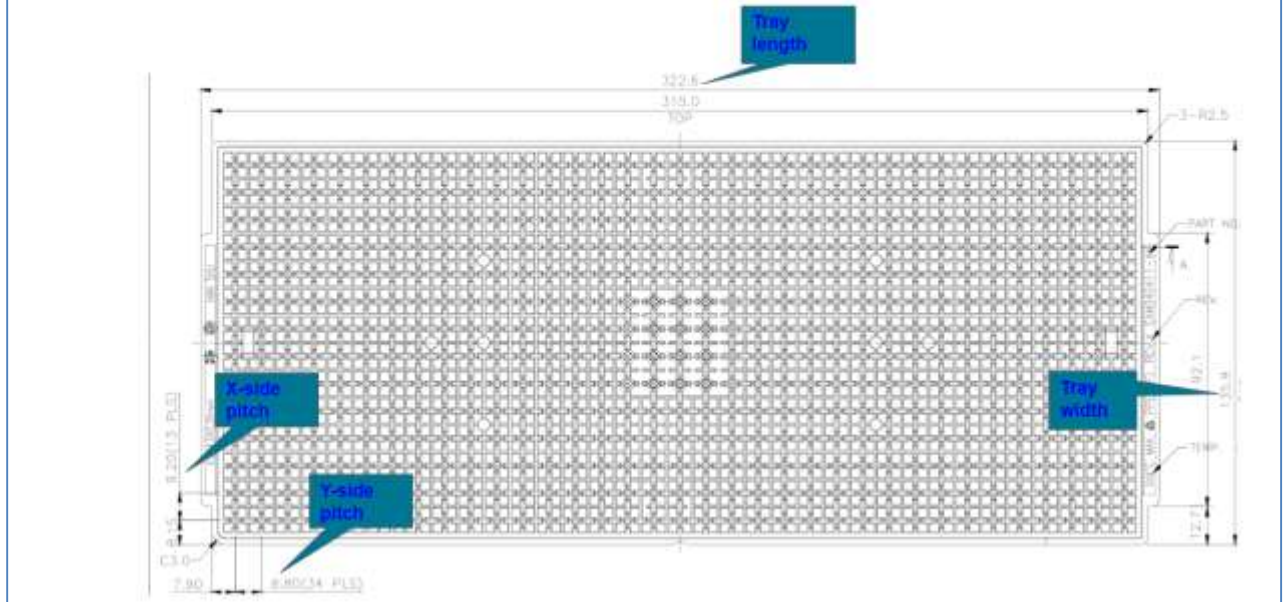
Sunrise and Hwa Shu tray out dimensions compare

Item	Sunrise tray (Tray drawing: QJ-012)	Hwa Shu tray (Tray drawing: EAM040411)	GAP
Tray Length	322.6mm	322.6mm	NO
Tray Width	135.9mm	135.9mm	NO
X-side pitch	9.20mm	9.20mm	NO
Y-side pitch	8.80mm	8.80mm	NO

Sunrise tray (QJ-012)

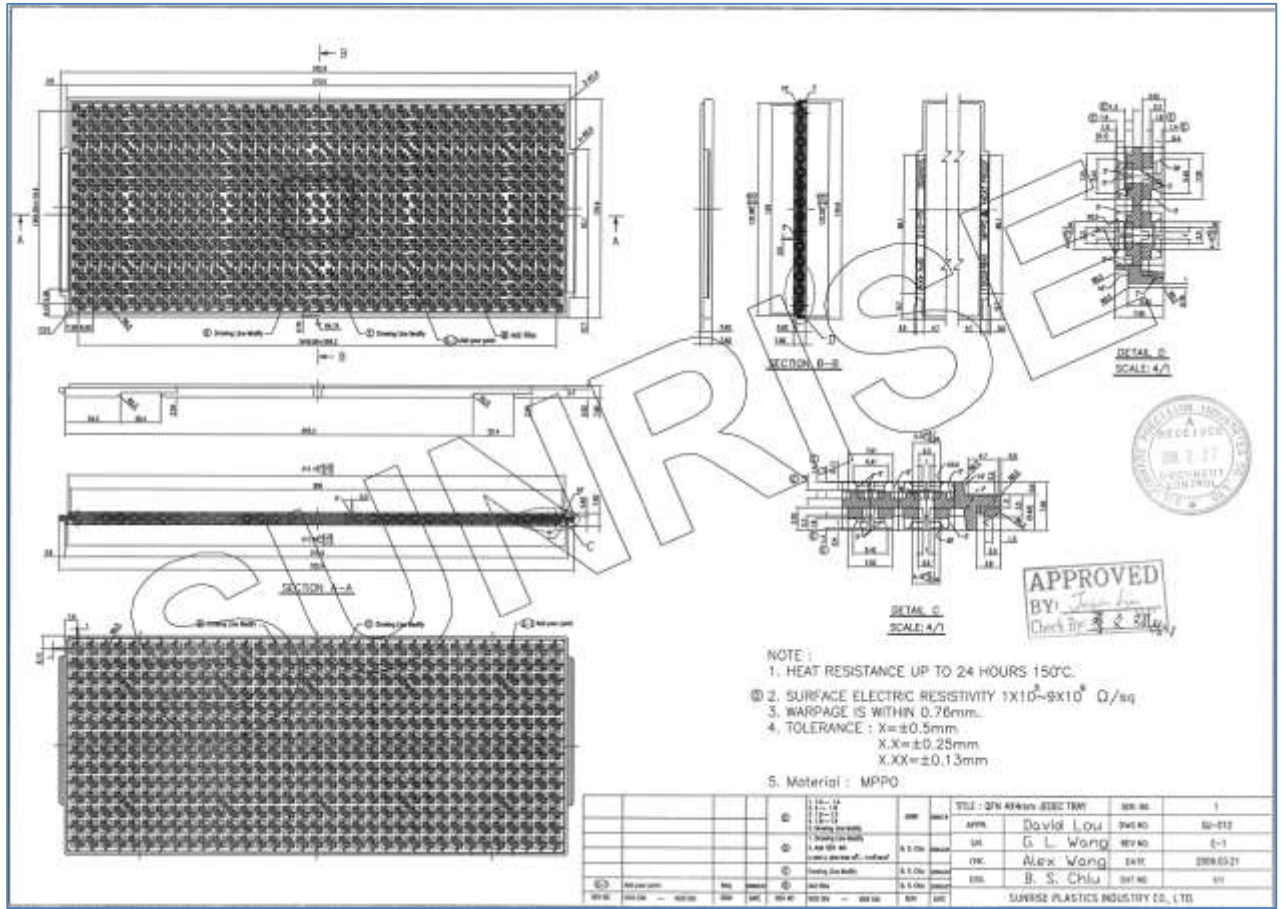


Hwa Shu tray (EAM040411)

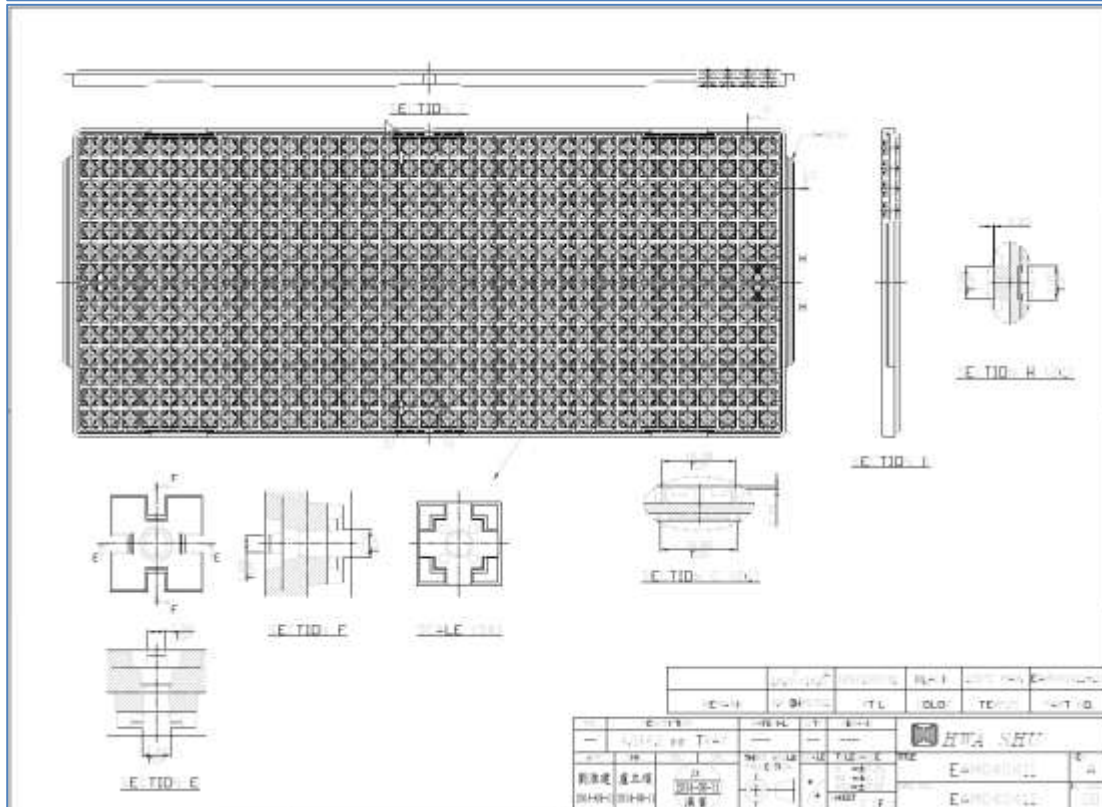
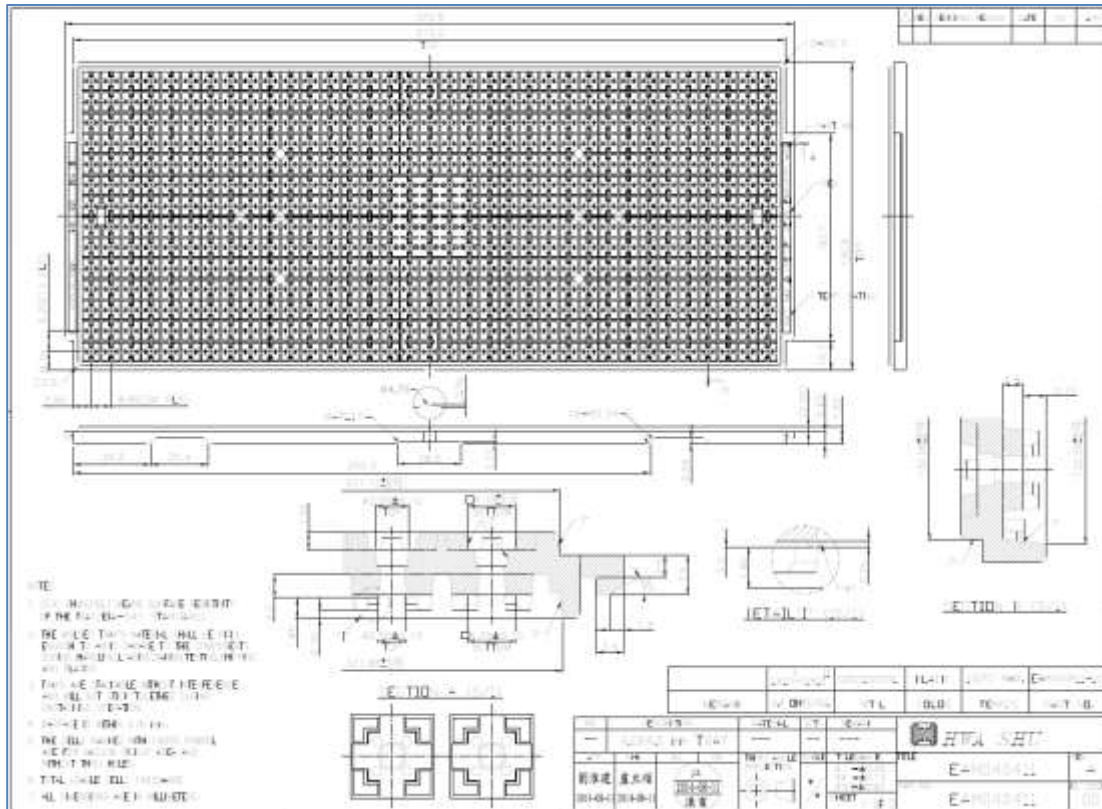


Appendix B

Pocket Design & Dimension of Sunrise QJ-012 Tray (QFN-4x4):



Pocket Design & Dimension of Hwa Shu EAM040411 Tray (QFN-4x4):



Appendix C

Note: Part Numbers containing an 'x' are customizable.

Affected Part Numbers		
Si5010-B-GM	Si5338E-A-GM	Si5350C-A-GU
Si5020-B-GM	Si5338E-B-GM	Si5350C-B-GM
Si5310-C-GM	Si5338F-A-GM	Si5350C-B-GT
Si5330A-B00200-GM	Si5338F-B-GM	Si5350C-B-GU
Si5330A-B00202-GM	Si5338G-A-GM	Si5351A-A-GM
Si5330B-B00204-GM	Si5338G-B-GM	Si5351A-A-GT
Si5330B-B00205-GM	Si5338H-A-GM	Si5351A-A-GU
Si5330B-B00206-GM	Si5338H-B-GM	Si5351A-B-GM
Si5330C-B00207-GM	Si5338J-A-GM	Si5351A-B-GT
Si5330C-B00208-GM	Si5338J-B-GM	Si5351A-B-GU
Si5330C-B00209-GM	Si5338K-A-GM	Si5351B-A-GM
Si5330F-B00214-GM	Si5338K-B-GM	Si5351B-A-GT
Si5330F-B00215-GM	Si5338L-A-GM	Si5351B-A-GU
Si5330F-B00216-GM	Si5338L-B-GM	Si5351B-B-GM
Si5330G-B00217-GM	Si5338M-A-GM	Si5351B-B-GT
Si5330G-B00218-GM	Si5338M-B-GM	Si5351B-B-GU
Si5330G-B00219-GM	Si5338N-A-GM	Si5351C-A-GM
Si5330H-B00220-GM	Si5338N-B-GM	Si5351C-A-GT
Si5330H-B00221-GM	Si5338P-A-GM	Si5351C-A-GU
Si5330H-B00222-GM	Si5338P-B-GM	Si5351C-B-GM
Si5330K-B00224-GM	Si5338Q-A-GM	Si5351C-B-GT
Si5330K-B00226-GM	Si5338Q-B-GM	Si5351C-B-GU
Si5330L-B00228-GM	Si5350A-A-GM	Si5356A-B-GM
Si5330L-B00229-GM	Si5350A-A-GT	Si5330x-xxxxxx-GM
Si5330L-B00230-GM	Si5350A-A-GU	Si5334x-xxxxxx-GM
Si5330M-B00231-GM	Si5350A-B-GM	Si5335x-xxxxxx-GM
Si5330M-B00232-GM	Si5350A-B-GT	Si5338x-xxxxxx-GM
Si5330M-B00233-GM	Si5350A-B-GU	Si5355x-xxxxxx-GM
Si5338A-A-GM	Si5350B-A-GM	Si5356x-xxxxxx-GM
Si5338A-B-GM	Si5350B-A-GT	Si5350x-xxxxxx-GM
Si5338B-A-GM	Si5350B-A-GU	Si5351x-xxxxxx-GM
Si5338B-B-GM	Si5350B-B-GM	
Si5338C-A-GM	Si5350B-B-GT	
Si5338C-B-GM	Si5350B-B-GU	
Si5338D-A-GM	Si5350C-A-GM	

Si5338D-B-GM

Si5350C-A-GT
