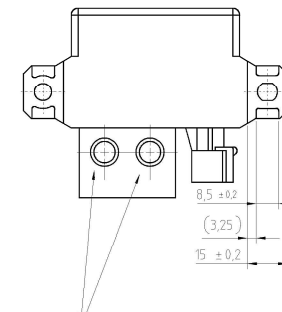
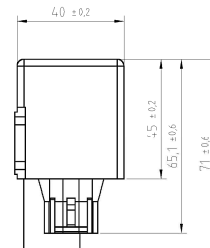
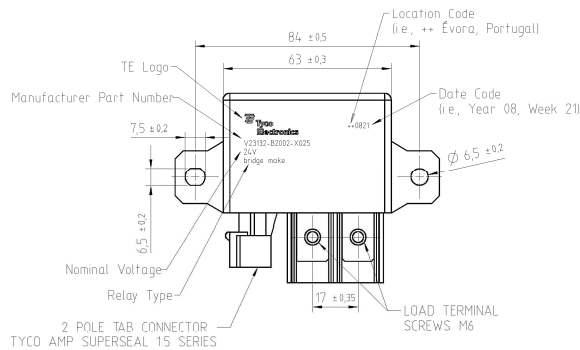
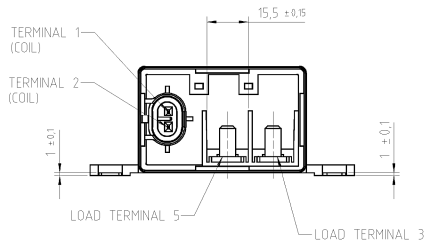
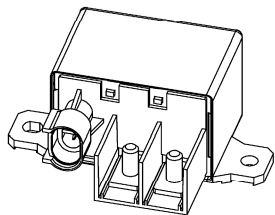
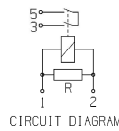


PART	MATERIAL	COATING
COVER	PA 66 GF 25	
BASE	PA 66 GF 25	
COIL TERMINAL 1	CuSn	Sn100 (2...6 microns)
COIL TERMINAL 2	CuSn	Sn100 (2...6 microns)
LOAD TERMINAL 3	ECu	Sn100 (1...4 microns)
LOAD TERMINAL 5	ECu	Sn100 (1...4 microns)
CONTACTS	AgSnO ₂	



Head of the screws glued.
Deposit areas for the glue.
Load terminals and screw heads have to be completely covered by glue.



Marking

Cover marking contains:
(Printed, molded or laser marked)

- TE logo
- TE part number
- Nominal voltage
- Relay type
- Date code

PROPRIETARY THE REPRODUCTION, TRANSMISSION OR USE OF THIS DOCUMENT OR IT'S CONTENTS IS NOT PERMITTED WITHOUT EXPRESSED WRITTEN AUTHORITY. OFFENDERS WILL BE FINED FOR ALL DAMAGES. ALL RIGHTS, INCLUDING RIGHTS CREATED BY REGISTERED PATENTS/GRANTED FOR A UTILITY MODEL OR DESIGN, ARE RESERVED.		CHANGES TO THIS DRAWING MUST BE DONE ONLY IN CAD	POWER SIZE A1
APPLICABLE SPEC.:		FINISH	
DIMENSIONS APPLY		PLATING	
TOLERANCE UNLESS SPECIFIED OTHERWISE		SCALE 1:1	WEIGHT
DRAWING S.M.		PART NAME	
NAME DANIL LOPES	DATE 23/09/2023	HCR150 BRIDGE MAKE 24V	
REV. 1	LOCATION Evora, Portugal	PART NO. V23132-B2002-X025	
INITIAL RELEASE 07/02/2011	DATE 07/02/2011	CUSTOMER DRAWING	
REV. CHANGE ORDER	DATE	13	16