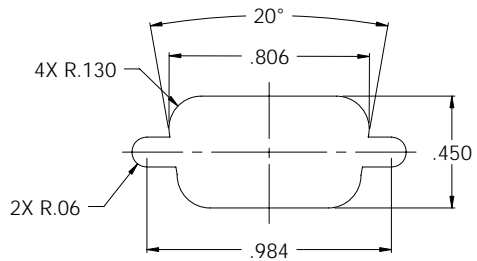
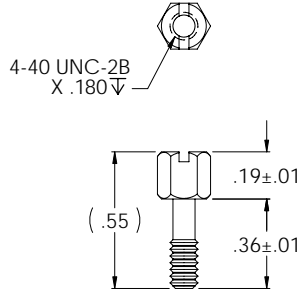
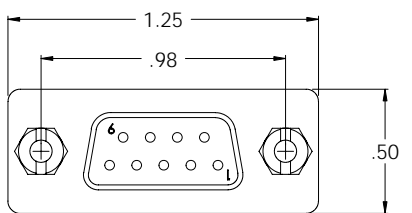
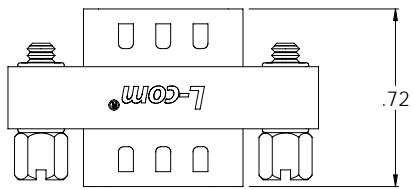


THE INFORMATION CONTAINED IN THIS DRAWING IS THE SOLE PROPERTY OF L-COM, INC. ANY REPRODUCTIONS IN PART OR WHOLE WITHOUT THE WRITTEN PERMISSION OF L-COM, INC. IS PROHIBITED.

REVISIONS			
REV	DESCRIPTION	DATE	APPROVED
D	ECN #1613 - ADDED COMPONENT SPECIFICATION TABLE	01/05/04	B.MAZURKA
E	REVISED ADDED HARDWARE DETAIL (ECN #1277)	01/06/03	MCCORMICK
F	REVISED ELECTRICAL SPECS (ECN# 1311)	02/21/03	MCCORMICK
G	ECN# 2698: REVISED SHEET TOLERANCE	01/17/07	MCCORMICK



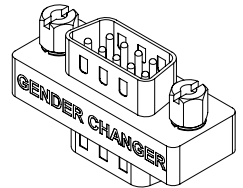
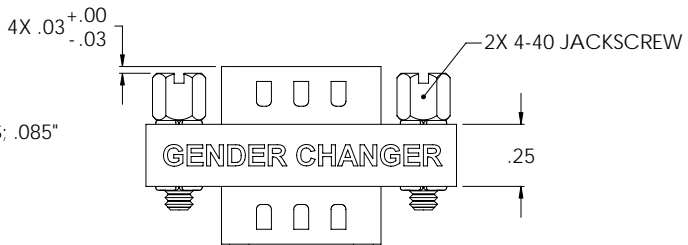
RECOMMENDED PANEL OPENING
(MAX PANEL THICKNESS: 0.06")



JACKSCREW SPECIFICATION

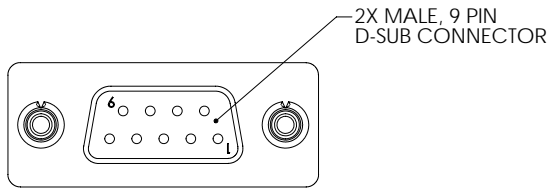
APPLICATION NOTES:
ALL PINS WIRED STRAIGHT THROUGH

LABELING:
PANTONE 2945 BLUE. "L-COM" FONT MyriaMM ITALIC.
"GENDER CHANGER" FONT ARIAL BOLD, TEXT HEIGHTS: .085"
TEXT COLOR: WHITE.



OUTLINE DRAWING

Component Specifications	
Material	
Shell	Steel
Contacts/Terminals	Copper Alloy
Hardware	Brass
Insulator	PBT Fiber Reinforced (UL 94V-0 Rated)
Finish	
Shell	Tin/Nickel Plated
Contacts/Terminals	Gold Flash Plated: 1 - 1.5µ inches
Hardware	Nickel Plated
Electrical	
Current Rating	3 AMP
Insulation Resistance	1000 MΩ Min @ 500 VDC
Dielectric Withstanding Voltage	1000 VAC (for One minute)
Environmental	
Operational Temperature Range	-55°C to +105°C



DIMENSIONS ARE IN INCHES (mm)
UNLESS OTHERWISE SPECIFIED,
TOLERANCES TO BE:
X ± .1 [2.5] ANGLES ± .1°
XX ± .05 [1.3]
XXX ± .005 [13]
OVERALL CABLE LENGTH TOL:
± .60 [15.24] ± .176 [21] ± .0
± .60 [15.24] ± .5% / 0%

APPROVALS	DATE
DRAWN BY D.PARIAM	11/12/2001
CHECKED BY T.CLARK	11/12/2001
APPROVED BY R.CARRICK	11/13/2001

		45 BEECHWOOD DRIVE NORTH ANDOVER, MA 01845	
CATEGORY D-SUBMINIATURE		PRODUCT DESCRIPTION ADPT, GNDR CHGR DB9 SLIM M/M	
SIZE B	P/SCM NO. 43321	DWG. NO. DGB9M-OD1	REV. G
SCALE: 2:1		CAD FILE: DGB9M-OD1.SLDDRW	
		SHEET 1 OF 1	

CONFIGURATION DETAILS OF UNDIMENSIONED FEATURES MAY VARY

