

UPS Pulsar

700/1000/1500 VA

On-line double conversion UPS

Maximum availability

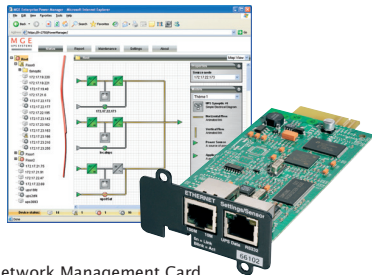
- ▶ Configuration. Double conversion on-line UPS with automatic by-pass and power correction factor.
- ▶ Powershare. The Pulsar output receptacles are individually controlled to provide load-shedding to maximize the backup time and provide remote reboot and sequential start-up as standard.
- ▶ Continuous power supply. Hot swappable batteries. The HotSwap MBP (Maintenance By-Pass) module allows the UPS to be replaced without interrupting the power supply.
- ▶ Long backup times. 1 to 4 EXB battery units can be added to the Pulsar 1000 or 1500.



1 to 4 EXB battery units can be added to increase the backup time of either Pulsar 1000 or 1500 UPSs.

Minimum total cost of ownership

- ▶ Easy operation. Multilingual display. Access to a wide range of measurements and set-up menus.
- ▶ Remote supervision. A wide range of options using the Solution-Pac supplied: SNMP and HTML, ModBus/JBus and relay outputs.



Network Management Card and MGE EPM Supervisor.



Mini-tower version.



RT2U version.

Flexibility

Pulsar offers maximum Flexibility.

- ▶ Format. Pulsar is available in tower format or RT2U convertible rack/tower version (for shallow rack mounting).
- ▶ Connections. With FlexPDU and HotSwap MBP, the RT2U models can be connected by sockets or terminal blocks. They can be installed as required behind, on the side or on top of the unit.
- ▶ Compatible with low power factor loads. Pulsar is rated for 0.9 total power factor (1500VA/1350 W, 1000VA/900W and 700VA/630W)
- ▶ Interfaces. USB + serial + remote start/stop + slot for optional communications card.



FlexPDU and HotSwap MBP can be mounted in many different positions.



Adjustable multilingual display.

Ideal protection for:



Servers, data storage and network equipment.



Telephony - VoIP.



Medical equipment - Industrial processes.

M G E

Office Protection Systems

An Eaton Brand



- 1 LCD Multilingual display
 - 6 languages,
 - displays measurements,
 - display alarms,
 - access to control and set-up menus.
- 2 Panel for replacing batteries without interrupting the output.
- 3 1 USB port + 1 serial port + remote ON/OFF and emergency stop contacts.
- 4 EXB battery unit connector.
- 5 EXB units recognized automatically.
- 6 4 NEMA 5-15R receptacles, including 2 Powershare programmable receptacles.
- 7 Communications card slot.
- 8 Mountings for HotSwap MBP and FlexPDU.



MGE Customer Service

2 year guarantee, including batteries

Standard exchange of product in case of failure, including batteries.

Associated services⁽¹⁾

Warranty+: 3 or 5 year extended guarantee.

1: Depending on the country, see www.mgeops.com/services

Communications software and hardware

Solution-Pac software on CD-ROM with each UPS

For monitoring the server(s) powered by the UPS and for local and remote UPS supervision.

Network Management Card (NMC) 2006

For connecting the UPS to an Ethernet 10/100 network, raising SNMP alarms and supervising the UPS using a simple browser interface.

NMC environmental sensor

Monitoring the temperature, humidity and 2 relay contacts via SNMP or HTML.

Enterprise Power Manager supervisor

For comprehensive management of a set of UPSs using a Windows PC.

Management-Pac 2 suite

NMS integration kit: HP OpenView, IBM Tivoli Netview, CA Unicenter, etc.

Management Card Contacts/Serial

To provide UPS status outputs via relay contacts, emergency stop and a second serial port.

NMC ModBus/JBus card

For combined SNMP, HTML and ModBus/JBus supervision.

UPS Control remote display

To monitor the UPS status up to 80 ft. from the unit.

Specifications

Pulsar	700	1000 - 1000 RT2U	1500 - 1500 RT2U
Rating	700 VA / 630 W	1000 VA / 900 W ⁽¹⁾	1500 VA / 1350 W ⁽¹⁾
Format	Mini tower	Mini tower or RT2U (tower/rack 2U)	
Electrical characteristics			
Architecture	On-line double conversion with automatic by-pass and power factor correction		
Input voltage and frequency ranges without using batteries	100/120/140/160 V ⁽²⁾ to 284V - 40 to 70 Hz		
Output voltage and frequency	120V (adjustable to 100/110/127 V), 50/60 Hz auto-select or frequency converter mode ⁽³⁾		
Connections			
Input	5-15P		
Outputs	(4) 5-15R Tower, (6) 5-15R RT2U		
Remotely individually controlled Powershare receptacles	(2) NEMA 5-15 receptacles		
Additional outputs with HotSwap MBP	(4) NEMA 5-15R		
Additional outputs with FlexPDU	(10) NEMA 5-15R, (10) NEMA 5-15/20R, (8) NEMA L5-20R		
Batteries			
Typical backup times for 50 and 70% of the VA rating			
Pulsar	16 min / 10 min	18 min / 12 min	13 min / 9 min
Pulsar + 1 EXB	-	75 min / 50 min	50 min / 35 min
Pulsar + 4 EXB	-	250 min / 200 min	180 min / 120 min
Battery management	Automatic weekly test (period adjustable using LCD display or in software supplied), automatic recognition of external battery units => continuous maximization of backup time + deep discharge protection		
Interfaces			
Indicators and display	3 LED + adjustable multilingual display: display of measurements, access to control and set-up menus		
Communication ports	1 USB port + 1 RS232 serial port and relay contacts ⁽⁴⁾ + 1 mini terminal block for remote ON/OFF and emergency stop		
Communications card slots	1 slot for NMC Minislot 2006 card or NMC ModBus/JBus or MC Contacts/Serial		
Operating conditions, standards and approvals			
Operating temperature	0°C to 40°C continuous, 45 dBA		
Performance - Safety - EMC	IEC 62 040-3 (VFI-SS-113), IEC 62 040-1-1, IEC 60 950-1 (RD), FCC Subpart B, class A		
Approvals	UL, cUL, CE, CB report		
Dimensions (H x W x D) / Weight			
Pulsar	9.52 x 6 x 17.32 in. / 27.5 lbs	9.52 x 6 x 17.32 in. / 33 lbs.	9.52 x 6 x 19.29 in. / 39.6 lbs.
Pulsar RT2U	-	3.4 x 17.24 x 19 in. / 39.6 lbs.	3.4 x 17.24 x 19 in. / 45 lbs.
Pulsar EXB	-	-	9.52 x 6 x 17.32 in. / 46.3 lbs.
Pulsar EXB RT2U	-	-	3.4 x 17.24 x 19 in. / 54 lbs.

1: Maximum rating with EXB battery units: Pulsar 1000 = 800 W, Pulsar 1500 = 1200 W. 2: Lower limits for <20%, <33%, <66%, >=66% of nominal power (VA). For active output power greater than 0.7 and 0.8 nominal rating, the lower limit is 180V and 190V respectively. 3: Derated by 15% when used as a frequency converter. 4: USB and RS232 serial ports cannot be used simultaneously.

Part numbers

	700	1000	1500
Pulsar	86700	86701	86703
Pulsar RT2U (includes rack kit)	-	86702	86704
Pulsar EXB	-	-	86705
Pulsar EXB RT2U (includes rack kit)	-	-	86706