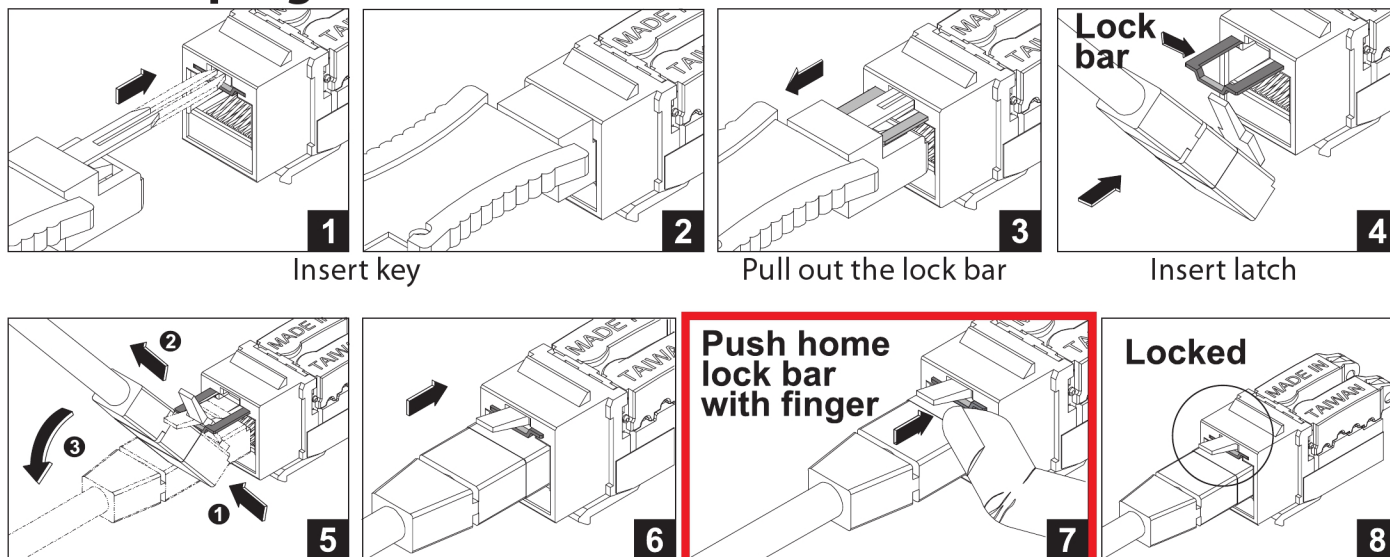




LOKJAC Instruction Manual

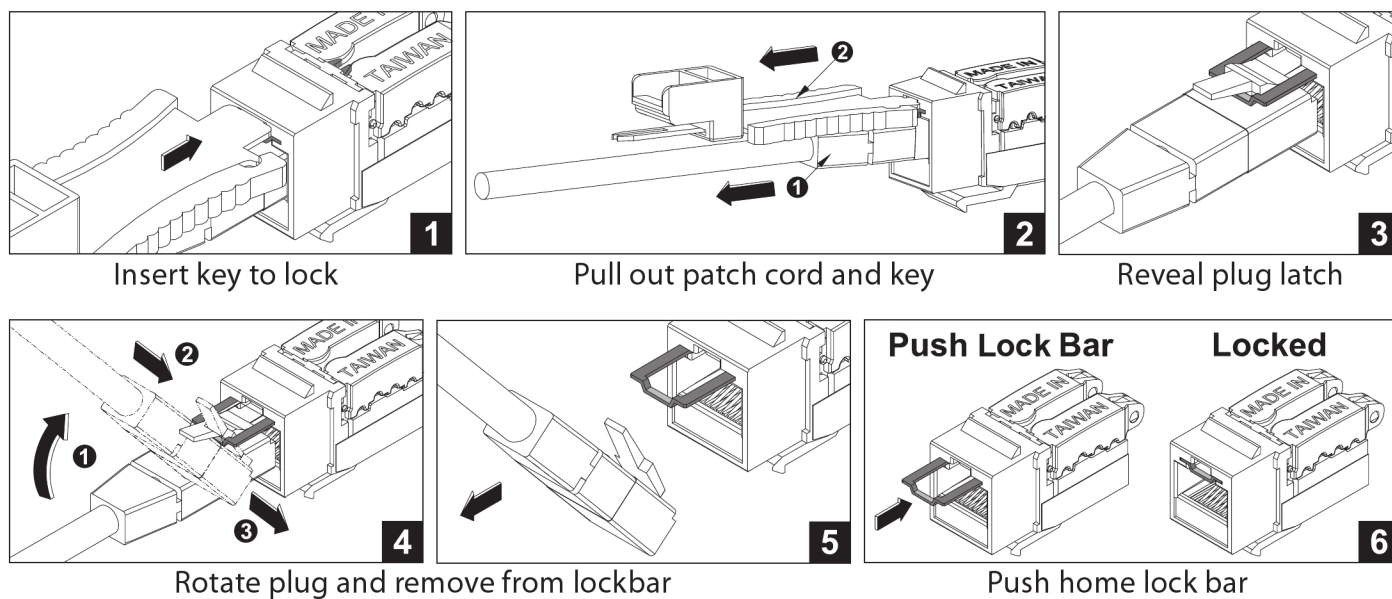


To lock the plug

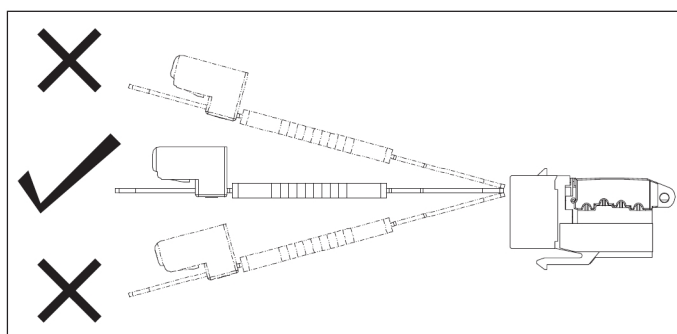
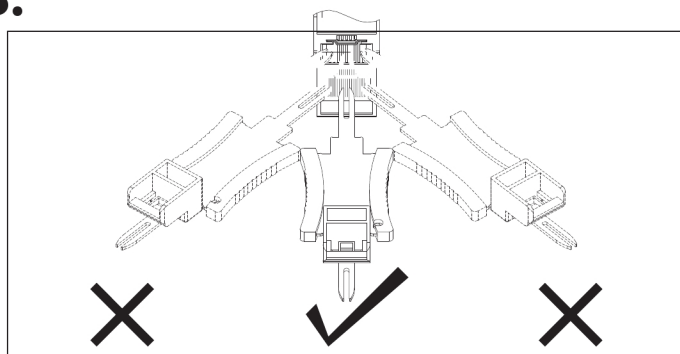


PLUG IS NOT SECURE UNTIL LOCKBAR IS PUSHED HOME

To release the plug



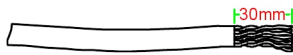
NB.



Key must be inserted perpendicular to the socket

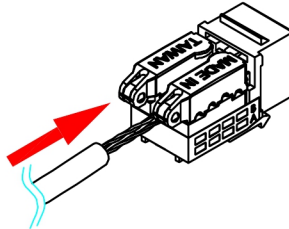
LOKJAC Assembly Instructions

Step 1



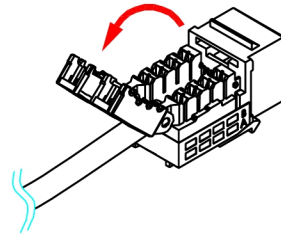
Strip around 30mm of cable PVC jacket.

Step 2



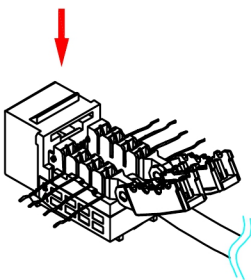
Place the cable between the two IDC rows

Step 3



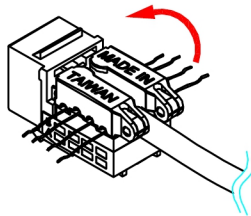
Open cable retention caps

Step 4



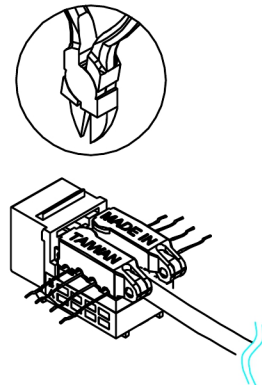
Place the cores onto the IDC gaps following the colour code

Step 5



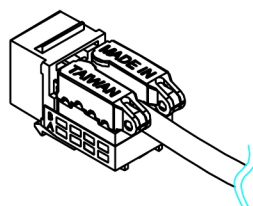
Press down cable retention caps

Step 6



Cut off spare wires

Step 7



Completed.