

PLEASE CHECK WWW.MOLEX.COM FOR LATEST PART INFORMATION

Part Number: [5024264010](#)
Status: **Active**
Overview: SlimStack™ 0.40mm Pitch Board-to-Board Connectors
Description: 0.40mm Pitch SlimStack™ Board-to-Board Receptacle, Surface Mount, Dual Row, Vertical, 1.00mm Stacking Height, with Solder Tabs, 40 Circuits

Documents:

[3D Model](#) [RoHS Certificate of Compliance \(PDF\)](#)
[Drawing \(PDF\)](#)

General

| | |
|----------------|---|
| Product Family | PCB Receptacles |
| Series | 502426 |
| Application | Board-to-Board, Signal |
| Overview | SlimStack™ 0.40mm Pitch Board-to-Board Connectors |
| Product Name | SlimStack™ |
| UPC | 800756676784 |

Physical

| | |
|--------------------------------|-----------------------|
| Circuits (Loaded) | 40 |
| Circuits (maximum) | 40 |
| Color - Resin | Black |
| Durability (mating cycles max) | 30 |
| Glow-Wire Compliant | No |
| Lock to Mating Part | Yes |
| Mated Height | 1.00mm |
| Material - Metal | Phosphor Bronze |
| Material - Plating Mating | Gold |
| Material - Plating Termination | Gold |
| Net Weight | 40.511/mg |
| Number of Rows | 2 |
| Orientation | Vertical |
| PCB Locator | No |
| PCB Retention | Yes |
| Packaging Type | Embossed Tape on Reel |
| Pitch - Mating Interface | 0.40mm |
| Polarized to Mating Part | No |
| Polarized to PCB | No |
| Stackable | No |
| Temperature Range - Operating | -25°C to +85°C |
| Termination Interface: Style | Surface Mount |

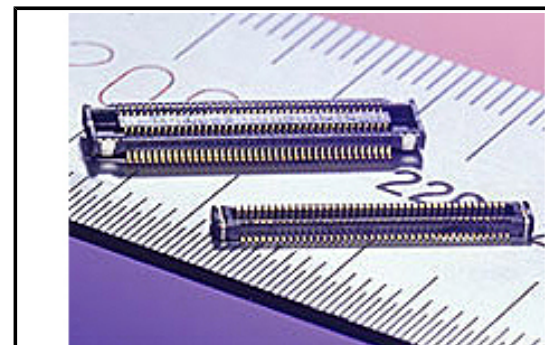
Electrical

| | |
|-------------------------------|-----------|
| Current - Maximum per Contact | 0.3A |
| Voltage - Maximum | 50V AC/DC |

Material Info

Reference - Drawing Numbers

Sales Drawing [SD-502426-001](#), [SD-502426-002](#)



Series image - Reference only

EU ELV

Not Relevant

EU RoHS

Compliant

REACH SVHC

Not Contained Per -
ED/21/2016 (20 June
2016)

Halogen-Free

Status

Low-Halogen

**Need more information on product
environmental compliance?**

Email productcompliance@molex.com
Please visit the [Contact Us](#) section for any
non-product compliance questions.

China ROHS

ELV

Green Image

Not Relevant

Search Parts in this Series

[502426](#) Series

Mates With

[502430](#) PCB Header