



### Main

Range of product	Modicon M171
Product or component type	Communication module
Communication port protocol	CAN2.B

### Complementary

Integrated connection type	CAN port wire crimp - twisted pair
Physical interface	Twisted pair
Supply	Via base board EVD/EVC
Product compatibility	Logic controller M171 performance Logic controller M172 performance
Product weight	0.077 kg

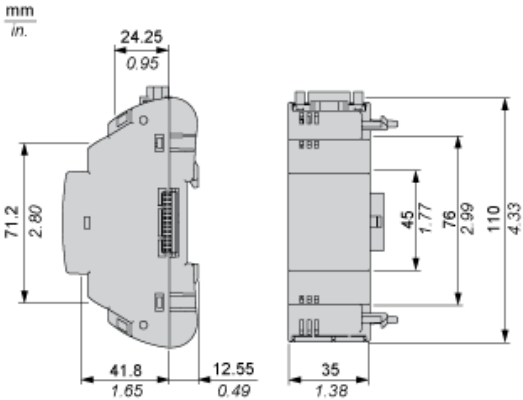
### Environment

Product certifications	EAC CSA cURus CE
Marking	CE
IP degree of protection	IP20
Ambient air temperature for operation	-10...55 °C
Ambient air temperature for storage	-20...85 °C
Relative humidity	10...90 % without condensation

### Offer Sustainability

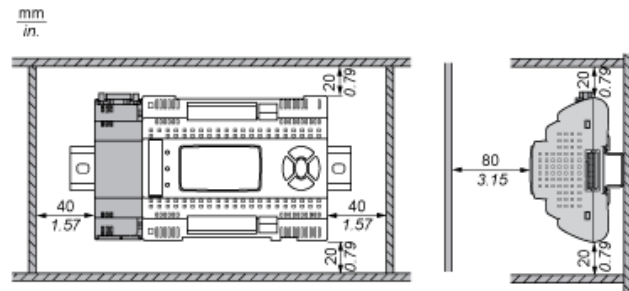
Sustainable offer status	Not Green Premium product
RoHS (date code: YYWW)	Compliant - since 1429 - Schneider Electric declaration of conformity <a href="#">Schneider Electric declaration of conformity</a>
REACH	Reference not containing SVHC above the threshold Reference not containing SVHC above the threshold

Dimensions

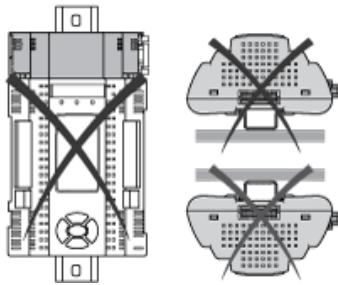


Mounting and Clearance

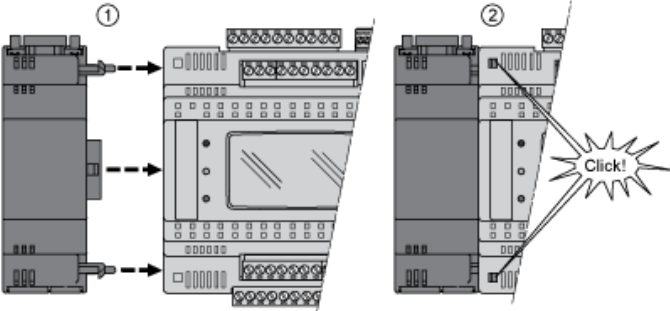
Clearance



Misplacement



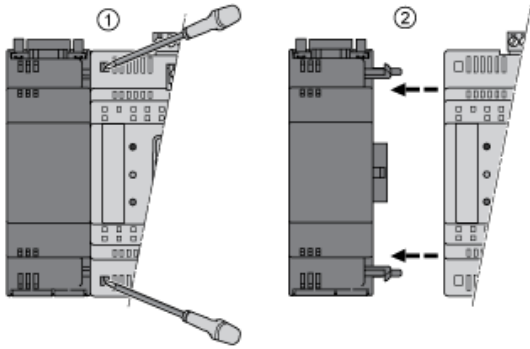
Mounting on Controller



---

Dismounting

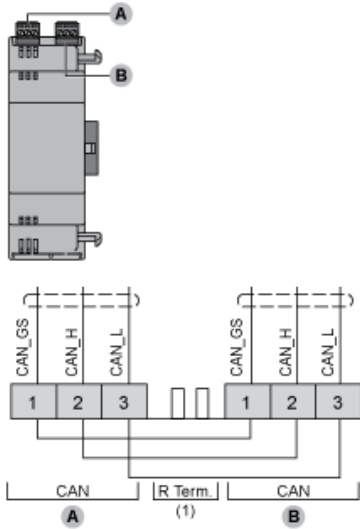
---



Connections and Schema

CAN Communication Module

TM171ACAN



(1) CAN terminal resistance.