



### Main

Range of product	Modicon M171
Product or component type	Communication module
Communication port protocol	HTTP Ethernet BACnet IP Modbus TCP SMTP

### Complementary

Integrated connection type	Ethernet RJ45 - twisted pair
Physical interface	RJ45 - 100BASE-TX
Supply	Via base board EVD/EVC
Product compatibility	Logic controller M171 performance
Product weight	0.077 kg

### Environment

Product certifications	CURus CE CSA EAC
Marking	CE
IP degree of protection	IP20
Ambient air temperature for operation	-10...55 °C
Ambient air temperature for storage	-20...85 °C
Relative humidity	10...90 % without condensation

### Offer Sustainability

Sustainable offer status	Not Green Premium product
RoHS (date code: YYWW)	Compliant - since 1426 - Schneider Electric declaration of conformity

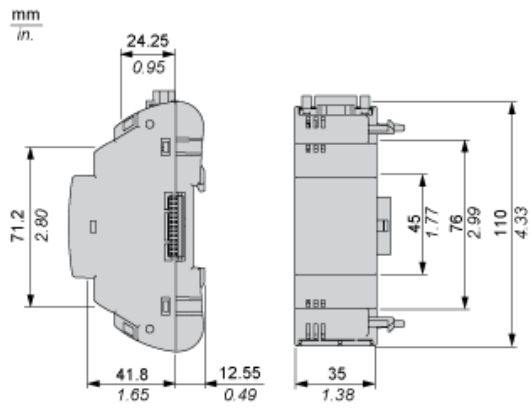
---

REACH

Reference not containing SVHC above the threshold  
Reference not containing SVHC above the threshold

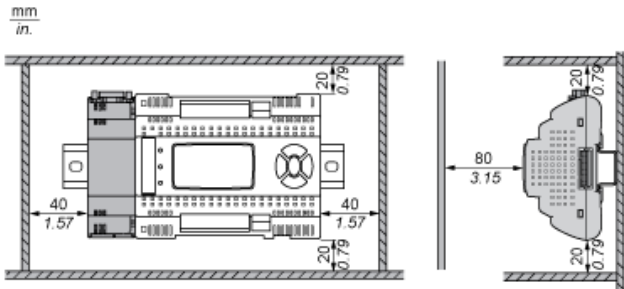
---

Dimensions

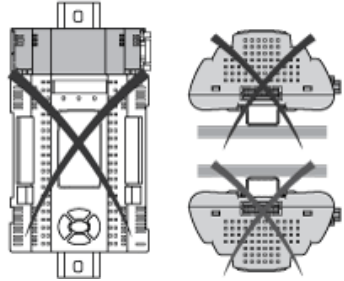


Mounting and Clearance

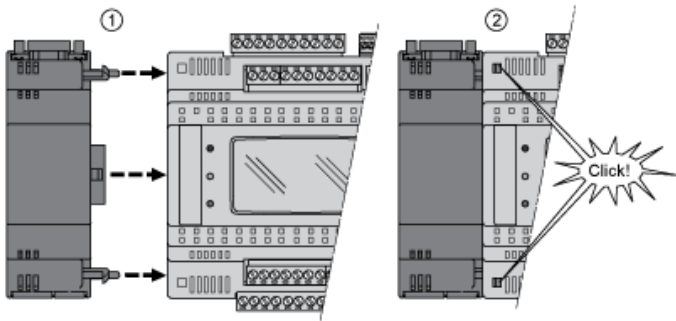
Clearance



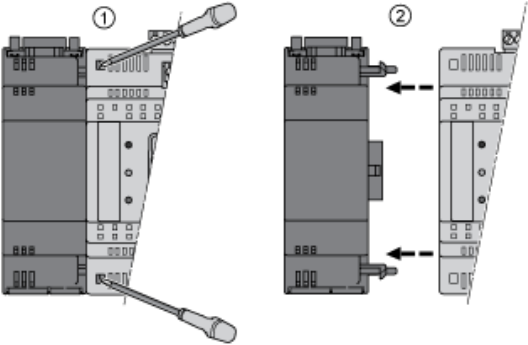
Misplacement



## Mounting on Controller



Dismounting



---

## Ethernet Port (ETH)

---

