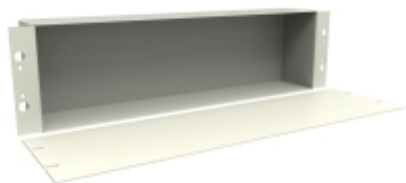


## Steel Rack Chassis With Panel *5- Series*



**Note:** This product line will soon be discontinued as a stocked series. Available while quantities last. For alternative solution assistance, please contact Hammond Customer Service - [sales@hammfg.com](mailto:sales@hammfg.com) or USA (716) 630-7030, Canada and International (519) 822-2960.



### Features

- Standard 19" rack mount
- Formed 16 gauge steel construction
- Panel mounts over chassis
- Textured powder paint finish

### Accessories

- Mounting Hardware
- Rack Mount Locking Hinged Door Panel
- Rail Mounting Hinged Security Door



Part No. Black	Part No. Gray	Overall Dimensions			Rack Units	Mounting Dimensions	
		Height	Width	Depth		Height	Width
5-350DBK2	5-350DGY2	3.19	17.00	3.07	2U	3.47	19.00
5-525DBK2	5-525DGY2	4.94	17.00	3.07	3U	5.22	19.00

*Data subject to change without notice*