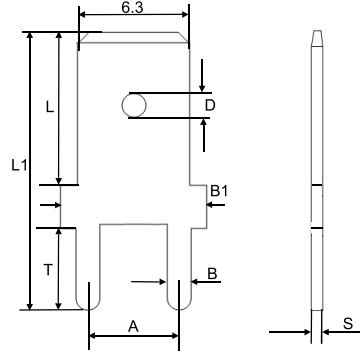


PCB TAB TERMINALS

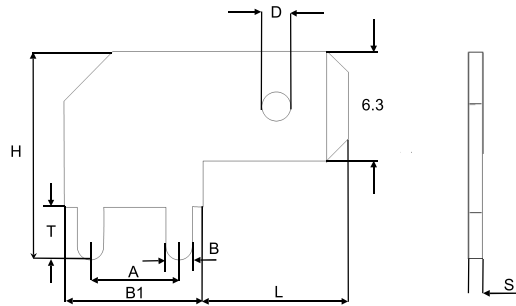
6.3mm PCB Tab Terminals



DIN 46342, part 1

Model No.	Material	Dimensions (mm)								
		T	L	L1	B1	A	D	B	S	Ø Thru hole
TAB 3866A.68(MS TIN)	Brass Tin Plated	3.6	8	14.2	8	5	1.65	1.3	0.8	1.3

Note: 1) Delivery lead times may vary depending on the product. Contact JST for details, these products are ONLY available from the following JST affiliates; J.S.T. (U.K.) Ltd, J.S.T. Belgium N.V., J.S.T. India Liaison Office, and JST-SouthAfrica.com.
 2) In line with a policy of continual product development, JST reserves the right to change the specifications of the goods described in the catalogue At any time and without prior notice.



DIN 46342, part 1

Model No.	Material	Dimensions (mm)								
		T	H	A	B1	L	D	B	S	Ø Thru hole
TAB 3867B.68(MS TIN)	Brass Tin Plated	3	12	5	8	8.2	1.65	1.3	0.8	1.3

Note: 1) Delivery lead times may vary depending on the product. Contact JST for details, these products are ONLY available from the following JST affiliates; J.S.T. (U.K.) Ltd, J.S.T. Belgium N.V., J.S.T. India Liaison Office, and JST-SouthAfrica.com.
 2) In line with a policy of continual product development, JST reserves the right to change the specifications of the goods described in the catalogue At any time and without prior notice.