

### FEATURES:

- Connector to accept Types RG: 174, 179A, 179B, 187, 187A, 188, 188A and 316/U
- Connector shall meet interface requirements of MIL-STD-348

### MATERIALS:

Body and Hardware – Brass

Center Contact – Gold Plated Brass

Dielectric – PTFE

Gasket – Silicone Rubber

Finish:

Body and Hardware – Tarnish Resistant

Center Contact – Gold Plated

### RATINGS:

Operating Voltage: 500 VRMS Max.

Nominal Impedance: 50 Ohms

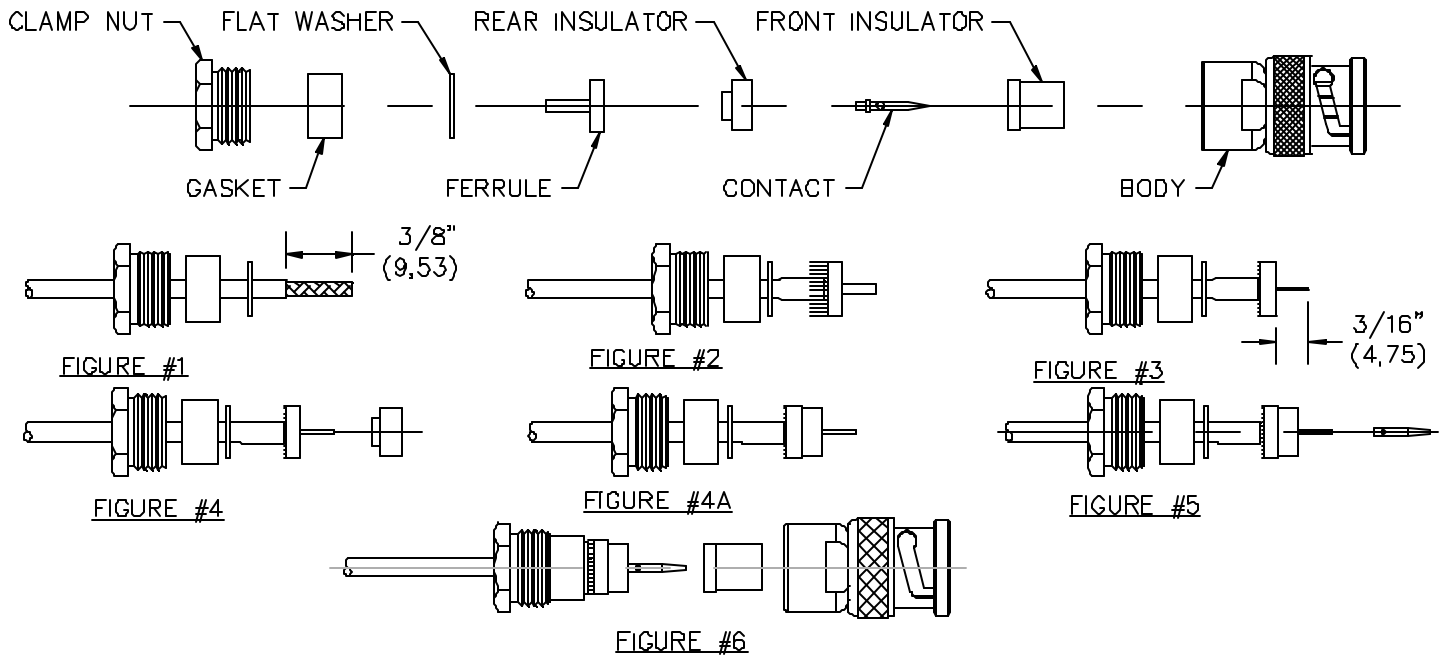
### ORDERING INFORMATION: Model 5307

All dimensions are in inches. Tolerances (except noted): .xx =  $\pm .02$ " (.51 mm), .xxx =  $\pm .005$ " (.127 mm).

All specifications are to the latest revisions. Specifications are subject to change without notice.

Registered trademarks are the property of their respective companies.

Made in USA



### FIGURE #1

- A. Slide clamp nut, gasket and washer over cable.
- B. Trim outer jacket from cable.

### FIGURE #2

- C. Fold back braid and push ferrule over dielectric to trap braid between outer jacket and the ferrule. Trim excess braid.

### FIGURE #3

- D. Trim back dielectric

### FIGURE #4 & 4A

- E. Slide rear insulator over dielectric until it stops against the ferrule.

### FIGURE #5

- F. Solder contact onto center conductor, press collar into recess in rear of insulator.

### FIGURE #6

- G. Slide washer, gasket and clamp nut up to ferrule trapping braid.
- H. Fit front insulator over contact and press into body.
- I. Tighten clamp nut.

All dimensions are in inches. Tolerances (except noted): .xx = ±.02" (.51 mm), .xxx = ±.005" (.127 mm).  
All specifications are to the latest revisions. Specifications are subject to change without notice.  
Registered trademarks are the property of their respective companies.

Made in USA