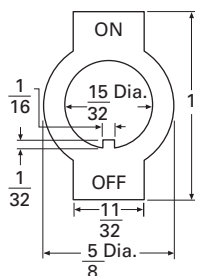
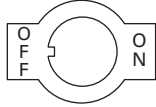
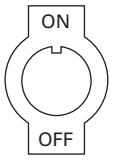
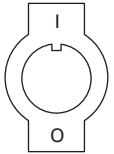


Toggle switch accessories

Table 1. Indicating Plates for 15/32-Inch Bushing-Mounted Switches

| Keyway Location | Marking | | Material | Finish | Part Number | |
|---|---|-------------|------------------|----------------------|-------------------|-------------------|
| | Opposite Keyway | Keyway Side | | | | |
| Keyway on bottom  | ON | OFF | 0.032 inch steel | Plain | 30-5632 | |
| | | | 0.032 inch steel | Statuary bronze | 30-5632-3 | |
| | | | 0.032 inch steel | Burnished nickel | 30-5632-4 | |
| | | | 0.032 inch brass | Black cupric oxide ① | 30-2899-3 | |
| | RAD | PHO | 0.032 inch steel | Statuary bronze | 30-5632-7 | |
| | | | 0.032 inch steel | Burnished nickel | 30-5632-6 | |
| | RUN | START | 0.032 inch steel | Burnished nickel | 30-5632-11 | |
| | HOT | COLD | 0.032 inch steel | Burnished nickel | 30-5632-15 | |
| | HI | LOW | 0.032 inch steel | Burnished nickel | 30-5632-16 | |
| | ON | STOP | 0.032 inch steel | Burnished nickel | 30-5632-17 | |
| | FOR | REV | 0.032 inch steel | Burnished nickel | 30-2899-2 | |
| | AUTO | TEST | 0.032 inch steel | Burnished nickel | 30-2899-6 | |
| | PUSH | START | 0.032 inch steel | Burnished nickel | 30-2899-7 | |
| | RUN | TEST | 0.032 inch steel | Burnished nickel | 30-2899-9 | |
| | BLANK | BLANK | 0.032 inch steel | Plain | 30-5632-5 | |
| | | | 0.032 inch steel | Burnished nickel | 30-5632-8 | |
| | | | 0.032 inch brass | Brushed | 30-5632-9 | |
| | Keyway on side  | ON | OFF | 0.032 inch steel | Burnished nickel | 30-5632-13 |
| | | OFF | ON | 0.032 inch steel | Burnished nickel | 30-2899-8 |
| Keyway on top  | T | B | 0.032 inch steel | Burnished nickel | 30-5632-12 | |
| | OFF | ON | 0.032 inch steel | Burnished nickel | 30-5632-14 | |
| | SET | RUN | 0.032 inch steel | Burnished nickel | 30-2899-10 | |
| | BLANK | RESET | 0.032 inch steel | Burnished nickel | 30-2899-12 | |
| Keyway on top  | O | I | 0.032 inch steel | Burnished nickel | 30-5632-23 | |
| | I | O | 0.032 inch steel | Burnished nickel | 30-5632-19 | |

① White lettering.



Powering Business Worldwide

Effective February 2013

Table 2. Switch Guards ①

| Switch Positions | Keyway Location | Mounting | Catalog Number |
|------------------|---------------------|----------|----------------|
| 2 | Opposite hinged end | OHM | E10TA104 |

① Red phenolic lever material.

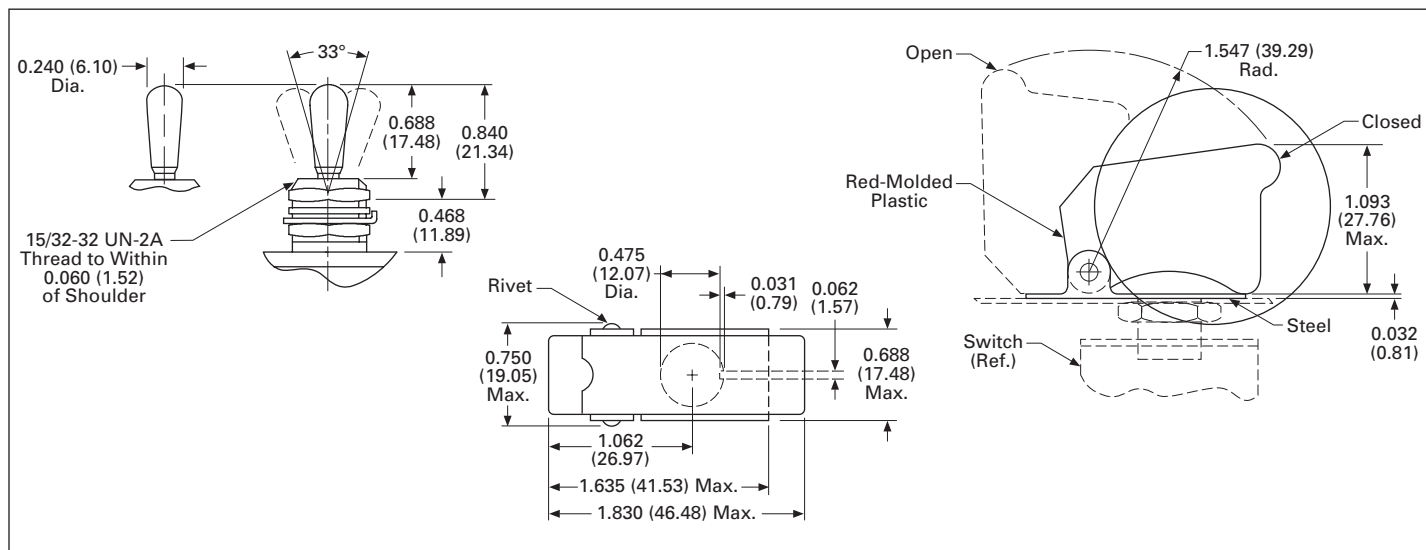


Figure 1. Switch Guard—Approximate Dimensions in Inches (mm)

Table 3. Mounting Hardware for One-Hole Mounting Switches—Dimensions in mm (Inches) ①②

| Size | Description | Material | Thickness (Dim. A) | Inside Diameter (Dim. B) | O.D. or Dim. Across Flats (Dim. C) | Dim. Across Corners (Dim. D) | Catalog Number |
|--|---------------------------|---------------------------------|--------------------|--------------------------|------------------------------------|------------------------------|-------------------|
| Mounting Nuts | | | | | | | |
| 15/32-32 | Hexagon locknut | Zinc-chromate treated | 1.91 (0.075) | — | 15.88 (0.625) | — | 15-192 |
| | | Bright nickel-plated brass | 1.98 (0.078) | — | 13.87 (0.546) | 15.88 (0.625) | 15-2525-58 |
| | | Nickel-plated brass | 1.98 (0.078) | — | 13.87 (0.546) | 15.88 (0.625) | 15-2525-59 |
| | | Zinc-chromate treated | 4.76 (0.188) | 19.89 (0.783) | 25.80 (1.125) | — | 15-2528-2 |
| | Hexagon facenut | Nickel-plated brass | 1.98 (0.078) | — | 14.27 (0.562) | 16.66 (0.656) | 15-966-2 |
| | | Semi-lustre nickel-plated brass | 1.98 (0.078) | — | 14.27 (0.562) | 16.66 (0.656) | 19-966-6 |
| | Knurled facenut | Bright nickel-plated brass | 1.68 (0.066) | 14.27 (0.562) | 14.27 (0.562) | — | 15-124F1 |
| | | Black cupric oxide-plated brass | 1.68 (0.066) | 14.27 (0.562) | 14.27 (0.562) | — | 15-124F5 |
| | | Nickel-plated brass | 2.77 (0.109) | 15.88 (0.625) | 15.88 (0.625) | — | 15-90 |
| | Chamfered dress nut | Bright nickel-plated brass | 3.84 (0.151) | 7.92 (0.312) | 17.45 (0.687) | — | 15-994-2 |
| Standard knurl nut with shoulder | Nickel-plated brass | 2.77 (0.109) | — | 15.06 (0.593) | — | 15-2534-14 | |
| Dress nut | Satin chrome-plated brass | 3.18 (0.125) | — | 14.27 (0.562) | — | 15-2523-4 | |
| | Black nylon | 4.75 (0.187) | 9.91 (0.390) | 16.26 (0.640) | — | 15-1048-3 | |
| Knurled dress nut | Chrome-plated brass | 4.75 (0.187) | 7.92 (0.312) | 16.26 (0.640) | — | 15-189-5 | |
| Mounting Washers and Locking Ring | | | | | | | |
| For 15/32 bushing | Plain washer | Cadmium-plated steel | 0.79 (0.031) | 12.29 (0.484) | 19.05 (0.750) | — | 16-1382 |
| | Internal tooth lockwasher | Trivalent zinc-plated steel | 0.53 (0.021) | 11.96 (0.471) | 15.06 (0.593) | — | 16-3557 |
| | Locking ring | Zinc-plated steel | 1.02 (0.040) | 12.07 (0.475) | 18.24 (0.718) | — | 29-761-5 |

① Hardware items are sold for use with Eaton switches only. Minimum ordering quantity on all items is 100. All bushing-mounted switches are furnished with two mounting nuts. One nut is mounted behind the panel to prevent the bushing sleeve from being distorted if the front panel is overtightened. Eaton accepts no responsibility for damage to switches mounted without the backup nuts.

② Refer to **Table 4** for dimensional diagrams.

Table 4. Dimensions—Approximate in mm (Inches)

| | |
|---|--|
| | |
| <p>Hexagon Locknuts or Facenuts</p> | <p>Knurled Dress Nut Catalog Number 15-1048-3</p> |
| | |
| <p>Knurled Facenut</p> | <p>Dress Nut Catalog Number 15-2523-4</p> |
| | |
| <p>Knurled Nut with Shoulder</p> | <p>Plain Washer</p> |
| | |
| <p>Chamfered Dress Nut Catalog Number 15-994-2</p> | <p>Internal Tooth Lockwasher</p> |
| | |
| <p>Knurled Dress Nut Catalog Number 15-189-5</p> | <p>Locking Ring</p> |

Panel seal

- Prevents moisture and contaminants from entering panel enclosure
- Behind panel mounting
- Stainless steel cup washer ensures proper seating of silicone rubber seal
- Seal withstands 20 psi water pressure
- Catalog Number 32-341

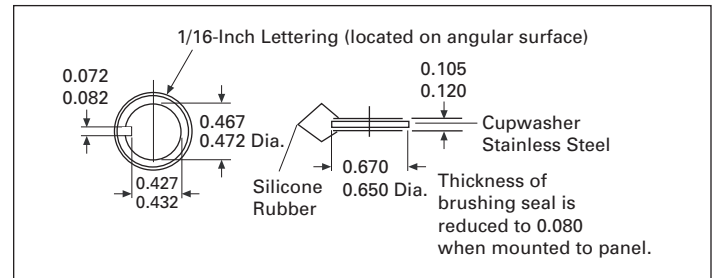


Figure 2. Panel Seal—Dimensions in Inches

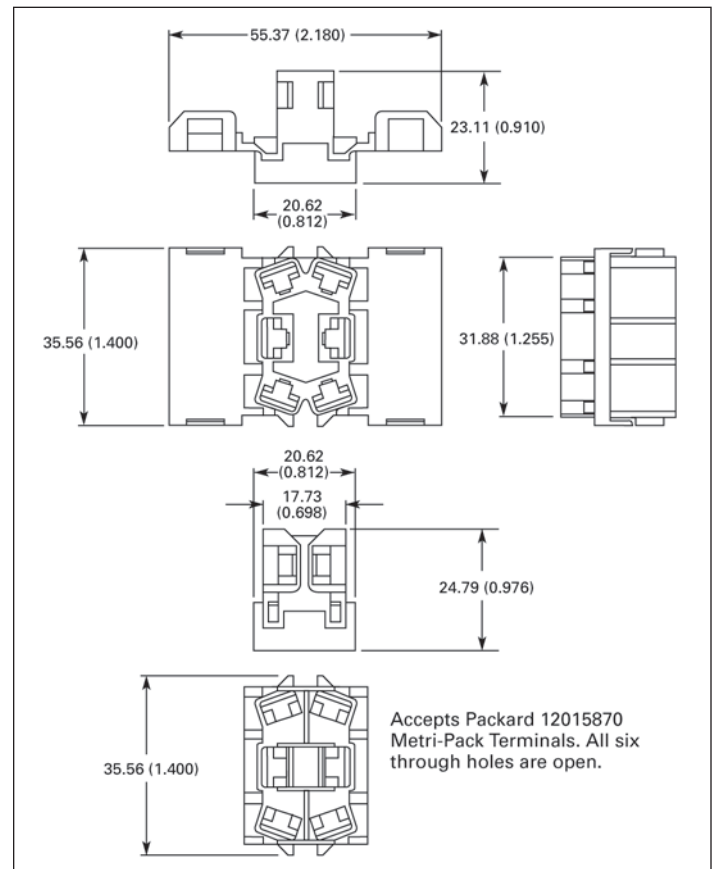


Figure 3. Two-Pole Base Connector, Catalog Number 28-3426—Dimensions in mm (Inches)

Eaton Corporation
Electrical Sector
1111 Superior Avenue
Cleveland, OH 44114 USA
Eaton.com

© 2013 Eaton Corporation
All Rights Reserved
Printed in USA
Publication No. TD07002001E / Z13275
February 2013



Eaton is a registered trademark
of Eaton Corporation.

All other trademarks are property
of their respective owners.