



Solving your relay requirements since 1922

Amperite Co.
567 52nd Street
P.O. Box 329
West New York, NJ 07093
(800) 752-2329
www.Amperite.com

DF Series Flasher

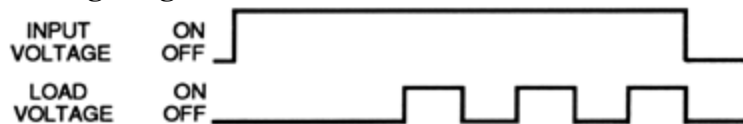


- ... Solid state analog flasher circuitry
- ... No moving parts to wear out - totally encapsulated circuitry
- ... 2A load rating
- ... Low cost
- ... Small size
- ... Universal Input -24V to 120V AC and DC operation in one device
- ... 2 terminal configuration - easy connection to load
- ... Factory fixed flash rates from 2 to 1000 FPM
- ... UL File #E96739 (M)
- ... CSA File #LR62586-3

Timing Mode:

On/off recycling solid state flasher. The flash rates are fixed and are available from 2 to 1000 flashes per minute (FPM). Duty cycle is approximately 50% with custom duty cycles available.

Timing Diagram:



Output Circuit:

Totally solid state switching device.

Rating:

(Resistive): 2A @ 120V AC or DC, 10 ma minimum load,

(Inrush): 10A maximum.

Higher loads and inrush capabilities are available.

Expected Life @ 25°C: Solid state circuitry - no moving parts to wear out.

Environmental Information:

Temperature Range: Operating & storage: -23°C to +60°C, (-10°F to +140°F)

Mechanical Information:

Termination: .250 inch quick connect terminals are standard; .110 inch, screw terminals, or 18" wires are available.

Enclosure: Black plastic case

Mounting: Single screw or optional 2-screw panel mount

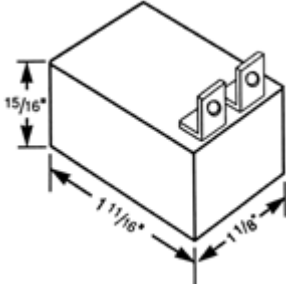
Weight: 2 oz (56g) approx.



Solving your relay requirements since 1922

Amperite Co.
 567 52nd Street
 P.O. Box 329
 West New York, NJ 07093
 (800) 752-2329
 www.Amperite.com

Outline Dimensions:



Timing Specifications:

Flash Rate - Fixed: Standard - 30, 45, 60, 75, 90 & 120 FPM. Custom rates available from 2 to 1000 FPM.

Flash Rate Tolerance: $\pm 10\%$

Input Information:

Voltage: Universal input type: 24 - 120V AC or DC. Custom voltages from 5 - 240V are available.

Power Requirement: 3 Watts or less

Input Voltages & Limits:

UNIVERSAL INPUT VOLTAGE

Nominal	Minimum	Maximum
24 - 120V AC/DC	22V AC/DC	125V AC/DC

SINGLE VALUE VOLTAGES

Nominal	Minimum	Maximum
12V AC	10V	14V
24V AC	20V	28V
48V AC	41V	55V
115V AC	105V	130V
12V DC	11V	14V

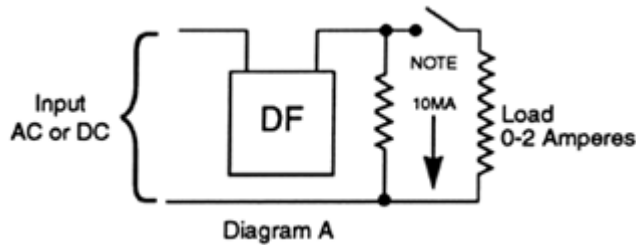


Solving your relay requirements since 1922

Amperite Co.
567 52nd Street
P.O. Box 329
West New York, NJ 07093
(800) 752-2329
www.Amperite.com

24V DC	20V	28V
48V DC	41V	55V

Wiring Diagram:



Note: Optional 10 MA load may be used to reduce initial delay time.



Ordering Information:

Definition of a part number for the Amperite DF Series Flasher.

Example:

24-120 A F 60 H Q DF
 ↑ ↑ ↑ ↑ ↑ ↑ ↑
 A B C D E F G

A: Denotes input voltage: Universal input voltages from: 24 - 120V AC or DC. Can be replaced by a single value from 5 - 240 for custom voltages.

B: For custom voltages only - Denotes type of input current required for operation

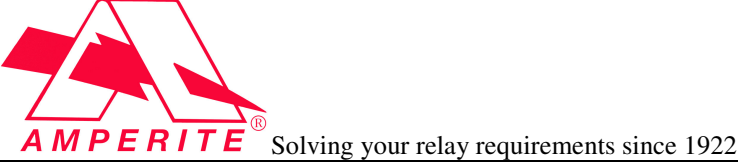
A = AC - Alternate Current

D = DC - Direct Current

C: Denotes flasher configuration.

D: Denotes flash rate. Standard rates are 30, 45, 60, 75, 90 & 120 FPM. Custom rates are available from 2 to 1000 FPM.

E: Denotes load current options - Blank = Standard, H = Higher Operating Current.

	Amperite Co. 567 52nd Street P.O. Box 329 West New York, NJ 07093 (800) 752-2329 www.Amperite.com
---	--

F: Denotes form of termination - Blank = .250 Male Quick Connect Terminals (standard), S = Screw Terminal (optional), Q = .110 Male Solder Terminals (optional), W = two 18" wires (optional).

G: Denotes solid state 2-terminal DF flasher.

