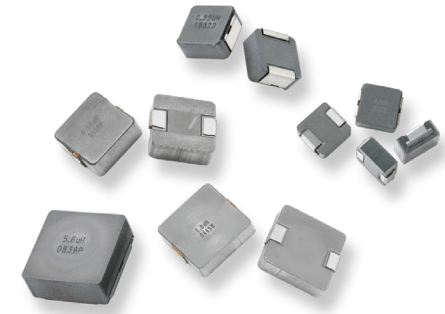







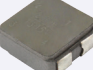

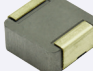

# CAPABILITIES AND CUSTOM OPTIONS

## POWER INDUCTORS

Application	Advantage
Filter	<ul style="list-style-type: none"> <li>• Lowest DCR for improved efficiency</li> <li>• High saturation reduced PCB area / profile</li> </ul>
Energy Storage	<ul style="list-style-type: none"> <li>• Highest saturation reduced PCB area / profile</li> <li>• Low core loss for improved efficiency</li> <li>• High frequency operation for improved efficiency</li> </ul>



### SPECIALTY DEVICES

Design advantage	Solution	Series
EMI reduction	E-shield	IHLE 
Board space saving	Dual inductor	IHLD 
Lower profile height	Inset profile	IHLW 
SEPIC	Coupled inductor	IHCL 
Moisture resistant	Molded inductor	IHLM 
Ag epoxy bonding	Au terminations	IHLG 
AMS whisker mitigation	SnPb terminations	L1 / 1L / 5L / 8L 

### CUSTOM OPTIONS

Capabilities
<ul style="list-style-type: none"> <li>• Profiles</li> <li>• Inductance values</li> <li>• DCR options</li> <li>• Tight tolerance</li> <li>• Polarity mark</li> <li>• Terminations and stand offs</li> <li>• Space grade</li> <li>• Turns ratios (dual versions)</li> </ul>

Temperature Range (°C)	Commercial / Industrial Code	Automotive AEC-Q200 Material Code
-55 to + 125	01 / 11	A1 / 1A
-55 to + 155	51	5A
-55 to + 180	81	8A