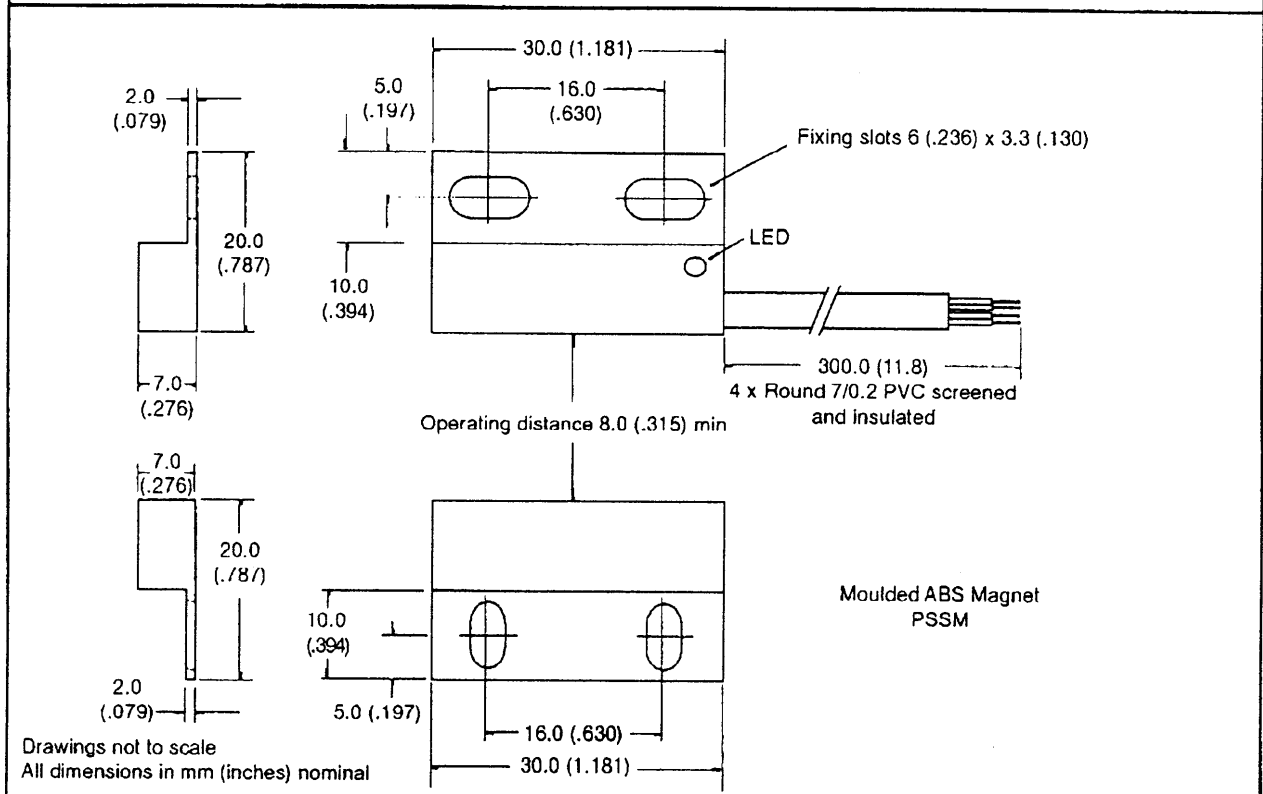


723-0412

FORM AE043 ISS1

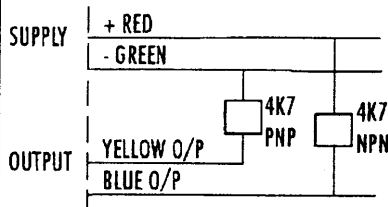
Comus Group of Companies

PRODUCT DATA SHEET



SPECIFICATION

| | | |
|-----------------------|----------|----------------|
| SUPPLY VOLTAGE | Max. Vdc | 10 - 20 |
| ON CURRENT | Max. mA | 25 |
| OUTPUT TYPE | | Open Collector |
| OUTPUT CURRENT | Max. mA | 250 |
| OUTPUT LOADING | | 4.7K |
| PROXIMITY OPERATION | | See Below |
| OPERATING DISTANCE | Min. mm | 8 |
| OPERATING TEMPERATURE | Deg. °C | -30° + 70° |
| STORAGE TEMPERATURE | Deg. °C | -30° + 75° |
| CASE MATERIAL | | ABS |



Red = +v,
Green = 0V
Blue = NPN Output (4.7k ohms to +V)
Yellow = PNP Output (4.7k ohms to 0V)

- PNP + NPN Output
- Normally Open Contact
- Magnet Activated Bounce Free Operation
- LED indication

NOTE: When power is applied the red indication LED will glow dimly to indicate power is at the device. When a magnet is present in on target the LED will illuminate at full brightness.

RECTANGULAR MAGNETIC PROXIMITY SWITCHES

**PART NUMBER
PSS25S/30**

| Rev. No. | Revision Note | Date | Signature |
|----------|---------------|--------|-----------|
| 2 | Web Site 1999 | 1-9-99 | RG |

The Comus Group of Companies consist of:
Assemtech Europe Limited
E. Bachem GmbH
Comus International
W. Gunther GmbH
Gunther Belgium
Gunther France
S.T.G.