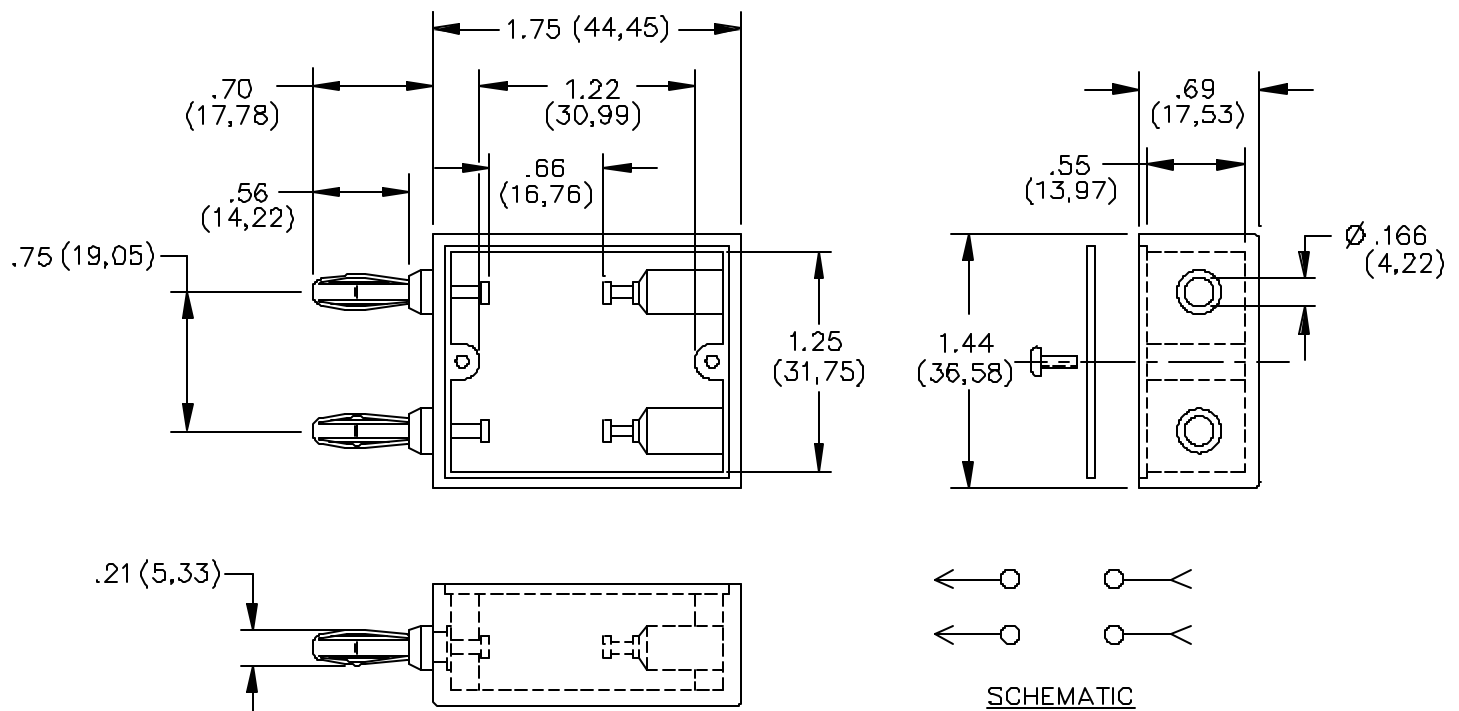


Model 2098 Phenolic Box Component Mounting Banana Jack To Double Plug



MATERIALS:

Polarity Marker: Color: Red

Banana Plug Springs: Beryllium Copper, Cond. H.T.

Finish: Nickel plated per QQ-N-290, Class 2, 200/300 microinches

Banana Plug Bodies: Brass, Alloy 360 ½ Hard.

Finish: Nickel plated

Solder Turret Terminals and Banana jacks: Brass, Alloy 360 ½ Hard

Finish: Bright tin plated.

Molded Housing: Electrical grade Phenolic. Color: Black

Marking: "MODEL 2098 POMONA ELECTRONICS CALIF."

Cover: Phenolic Plate. Color: Black

Screws: 2 ea. #2-56 x (3/16") Pan HD. - Steel

RATINGS:

Operating Temperature: +150°C. (+302°F.) Max.

Current: 15 Amperes

All dimensions are in inches. Tolerances (except noted): .xx = ±.02" (.51 mm), .xxx = ±.005" (.127 mm).

All specifications are to the latest revisions. Specifications are subject to change without notice.

Registered trademarks are the property of their respective companies. Made in USA

Pomona[®]

Model 2098 Phenolic Box Component Mounting Banana Jack To Double Plug

ORDERING INFORMATION: Model 2098

All dimensions are in inches. Tolerances (except noted): .xx = $\pm .02$ " (.51 mm), .xxx = $\pm .005$ " (.127 mm).
All specifications are to the latest revisions. Specifications are subject to change without notice.
Registered trademarks are the property of their respective companies. Made in USA

6/9/99

SY/EH/LS

S:\Engineering\Release\DataSheets\FIukeDataSheet\d2098_1_01.doc

Sales: 800-4990-2361 Fax: 888-403-3360

Technical Assistance: 800-241-2060

PomonaACCESS 90126 (800) 444-6785 or (425) 446-6010

More drawings available at www.pomonaelectronics.com

Page 2 of 2