

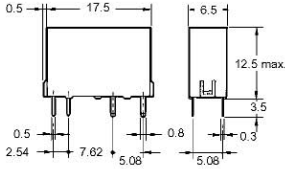


## Dimensions

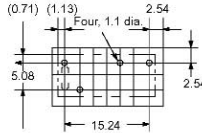
**Note:** 1. All units are in millimeters unless otherwise indicated.

2. Orientation marks are indicated as follows:  

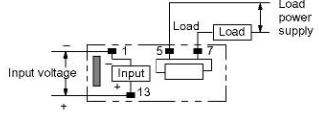
### G3DZ-2R6PL



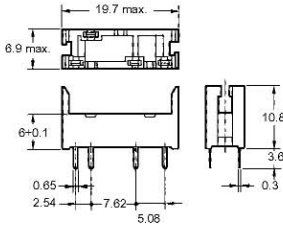
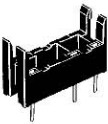
**Mounting Holes (Bottom View)**



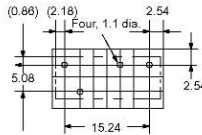
**Terminal Arrangement/ Internal Connections (Bottom View)**



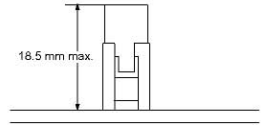
### P6D-04P Connecting Socket



**Mounting Holes (Bottom View)**

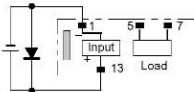


**Socket Mounting Height**



## Precautions

If any reversed surge voltage is imposed on the input terminals, insert a diode in parallel to the input terminals as shown in the following circuit diagram and do not impose a reversed voltage value of 3 V or more.



### Terminals

Since terminals are made of materials with high heat conduction, complete soldering (automatic or manual) within 10 seconds at a temperature of 260°C.

When fitting with a Socket, match properly and push straight down vertically.

**ALL DIMENSIONS SHOWN ARE IN MILLIMETRES.**

To convert millimetres into inches, multiply by 0.03937. To convert grams into ounces, multiply by 0.03527.