

IEC Appliance Inlet C14 with Filter, Fuseholder 1- or 2-pole

Plug removal necessary for fuse replacement



Typ 5220, Fuseholder 2-pole
Screw-On Version

Typ 5220, Fuseholder 2-pole
Snap-In Version



Description

- Panel Mount :
Snap-in or screw-on mounting from front side
- 3 Functions :
Appliance Inlet Protection class I , Fuseholder for fuse-links 5 x 20 mm 2-pole , Line filter in standard and medical version
- Quick connect terminals 6.3 x 0.8 mm

Unique Selling Proposition

- Ultra-compact design
- Recessed faston connectors
- High quality filter case made of stainless steel
- Highly resistant since potted filter

Approvals

- VDE Certificate Number: 101307
- UL File Number: E72928

Characteristics

- All single elements are already wired
- Plug removal necessary for fuse-link replacement
- Suitable for use in equipment according to IEC/UL 60950
- Suitable for use in medical equipment according to IEC/UL 60601-1

References

- Alternative: version without line filter [6220](#)
- Alternative: Standard version

Weblinks

[pdf datasheet](#), [html-datasheet](#), [General Product Information](#), [RoHS](#), [CHINA-RoHS](#), [REACH](#), [Distributor-Stock-Check](#), [Accessories](#), [Detailed request for product](#)

Technical Data

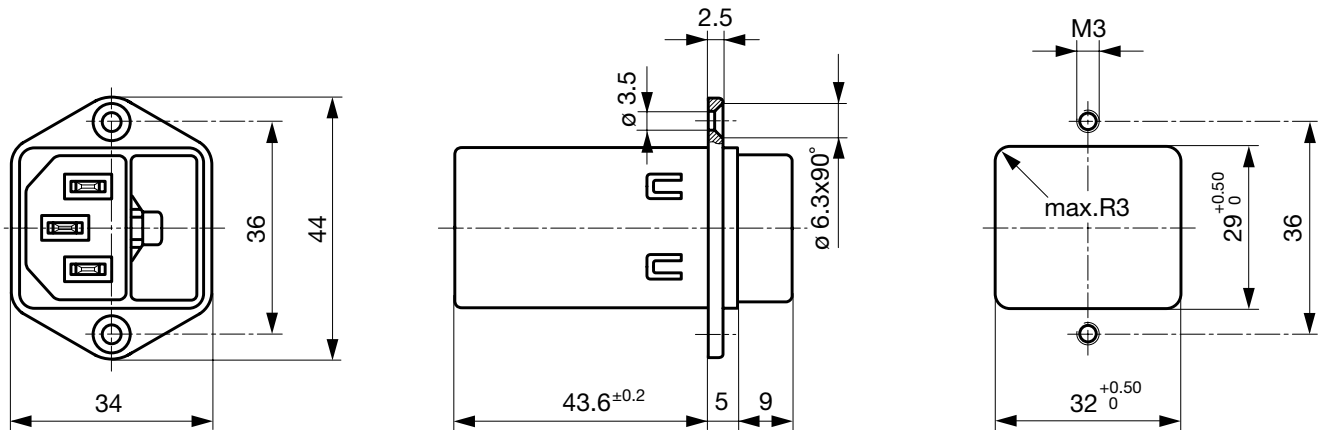
| | |
|---------------------------------|--|
| Ratings IEC | 1 - 10A @ Ta 40 °C / 250 VAC; 50Hz |
| Ratings UL/CSA | 1 - 10A @ Ta 40 °C / 125 VAC; 60Hz |
| Leakage Current | standard < 0.5 mA (250 V / 60Hz) medical < 5 µA (250 V / 60 Hz) |
| Dielectric Strength | > 1.7 kVDC between L-N > 2.7 kVDC between L/N-PE Test voltage (2 sec) |
| Allowable Operation Temperature | -25 °C to 85 °C |
| Climatic Category | 25/085/21 acc. to IEC 60068-1 |
| IP-Protection | from front side IP 40 acc. to IEC 60529 |
| Protection Class | Suitable for appliances with protection class I acc. to IEC 61140 |
| Terminal | Quick connect terminals 6.3 x 0.8 mm |
| Panel Thickness s | Screw: max 8 mm Mounting screw torque max 0.5 Nm Snap-in: 0.8 mm to 3 mm |
| Material: Housing | Thermoplastic, black, UL 94V-0 |

| | |
|-----------------------------------|--|
| appliance inlet/-outlet | C14 acc. to IEC 60320-1, UL 498, CSA C22.2 no. 42 (for cold conditions) pin-temperature 70 °C, 10A, Protection Class I |
| Fuseholder | 2-pole, Shocksafe category PC2 acc. to IEC 60127-6, for fuse-links 5 x 20 mm |
| Rated Power Acceptance @ Ta 23 °C | 5 x 20: 1.6W (2-pole) |
| Power Acceptance @ Ta > 23°C | Admissible power acceptance at higher ambient temperature see derating curves |
| Line Filter | Standard and Medical Version, IEC 60939, UL 1283, CSA C22.2 no. 8 Technical Details |
| MTBF | > 2'300'000h acc. to MIL-HB-217 F |

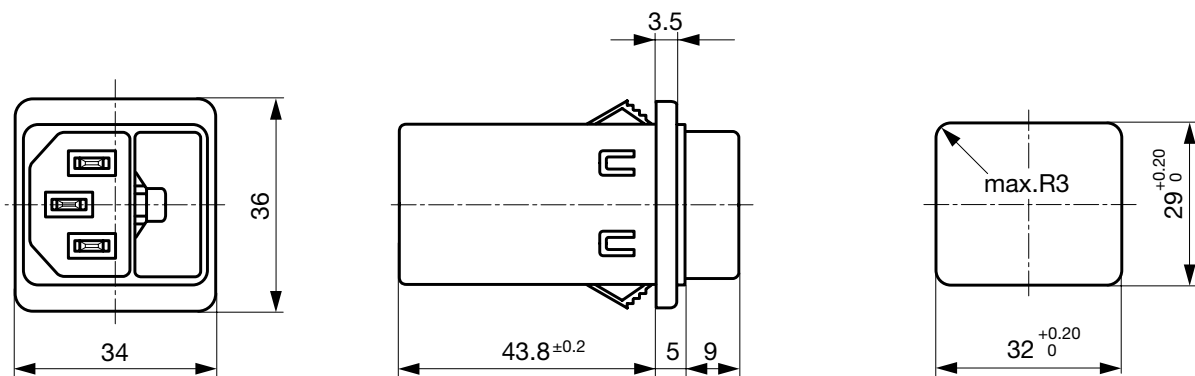
Detailed information on product approvals, code requirements, usage instructions and detailed test conditions can be looked up in [General Product Information](#)

Dimension

Screw-on mounting type 5220



Snap-in mounting type 5220

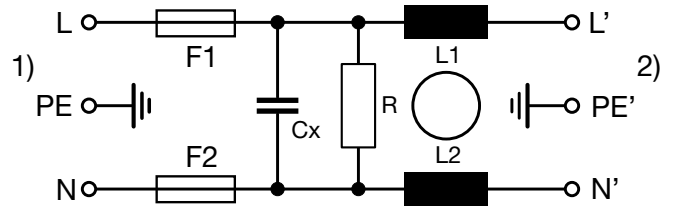
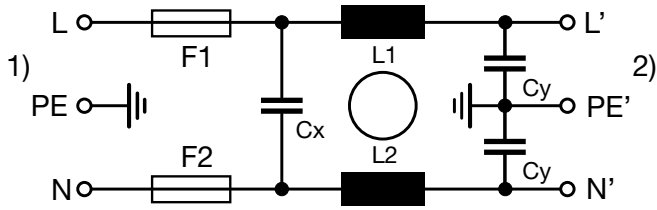
**Technical Data of Filter-Components**

| Rated Current [A] | Filter-Type | Inductances L [mH] | Capacitance CX [nF] | Capacitance CY [nF] | R [MΩ] |
|-------------------|------------------------------|--------------------|---------------------|---------------------|--------|
| 1 | Standard Version | 2 x 11 | 47 | 2.2 | - |
| 2 | Standard Version | 2 x 4 | 47 | 2.2 | - |
| 4 | Standard Version | 2 x 1.6 | 47 | 2.2 | - |
| 6 | Standard Version | 2 x 0.7 | 47 | 2.2 | - |
| 8 | Standard Version | 2 x 0.6 | 47 | 2.2 | - |
| 10 | Standard Version | 2 x 0.4 | 47 | 2.2 | - |
| 1 | Medical Version (M5) | 2 x 11 | 47 | - | 1 |
| 2 | Medical Version (M5) | 2 x 4 | 47 | - | 1 |
| 4 | Medical Version (M5) | 2 x 1.6 | 47 | - | 1 |
| 6 | Medical Version (M5) | 2 x 0.7 | 47 | - | 1 |
| 8 | Medical Version (M5) | 2 x 0.6 | 47 | - | 1 |
| 10 | Medical Version (M5) | 2 x 0.4 | 47 | - | 1 |
| 10 | Standard and Medical Version | 2 x 11 | 47 | 2.2 | 1 |

Diagrams

5220 Standard version

5220 Medical version

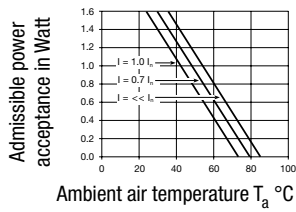


1) Line
2) Load

1) Line
2) Load

Derating Curves

2-pole



Attenuation Loss

----- 50Ω differential mode _____ 50Ω common mode

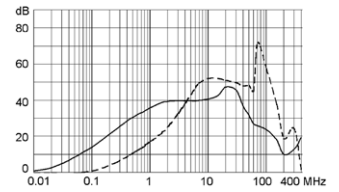
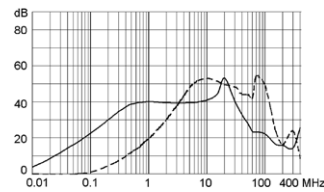
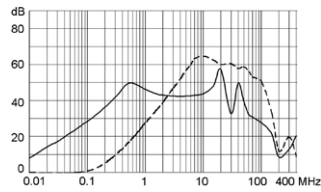
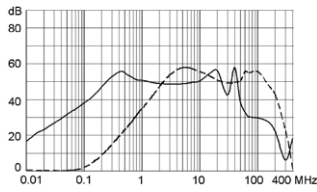
Standard version

1 A

2 A

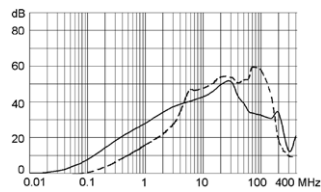
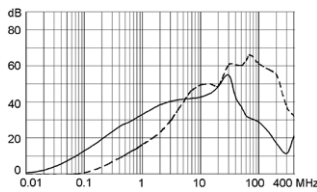
4 A

6 A



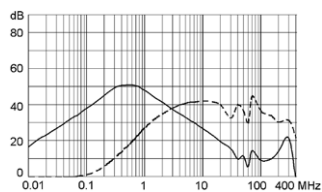
8 A

10 A

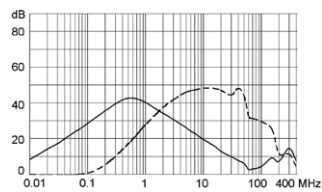


Medical version (M5)

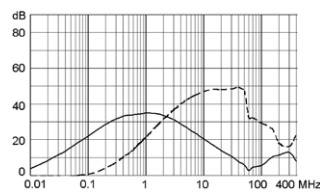
1 A



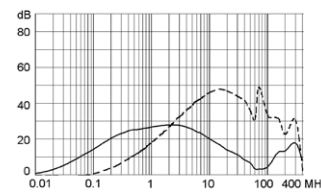
2 A



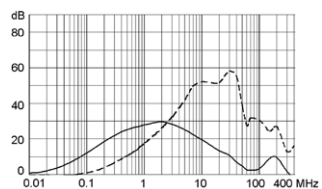
4 A



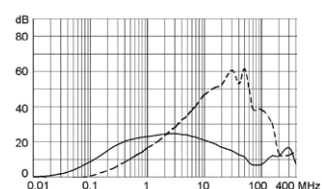
6 A



8 A



10 A



All Variants

| Rated Current [A] | Filter-Type | Panel mounting | Fuseholder | Order Number |
|-------------------|----------------------|----------------|------------|--------------|
| 1 | Standard Version | Snap-in | 2-pole | 5220.0143.1 |
| 2 | Standard Version | Snap-in | 2-pole | 5220.0243.1 |
| 4 | Standard Version | Snap-in | 2-pole | 5220.0443.1 |
| 6 | Standard Version | Snap-in | 2-pole | 5220.0643.1 |
| 8 | Standard Version | Snap-in | 2-pole | 5220.0843.1 |
| 10 | Standard Version | Snap-in | 2-pole | 5220.1043.1 |
| 1 | Standard Version | Screw | 2-pole | 5220.0123.1 |
| 2 | Standard Version | Screw | 2-pole | 5220.0223.1 |
| 4 | Standard Version | Screw | 2-pole | 5220.0423.1 |
| 6 | Standard Version | Screw | 2-pole | 5220.0623.1 |
| 8 | Standard Version | Screw | 2-pole | 5220.0823.1 |
| 10 | Standard Version | Screw | 2-pole | 5220.1023.1 |
| 1 | Medical Version (M5) | Snap-in | 2-pole | 5220.0143.3 |
| 2 | Medical Version (M5) | Snap-in | 2-pole | 5220.0243.3 |
| 4 | Medical Version (M5) | Snap-in | 2-pole | 5220.0443.3 |
| 6 | Medical Version (M5) | Snap-in | 2-pole | 5220.0643.3 |
| 8 | Medical Version (M5) | Snap-in | 2-pole | 5220.0843.3 |
| 10 | Medical Version (M5) | Snap-in | 2-pole | 5220.1043.3 |
| 1 | Medical Version (M5) | Screw | 2-pole | 5220.0123.3 |
| 2 | Medical Version (M5) | Screw | 2-pole | 5220.0223.3 |
| 4 | Medical Version (M5) | Screw | 2-pole | 5220.0423.3 |
| 6 | Medical Version (M5) | Screw | 2-pole | 5220.0623.3 |
| 8 | Medical Version (M5) | Screw | 2-pole | 5220.0823.3 |
| 10 | Medical Version (M5) | Screw | 2-pole | 5220.1023.3 |

 Most Popular.

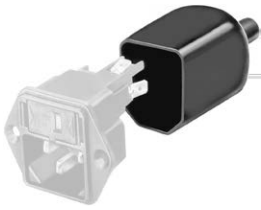
Availability for all products can be searched real-time: <http://www.schurter.com/en/Stock-Check/Stock-Check-SCHURTER>

Packaging unit

10 Pcs

Accessories

Description



Assorted Covers
Rear Cover

0859.0047



Cord retaining kits
Cord retaining strain relief

Countersunk, B

4700.0002

Mating Outlets/Connectors

Category / Description

Appliance Outlet Overview complete



| | |
|---|------|
| IEC Appliance Outlet F, Screw-on Mounting, Front Side, Solder Terminal | 4787 |
| IEC Appliance Outlet F, Snap-in Mounting, Front Side, Solder or Quick-connect Terminal | 4788 |
| IEC Appliance Outlet F or H, Screw-on Mounting, Front Side, Solder, PCB or Quick-connect Terminal | 5091 |

Appliance Outlet further types to 5220

Connector Overview complete



| | |
|--|---------|
| 4782 Mounting: Power Cord, 3 x 1 mm ² / 3 x 18 AWG, Cable, Connector: IEC C13 | 4782 |
| 4022 Mounting: Power Supply Cord, 3 x 1.5 mm ² , Screw clamps, Connector: IEC C13 | 4022 |
| 4785 Mounting: Power Cord, 3 x 1 mm ² / 3 x 18 AWG, Cable, Connector: IEC C13 | 4785 |
| 4300-06 Mounting: Power Cord, 3 x 1 mm ² / 3 x 18 AWG, Cable, Connector: IEC C13 | 4300-06 |
| 4012 Mounting: Power Supply Cord, 3 x 1.5 mm ² , Screw clamps, Connector: IEC C13 | 4012 |

Connector further types to 5220

...