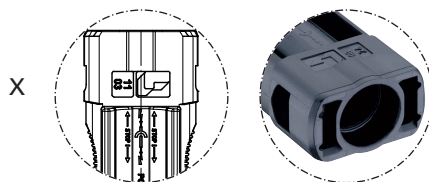
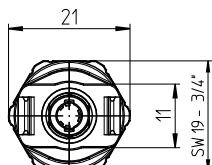
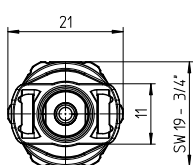
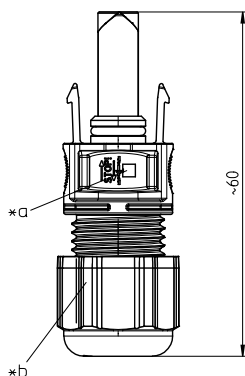
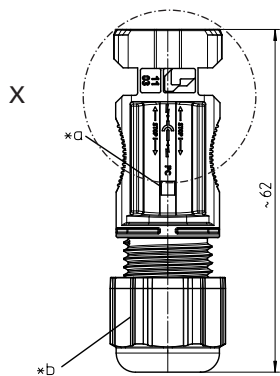




LC4-CP 30



LC4-CP 31



LC4-CP 30 IT

*a marking + on LC4-CP 3...-1, - on LC4-CP 3...-2
*b hexagonal cap nut

LC4-CP 30
LC4-CP 31

LC4® photovoltaic connector, field-attachable, with integrated locking and crimp contact

LC4-CP 30: plug

LC4-CP 31: socket

1. Temperature range -40 °C/+85 °C (IEC)
-40 °C/+90 °C (UL)
(+115 °C upper limit temperature)

2. Materials halogen-free, UV-resistant
Insulating body m-PC, V1 according to UL 94
Contact pin/bush CuNiSi, tin-plated
Sealing (sockets only) silicone
Cap nut PA GF, V0 according to UL 94

3. Mechanical data
Insertion force¹ ≤ 20 N
Withdrawal force¹ ≥ 10 N
Retaining force of locking latches² ≥ 90 N
Mating cycles² 50
Tightening torque cap nut 1,4 ± 0,2 Nm
Mating with photovoltaic connectors LC4
Protection degree³ IP 68

Connectable conductors crimp terminal
Photovoltaic cable, double-insulated⁴
Section LC4-CP 3... 2.5 2.5 mm² (AWG 14)
Section LC4-CP 3... 4.0 4.0 mm² (AWG 12)
Section LC4-CP 3... 6.0 6.0 mm² (AWG 10)
Cable diameter 5.3-8.5 mm
5.5-7.8 mm (TÜV)
6.3-7.8 mm (UL)

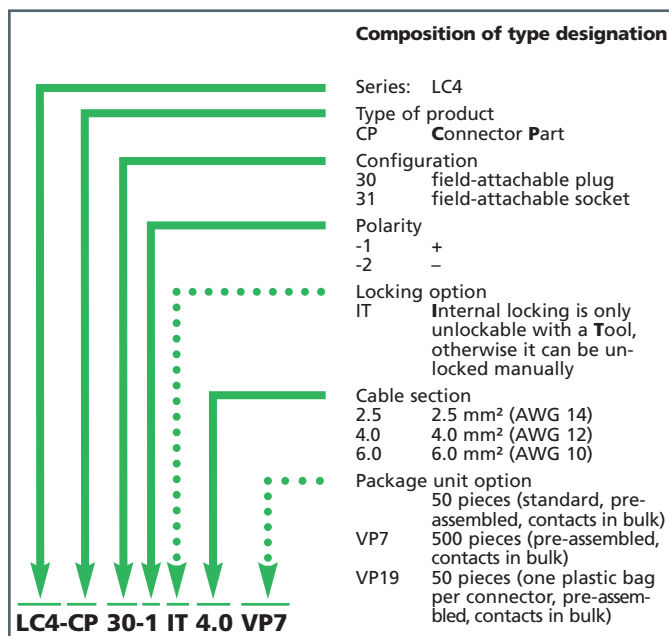
Examples of recommended cables on the Internet site www.lumberg.com

4. Elektrische Daten (at T_{amb} 20 °C)
Contact resistance² ≤ 1 mΩ
Rated current (IEC)²
LC4-CP 3... 2.5 22 A at T_{amb} 85 °C
LC4-CP 3... 4.0 and 6.0 30 A at T_{amb} 85 °C
Rated current (UL)² 35 A at T_{amb} 20 °C, all sections
Rated voltage⁵ 1000 V DC (IEC)/600 V DC (UL)
Overvoltage category⁵ III (8 kV)
Material group⁵ IIIa (IEC)/3 (UL) (CTI > 225)
Creepage distance/Clearance between
contact and touchable surfaces 24.6 mm
contact and cable outlet 22.8 mm
Isolationswiderstand > 10 GΩ

¹ measured with a polished steel gauge, nominal thickness 4.0 mm
² measured with a proper counterpart
³ according to IEC 60529/DIN EN 60529
only in mated condition with a proper counterpart
⁴ IP X8 requirements under agreement between manufacturer and user
wire construction preferably according to IEC 60228 class 5, for more
details see separate data sheet on request
⁵ according to DIN EN 60664/IEC 60664 resp. according to ANSI/UL 746A



Composition of type designation



Standard packaging: pre-assembled, contacts in bulk, sorted in plastic bags of 50 pieces, in a cardboard box