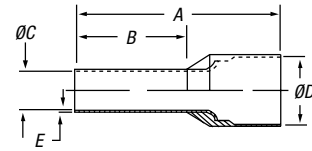


Ferrules

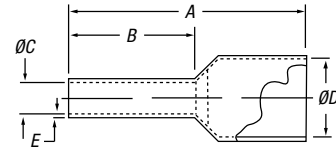
Insulated Twin Ferrules



CAT. NO.	CONDUCTOR SECTION		COLORS	DIMENSIONS INCHES/MM					INSTALLATION TOOLING	PKG. QTY.
	AWG	MM		A	B	ØC	ØD	E		
F8000	2x 20	2x 0.50	White	.591/15.0	.315/8.0	.059/1.5	.177/4.5	.010/.25	T3	500
F8001	2x 18	2x 0.75	Gray	.591/15.0	.315/8.0	.071/1.8	.201/5.1	.010/.25	T3	500
F8002	2x 18	2x 0.75		.669/17.0	.394/10.0	.071/1.8	.201/5.1	.006/.15	T3	500
F8003	2x 17	2x 1.00	Red	.591/15.0	.315/8.0	.081/2.05	.201/5.1	.006/.15	T3	500
F8005	2x 17	2x 1.00		.669/17.0	.394/10.0	.081/2.05	.201/5.1	.006/.15	T3	500
F8006	2x 16	2x 1.50	Black	.630/16.0	.315/8.0	.091/2.3	.252/6.4	.006/.15	T3	500
F8007	2x 16	2x 1.50		.787/20.0	.472/12.0	.091/2.3	.252/6.4	.006/.15	T3	500
F8008	2x 14	2x 2.50	Blue	.728/18.5	.394/10.0	.114/2.9	.295/7.5	.006/.15	T3	500
F8009	2x 14	2x 2.50		.846/21.5	.512/13.0	.114/2.9	.295/7.5	.006/.15	T3	500
F8010	2x 12	2x 4.00	Gray	.906/23.0	.472/12.0	.150/3.8	.339/8.6	.006/.15	ERG4/6MM DIE	100
F8011	2x 10	2x 6.00	Yellow	.984/25.0	.551/14.0	.193/4.9	.378/9.6	.008/.20	ERG4/10MM DIE	100

Ferrule dimensions conform to DIN 46228, Part 4.

Insulated Ferrules (Old DIN and French Standards)



CAT. NO.	STYLE	CONDUCTOR SECTION			DIMENSIONS INCHES/MM					INSTALLATION TOOLING	PKG. QTY.
		AWG	MM	COLORS	A	B	ØC	ØD	E		
F4000	OLD DIN	20	0.50	Orange	.571/14.5	.315/8.0	.043/1.1	.102/2.6	.006/.15	T1, T3 & ERG4	500
F4001	OLD DIN	18	0.75	White	.571/14.5	.315/8.0	.051/1.3	.110/2.8	.006/.15	T1, T3 & ERG4	500
F4002	OLD DIN	18-17	1.00	Yellow	.571/14.5	.315/8.0	.059/1.5	.118/3.0	.006/.15	T1, T3 & ERG4	500
F4003	OLD DIN	16	1.50	Red	.571/14.5	.315/8.0	.071/1.8	.134/3.4	.006/.15	T1, T3 & ERG4	500
F4020	OLD DIN	14	2.50	Blue	.571/14.5	.315/8.0	.091/2.3	.165/4.2	.006/.15	T1, T3 & ERG4	500
F4021	FRENCH	20	0.50	White	.571/14.5	.315/8.0	.043/1.1	.102/2.6	.006/.15	T1, T3 & ERG4	500
F4023	FRENCH	18	0.75	Lt. Blue	.571/14.5	.315/8.0	.051/1.3	.110/2.8	.006/.15	T1, T3 & ERG4	500
F4024	FRENCH	18-17	1.00	Red	.571/14.5	.315/8.0	.059/1.5	.118/3.0	.006/.15	T1, T3 & ERG4	500
F4027	FRENCH	16	1.50	Black	.571/14.5	.315/8.0	.071/1.8	.134/3.4	.006/.15	T1, T3 & ERG4	500
F4028	FRENCH	14	2.50	Gray	.571/14.5	.315/8.0	.091/2.3	.165/4.2	.006/.15	T1, T3 & ERG4	500

Ferrule dimensions conform to DIN 46228, Part 4.

The crimping tools you need!

Tooling for Sta-Kon® Insulated Ferrules

CAT. NO.	DESCRIPTION	PKG. QTY.
T1	Sta-Kon® Crimp Tool for wire ferrules #20-#14 AWG — insulated handle.	1
T3	Sta-Kon® Crimp Tool for wire ferrules #26-#10 AWG — insulated handle.	1
ERG4	Comfort Crimp® Sta-Kon® Crimp Tool with Shure-Stake® mechanism, for installing wire ferrules #26-1/0 AWG. Four interchangeable die sets included. Insulated handle. Packaged in sturdy plastic carrying case.	1

