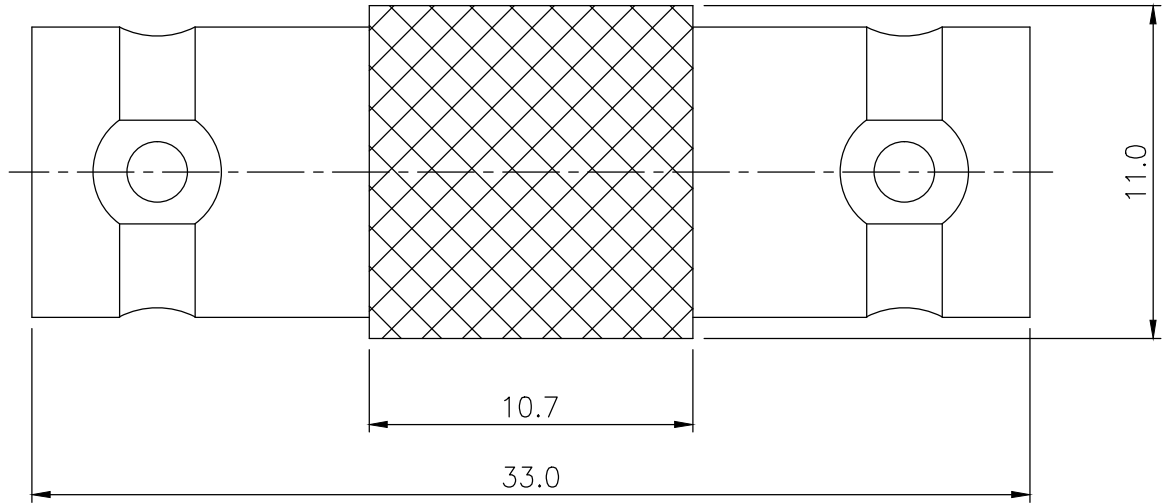


| | | | | | | |
|-----|----------|--------|------|-----------------|-----------------|-----------------|
| MCM | FILE NO. | 27-435 | REV. | DESCRIPTION | DRAWN / DATE | APPROVED / DATE |
| | | | 0 | INITIAL RELEASE | YANG 10/14/2014 | LISA 10/14/2014 |



SPECIFICATION:

1. Insulator Resistance: 5000MΩ Min. at DC 500V one minute
2. Contact Resistance: 4.3mΩ Max. at DC 0.2V, 1A
3. Dielectric withstanding voltage: 1500Vrms Min. at DC one minute
4. Test Temperature: 25±5°C

| | | | |
|---|-------------|----------------------|--|
| 3 | INSULATOR | POM | |
| 2 | CONTACT PIN | BRASS, GOLD-PLATED | |
| 1 | BODY | BRASS, NICKEL-PLATED | |

www.mcmelectronics.com

| | | | | | | | |
|-----------------------------|--|----------|---------------------------------------|-------------|------------|-----------------|-------|
| DIMENSIONS ARE IN mm [INCH] | TOLERANCES ARE FRACTIONS DECIMALS ANGLES | MATERIAL | BNC-Female to Female 50ohm Adapter | P/N | DRAWN YANG | DATE 10/14/2014 | |
| MOLD NO. | 0.5~6 ± 0.20 [0.008] 6~30 ± 0.40 [0.016] 30~120 ± 0.60 [0.024] | FINISH | | PROJECT NO. | | | |
| | | COLOR | | SCALE 4:1 | SIZE A4 | SHEET 1 OF 1 | MC068 |