



## INSTALLATION AND OPERATION MANUAL

### EZ-HK3 Audio/Video Hum Killer



RDL EZ Series products provide the highest level of value to A/V professionals and A/V users who demand professional quality. For long-term performance, quality and value, you have made the EZ choice. EZ products are made in the USA by RDL, the inventor of application-specific modules bringing decades of experience as the world's leading manufacturer of high-reliability performance products to the A/V industry. Visit the RDL website for hundreds of professional A/V products made in the USA by RDL.



[www.rdlnet.com](http://www.rdlnet.com)

**Decades of Performance, Quality and Value**

---

RDL • 659 6th Street • Prescott, AZ • USA 86301 • Sales: 800-281-2683 • 928-443-9391  
Tech Support: 800-933-1780 • 928-778-3554 • RDL Europe Sales & Support: (31) 20-6238-983

# EZ-HK3

## Audio/Video Hum Killer

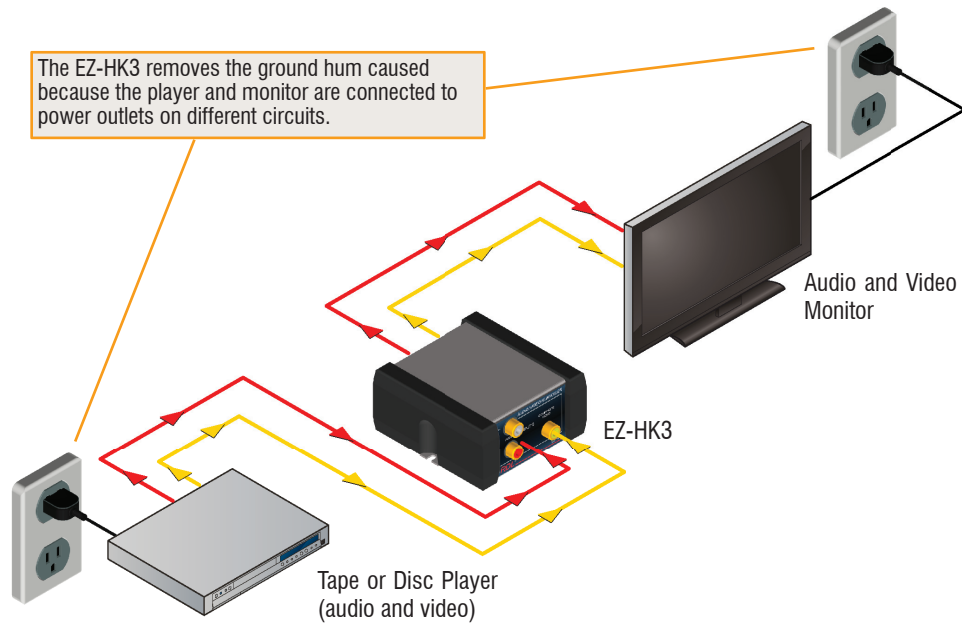
- Audio and Video Ground-Loop Hum Elimination
- Unbalanced Stereo Galvanic Isolation
- 75 Ohm Composite Video Galvanic Isolation
- Input and Output RCA Jacks
- Switch-Selectable Ground Lift for Output Jacks
- Portable Use or Permanent Installation

The EZ-HK3 is a stereo audio and composite video transformer isolation module for use with unbalanced, high impedance audio inputs and standard 75 ohm composite video. Input and output connections are provided on gold-plated RCA jacks.

The shield connection of each INPUT jack is electrically isolated from the case and from the output ground. The shield connection of each OUTPUT jack is connected to the case shield through a rear-panel ground-lift switch.

The EZ-HK3 eliminates hum due to ground loops when it is installed between an unbalanced audio/video source, such as a computer or DVD player, and the input of a grounded amplifier and video monitor or projector in an A/V system.

## TYPICAL APPLICATION



[www.rdlnet.com](http://www.rdlnet.com) . . . [www.rdlez.com](http://www.rdlez.com)

**STEREO AUDIO INPUTS**

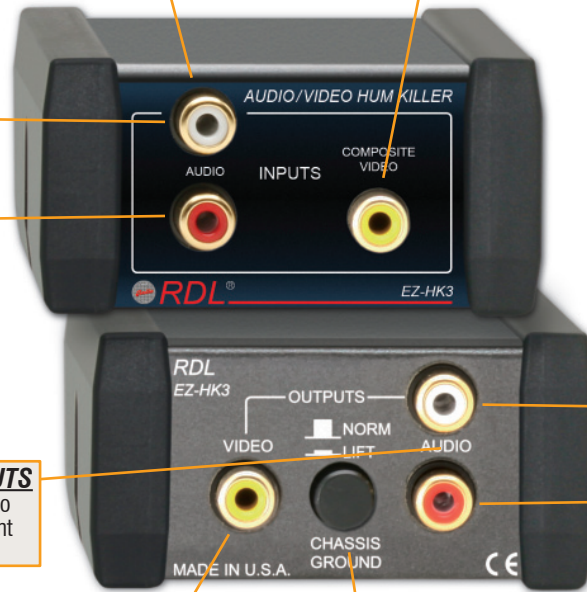
Connect the audio output from the audio/video source to the RCA jacks.

**COMPOSITE VIDEO INPUT**

Connect the video output from the audio/video source to the composite video input RCA jack.

Left

Right



**STEREO AUDIO OUTPUTS**

Connect the audio outputs to the A/V system or equipment audio input.

Left

Right

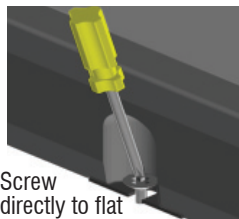
**COMPOSITE VIDEO OUTPUT**

Connect the video output to the A/V system or equipment video input.

**GROUND-LIFT SWITCH**

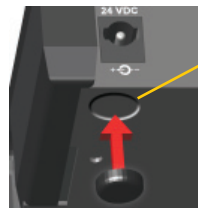
The audio and video output cable shields are connected to the EZ-HK3 chassis when the switch is in the NORM position. In the unlikely event that the EZ-HK3 chassis is mounted to equipment with a different ground from the equipment the EZ-HK3 output is feeding, a ground loop could be produced. This ground loop is eliminated by setting the switch to the LIFT position.

**FIXED MOUNTING**



Screw directly to flat surface without installing rubber feet.

**RUBBER FEET ATTACHMENT**



Recess

Bottom View of chassis

Peel backing and stick the 4 rubber feet to chassis in recesses provided.

## SELECTED MOUNTING ACCESSORIES Complete accessory listing available at: [rdlez.com](http://rdlez.com)

### EZ-RA6

Rack Adapter for 6 Increments of 1/6 Rack Width



### EZ-CC6

Component Chassis for 6 Increments of 1/6 Rack Width



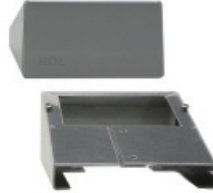
### EZ-SMB1

Surface Mount Bezel for 1/6 Rack Width Products



### EZ-DC1

Desktop Chassis 1/6 Rack Width



### EZ-UCB2

Under-Counter Brackets 1/6 or 1/3 Rack Width



### EZ-SD1

Storage Drawer 1/6 Rack Width

Use In Place of Filler Panel  
Holds Adapters and Cables  
Mounts in EZ-CC6 and EZ-RA6



## TYPICAL PERFORMANCE

Video Input:	Composite Video, 1 V p-p nominal, ground-isolated
Input Impedance:	75 $\Omega$
Video Output:	Composite Video, 1 V p-p nominal
Output Impedance:	75 $\Omega$
Video Bandwidth:	40 Hz to >5 MHz
Audio Input:	Stereo on RCA Phono jacks, -10 dBV nominal, ground-isolated
Audio Input Impedance:	10 k $\Omega$
Audio Output:	Stereo on RCA Phono jacks, -10 dBV nominal
Audio Output Impedance:	10 k $\Omega$
Audio Frequency Response:	20 Hz to 20 kHz (+/- 1 dB)
Audio Total Harmonic Distortion:	<0.05% (1 kHz)
Crosstalk (audio channel to channel):	<-75 dB (20 Hz to 10 kHz), <-65 dB (10 kHz to 20 kHz)
Crosstalk (video to audio):	<-80 dB (referred to -10 dBV)
Crosstalk (audio to video):	<-85 dB (referred to 1 V p-p)
Output Ground Isolation:	Switch-selectable (lifts audio and video grounds)
Gain (audio and video):	Unity nominal (passive circuit)
Warranty:	3 Years; contact RDL technical support department for assistance
Case dimensions:	2.9" (7.4 cm)W x 3" (7.6 cm)D
Mounting size:	1/6 rack width

CE

891-1650