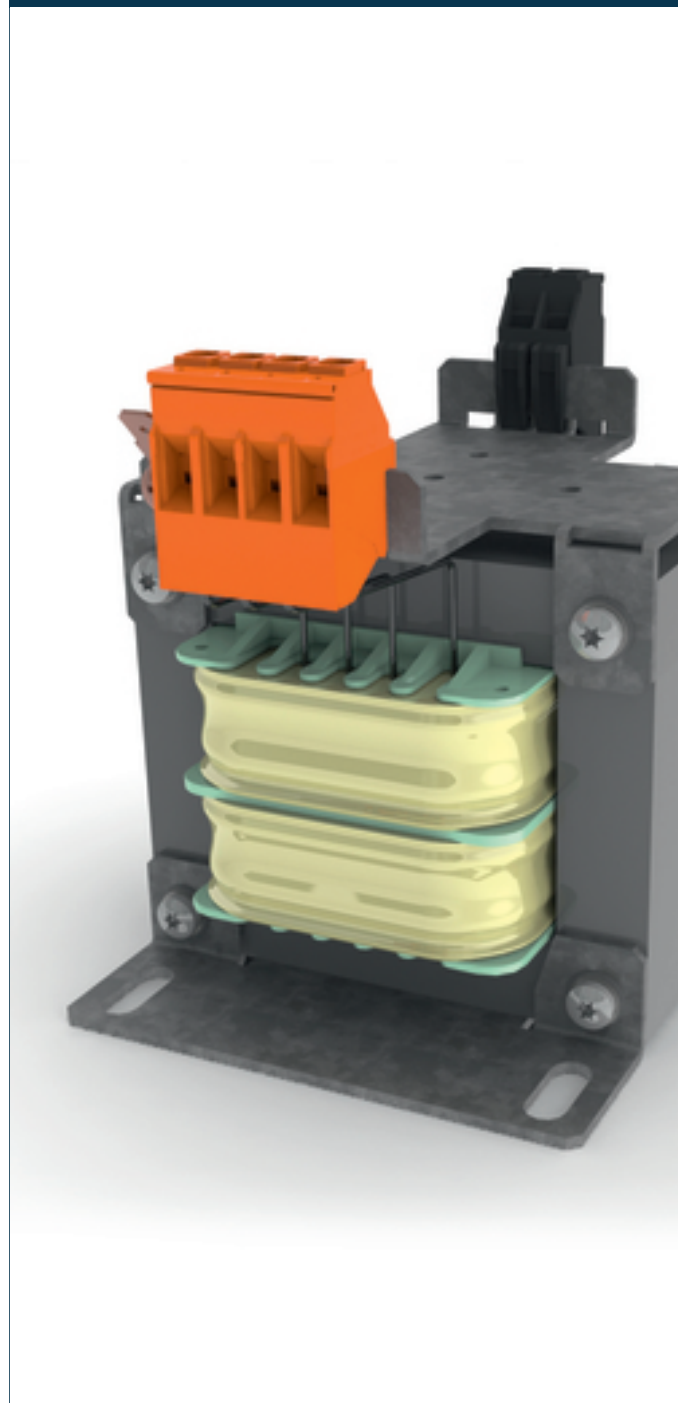


## Separating transformer CT-010-060-12-0



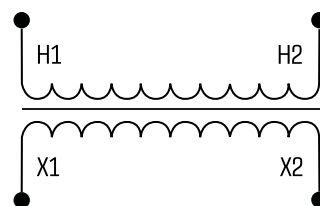
### Advantages

Fused versions available
Versions with DIN rail for additional components available
100 % finger-safe
Jumpers included for primary voltage selection
Impregnated for max. protection
Up to 2500 VA

### Applications

As an industrial control transformer for adjustment of the voltage and simple electrical isolation.

### Sample application



### Standards

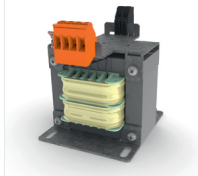


Separating transformer  
to: EN 61558 part 1 with part 2-1, UL 5085-1/-2;2:2, CSA 22.2 No. 66

### Approvals



UL 5085-1/-2, CSA 22.2 No.66



## Separating transformer CT-010-060-12-0

Electrical data	
Type	CT-010-060-12-0
Special features	
Characteristics	-
Input	
Rated input voltage	600 Vac
	0.2 Aac
Frequency Range	50 - 60 Hz
Output	
Rated output voltage	120 Vac
Power	100 VA
No-load voltage (app. x factor)	1.13
Efficiency	84 %
Standards	
Classification	Separating transformer
Approvals	
Approvals	cURus
Environment	
Ambient temperature	max. 104 °F
Type of cooling	Air natural
Safety and protection	
Type	Open type
Insulation class	B, class 130
Protection index	IP 00
Safety class (prepared)	I
Short circuit strength	non-short-circuit proof
Core	EI 78/36,5

Mechanical data	
Type	CT-010-060-12-0
Measures and weights	
Weight	3.31 lbs
Dimensions in inch	

Subject to change.