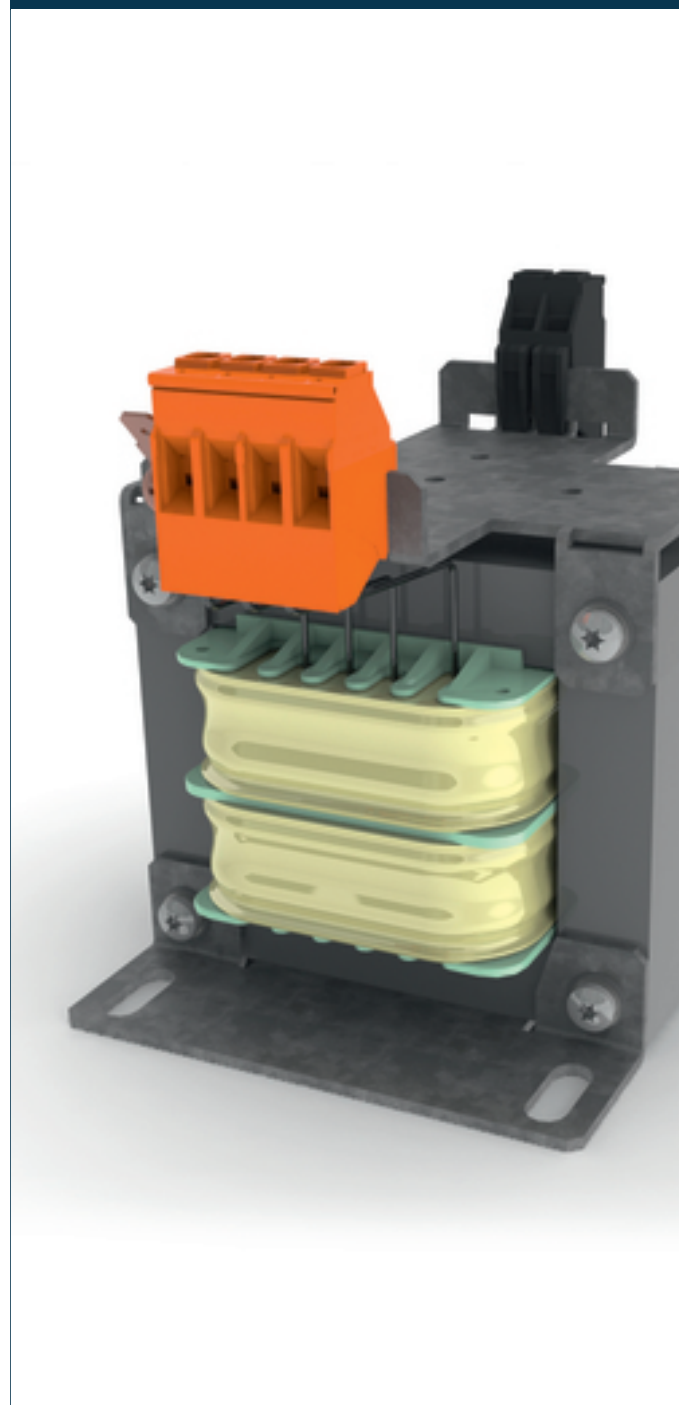


Separating transformer CT-005-048-24-0



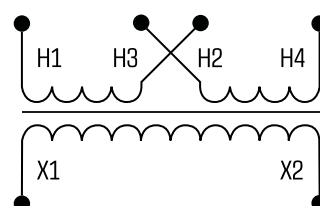
Advantages

Fused versions available
Versions with DIN rail for additional components available
100 % finger-safe
Jumpers included for primary voltage selection
Impregnated for max. protection
Up to 2500 VA

Applications

As an industrial control transformer for adjustment of the voltage and simple electrical isolation.

Sample application



Standards

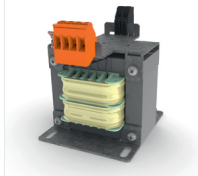


Separating transformer
to: EN 61558 part 1 with part 2-1, UL 5085-1/-2;2:2, CSA 22.2 No. 66

Approvals



UL 5085-1/-2, CSA 22.2 No.66



Separating transformer CT-005-048-24-0

Electrical data	
Type	CT-005-048-24-0
Special features	
Characteristics	-
Input	
Rated input voltage	240 x 480 Vac
	2 x 0.13 Aac
Frequency Range	50 - 60 Hz
Output	
Rated output voltage	24 Vac
Power	50 VA
No-load voltage (app. x factor)	1.13
Efficiency	81 %
Standards	
Classification	Separating transformer
Approvals	
Approvals	cURus
Environment	
Ambient temperature	max. 104 °F
Type of cooling	Air natural
Safety and protection	
Type	Open type
Insulation class	B, class 130
Protection index	IP 00
Safety class (prepared)	I
Short circuit strength	non-short-circuit proof
Core	EI 66/34,7

Mechanical data	
Type	CT-005-048-24-0
Measures and weights	
Weight	2.20 lbs
Dimensions in inch	

Subject to change.