



**BJB**

# Lampholders for compact fluorescent lamps

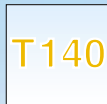
## General information



All articles in this catalogue have been designed according to the appropriate national and international standard (VDE / IEC). The choice of product and correct technical embodiment is the sole responsibility of the user. Further information available on request. We reserve the right to modify products.

Where no electrical rating is stated then, fluorescent lampholders and starter lampholders are designed for 250V / 2 A, according to IEC 60400/ VDE 0615 Part 3. When regulations deviate from IEC, e.g. UL, other ratings may be possible.

Please also note the general information at the beginning of this catalogue and the directions for use.

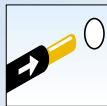


### Temperature rating T 140

The maximum operating temperature is given by a T-marking. This is the maximum operating temperature for which the lampholder is designed.



### Twin push wire terminals



### Single push wire terminals



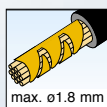
**Lean Form** - The lampholders have an extremely thin form, resulting in:

- better thermal conditions, e.g. for cables;
- assembly advantages due to increased room for routing cables
- improved and cost effective assembly due to new assembly method possibilities



### For tinned wire ends within the cross sectional range stated

When regulations deviate from IEC, other cross sections are possible (e.g. UL/CSA: 18 AWG)



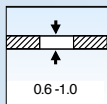
### For wire ends with ferrule to the maximum diameter stated

The cable and termination used must be compatible in respect of:  
Diameter and length of the ferrule, strip length of insulation  
For further information see DIN 46228, part 3, size 1 - 7

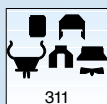


### For solid conductors within the cross sectional range stated.

When regulations deviate from IEC, other cross sections are possible (e.g. UL/CSA: 18 AWG)



### Material thickness, in mm



Accessories e.g. supports for lamps can be found on page ...



CAD-drawing, DXF format, on CD-ROM

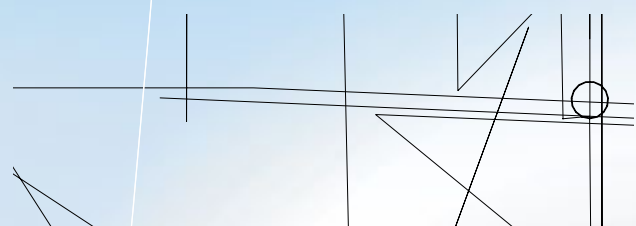


### Additional Information

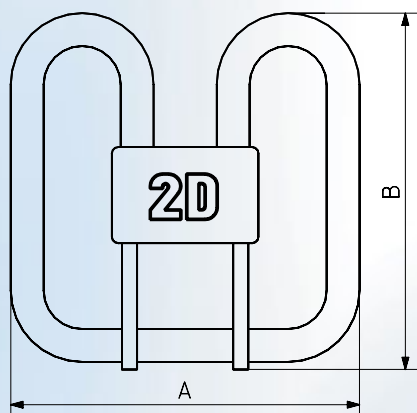
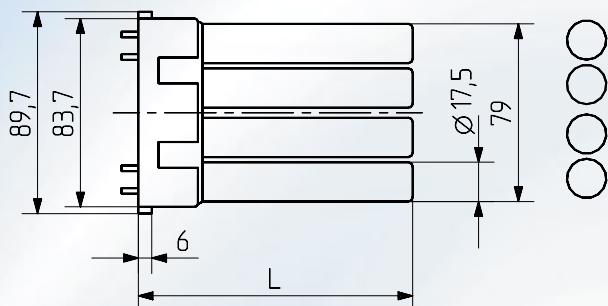
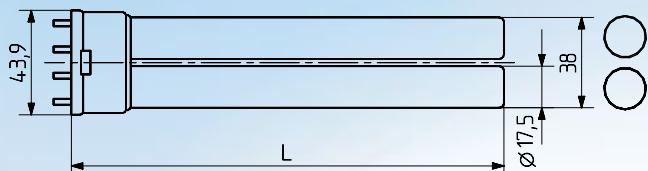
Further information about the products shown on this page can be found on pages 300....

The information and values stated here are for quick reference only. For specific information please contact the relevant lamp manufacturer.

Lamp base / standard	Wattage - W -	Lamp length - mm -		Lampholder / standard	Lampholders see page
		L1	L		
<b>G 23</b> IEC 60061-1 7004-69	5	85	108	<b>G 23</b> IEC 60061-2 7005-69	301 - 306
	7	115	138		
	9	145	168		
	11	215	238		
<b>GX 23</b> IEC 60061-1 7004-86	13	170	193	<b>GX 23</b> IEC 60061-2 7005-86	307 - 309
<b>2 G 7</b> IEC 60061-1 7004-102	5		85	<b>2 G 7</b> IEC 60061-2 7005-102	321 - 322
	7		115		
	9		145		
	11		215		



The information and values stated here are for quick reference only. For specific information please contact the relevant lamp manufacturer.



Lamp base / standard	Wattage - W -	Lamp length - mm - L		Lamp holder / standard	Lampholder see page
<b>2 G 11</b> IEC 60061-1 7004-82	18		225	<b>2 G 11</b> IEC 60061-2 7005-82	325 - 329
	24		320		
	36		415		
	40		535		
	55		535		
<b>2 G 10</b> IEC 60061-1 7004-118	18		122	<b>2 G 10</b> IEC 60061-2 7005-118	333
	24		165		
	36		217		
<b>GR 8</b> IEC 60061-1 7004-68	16 28	A - mm -	B - mm -	<b>GR 8</b> IEC 60061-2 7005-68	335
		138 205	141 207		
<b>GR 10 q</b> IEC 60061-1 7004-77	10	92	95	<b>GR 10 q</b> IEC 60061-2 7005-77	337
	16	138	141		
	21	138	141		
	28	205	207		
	38	205	207		
<b>GRY 10 q-3</b>	55	205	207	<b>GRY 10 q-3</b>	338

The information and values stated here are for quick reference only. For specific information please contact the relevant lamp manufacturer.

Lamp base / standard	Wattage - W -	Lamp length			Lampholder / standard	Lampholders see pages
		L1	L (d)	L (q)		
<b>G 24</b>	10	95		111	<b>G 24</b>	313 - 319
IEC	13	130		146	IEC	
60061-1	18	150		166	60061-2	
7004-78	26	170		186	7005-78	