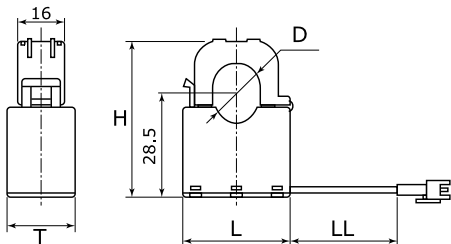


KEMET, C/CT



General Information	
Series:	C/CT
Type:	Current Sensors
Style:	Split-Core
Description:	High Alternating Current Sensor
Features:	High Performance, Compact, Slim, Flame Retardant
Lead:	Cable Connector
RoHS:	Yes

Dimensions	
D	16mm
L	36.7mm
H	43mm
T	23mm
LL	140mm

Specifications	
Temperature Range:	-20/+60C
Voltage DC:	1000 mV (Output, +/- 20 mV), 7.5 V (Output Protection)
Current:	120 Amps (50Hz/60Hz)
Miscellaneous:	Current Transformation Ratio = 3,000. Insulation Resistance = 500 VDC To 100 MOhms. Storage Temperature = -20/+80C

Packaging Specifications	
Packaging:	Bulk, Box
Packaging Quantity:	108