

ACT20M ACT20M-RTI-AO-E-S

Weidmüller Interface GmbH & Co. KG
 Klingenbergstraße 16
 D-32758 Detmold
 Germany
 Fon: +49 5231 1429-0
 Fax: +49 5231 14292083
 www.weidmueller.com



ACT20M: The slim solution

- Safe and space-saving (6 mm) isolation and conversion
- Quick installation of the power supply unit using the CH20M mounting rail bus
- Easy configuration via DIP switch or FDT/DTM software
- Extensive approvals such as ATEX, IECEx, GL, DNV
- High interference resistance

General ordering data

Type	ACT20M-RTI-AO-E-S
Order No.	1375520000
Version	Temperature converter, 2-/3-/4- wire RTD, Input : Temperature, Output : I / U
GTIN (EAN)	4050118259681
Qty.	1 pc(s).

ACT20M
ACT20M-RTI-AO-E-S

Weidmüller Interface GmbH & Co. KG
 Klingenbergstraße 16
 D-32758 Detmold
 Germany
 Fon: +49 5231 1429-0
 Fax: +49 5231 14292083
 www.weidmueller.com

Technical data
Dimensions and weights

Width	6.1 mm	Width (inches)	0.24 inch
Height	112.5 mm	Height (inches)	4.429 inch
Depth	114.3 mm	Depth (inches)	4.5 inch
Net weight	86 g		

Temperatures

Humidity	95 %, no condensation	Operating temperature	
Ambient temperature	-25 °C...+70 °C	Storage temperature	-40 °C...85 °C

Probability of failure

MTBF	195 Years
------	-----------

Input

Number of inputs	1	Sensor	PT100 / 2-/3-/4-wire
Influence of the sensor cable resistance	< 0.002 Ω/Ω (@ 3/4-wire)	Input measurement range	PT100 -200...+850 °C
Line resistance in measuring circuit	≤ 50 Ω	Temperature input range	Configurable, min. measurement range 10°C (RTD)

Output

Number of outputs	1	Output signal limit	< 4 mA (average), < 60 mA (pulse current), low duty cycle
Output voltage, note	configurable, 0(2)...10 V, 0(1)...5 V	Output current	configurable, 0...20 mA, 4...20 mA
Wire break detection	3.5 mA/ 23 mA/ none	load impedance voltage	≥ 10 kΩ
load impedance current	≤ 600 Ω		

General data

Accuracy	absolute accuracy: < ±0.1 % of the measurement range	Configuration	DIP switch
Galvanic isolation	Without isolation	Mounting rail	TS 35
Power consumption, max.	0.5 W	Power consumption, typ.	0.37 W
Step response time	≤ 30 ms, < 300 ms	Supply voltage	24 V DC ± 30 %
Temperature coefficient	≤ 0.01 % of the measurement range/°C or 0.02 °C/°C		

Insulation coordination

EMC standards	IEC 61326-1, NE 21	Galvanic isolation	Without isolation
Pollution severity	2	Standards	IEC 61010-1

Data for Ex applications (ATEX)

Marking	II 3 G Ex nA IIC T4 Gc
---------	------------------------

Data sheet

ACT20M ACT20M-RTI-AO-E-S

Weidmüller Interface GmbH & Co. KG
 Klingenbergstraße 16
 D-32758 Detmold
 Germany
 Fon: +49 5231 1429-0
 Fax: +49 5231 14292083
 www.weidmueller.com

Technical data

Connection data

Type of connection	Screw connection	Tightening torque, min.	0.4 Nm
Tightening torque, max.	0.6 Nm	Clamping range, rated connection	2.5 mm ²
Clamping range, rated connection, min.	0.5 mm ²	Clamping range, rated connection, max.	2.5 mm ²
Wire connection cross section AWG, min.	AWG 30	Wire connection cross section AWG, max.	AWG 14

Rated data UL

UL certificate	E337701.pdf
----------------	-------------

Ratings IECEx/ATEX/cUL

Certificate No. (ATEX)	KEMA10ATEX0183X	Certificate No. (IECEX)	IECEXKEM10.0090X
------------------------	-----------------	-------------------------	------------------

Classifications

ETIM 5.0	EC002653	ETIM 6.0	EC002919
eClass 6.2	27-21-01-20	eClass 7.1	27-21-01-20
eClass 8.1	27-21-01-20	eClass 9.0	27-21-01-20
eClass 9.1	27-21-01-29		

Product information

Descriptive text accessories	DIN mounting rail, see accessories
------------------------------	------------------------------------

Approvals

Approvals



ROHS	Conform
------	---------

Downloads

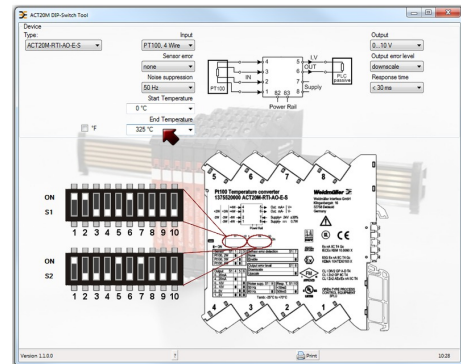
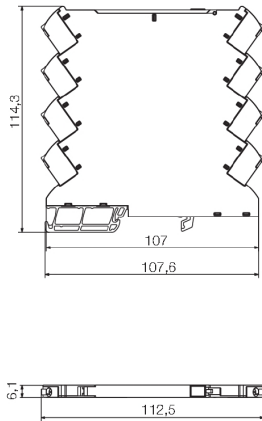
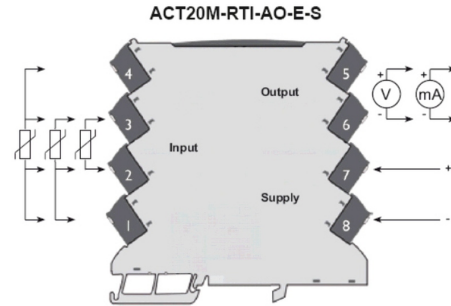
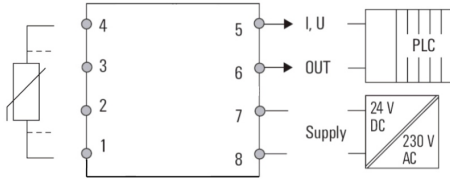
Approval/Certificate/Document of Conformity	Declaration of Conformity
Brochure/Catalogue	CAT 4.1 ELECTR 16/17 EN
Engineering Data	EPLAN, WSCAD
Software	DIP switch configuration tool
User Documentation	instruction sheet

Data sheet

**ACT20M
ACT20M-RTI-AO-E-S**

Weidmüller Interface GmbH & Co. KG
 Klingenbergstraße 16
 D-32758 Detmold
 Germany
 Fon: +49 5231 1429-0
 Fax: +49 5231 14292083
 www.weidmueller.com

Drawings



example for DIP switch setting
(with ACT20M tool software)