



Metral®

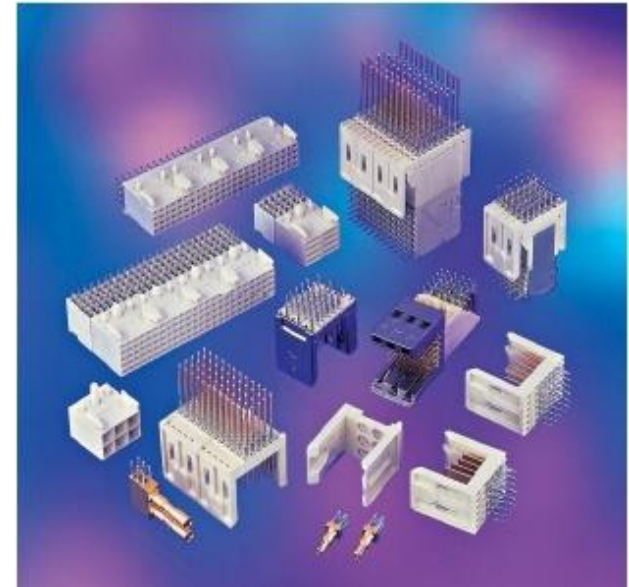
Product Presentation



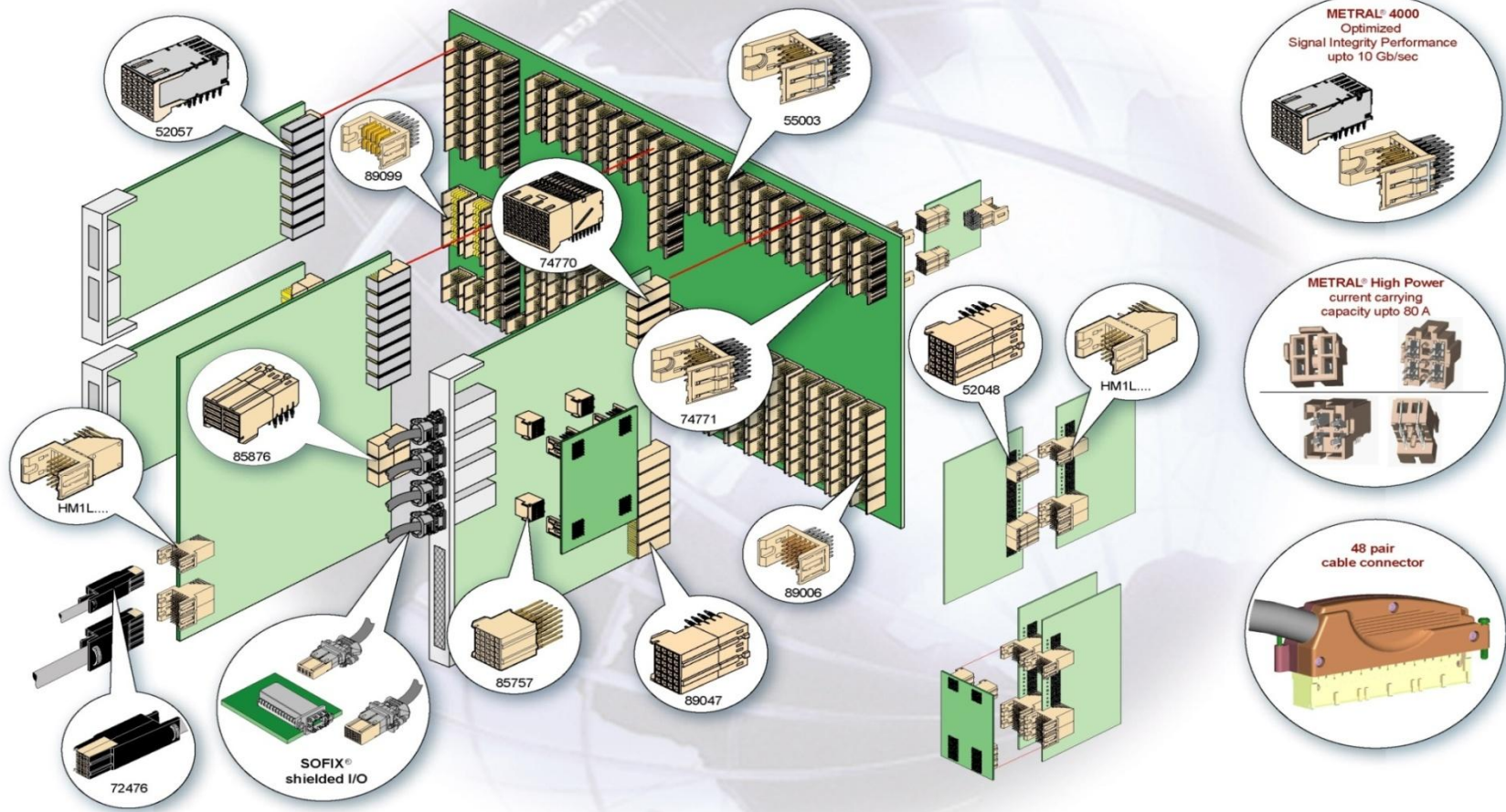
Metral® Product Overview



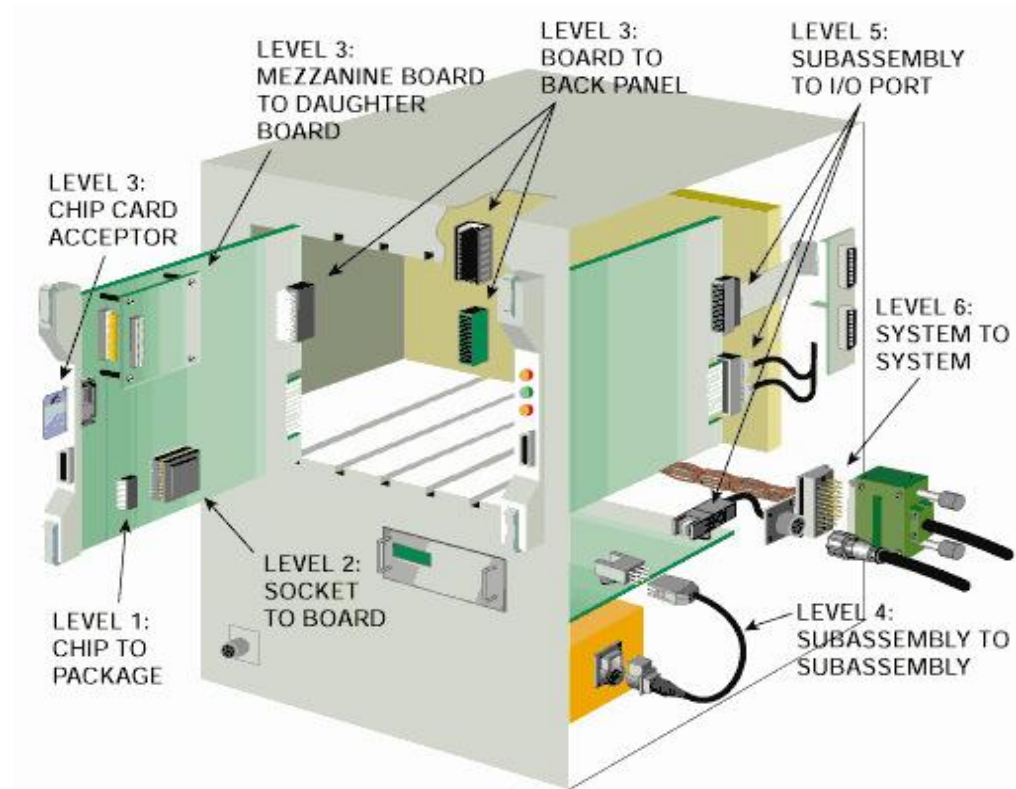
- Metral® is the most complete 2mm standard board-to-board and cable-to-board interconnect system designed in accordance with IEC 61076-4-104 and performance according to Telcordia® GR-1217 CORE
- Metral® is used for chassis based packaging in the communications, data and Industrial and Instrumentation segments
- Metral® has a wide variety in pin-headers, receptacles, monoblocks, cable connectors, hybrid connectors and accessories which enables you to build any board-to-board and cable-to-board application, standard or customized



METRAL® Family



Metral® Electronic Cabinet Packaging Level

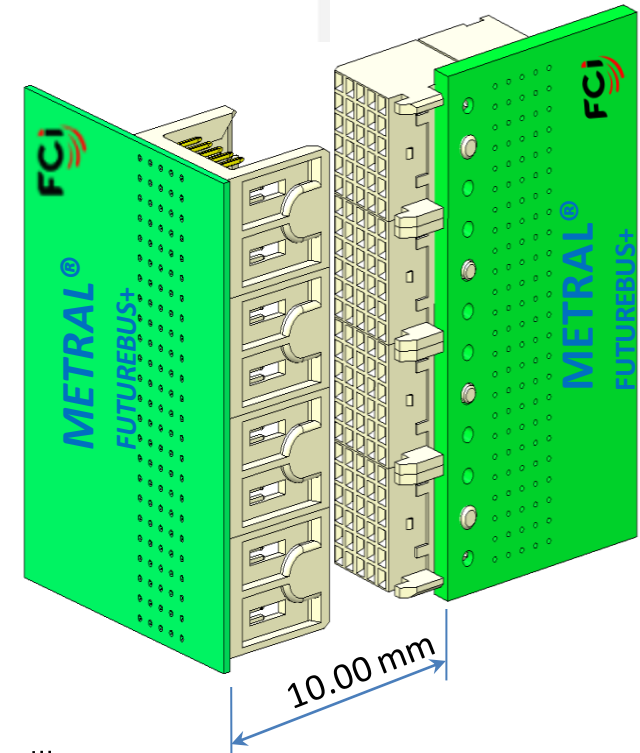


- Metral® is a system at Packaging Level 3 (Board to Board) with complementary solutions packaging Levels 4, 5 and 6

Metral® – Features



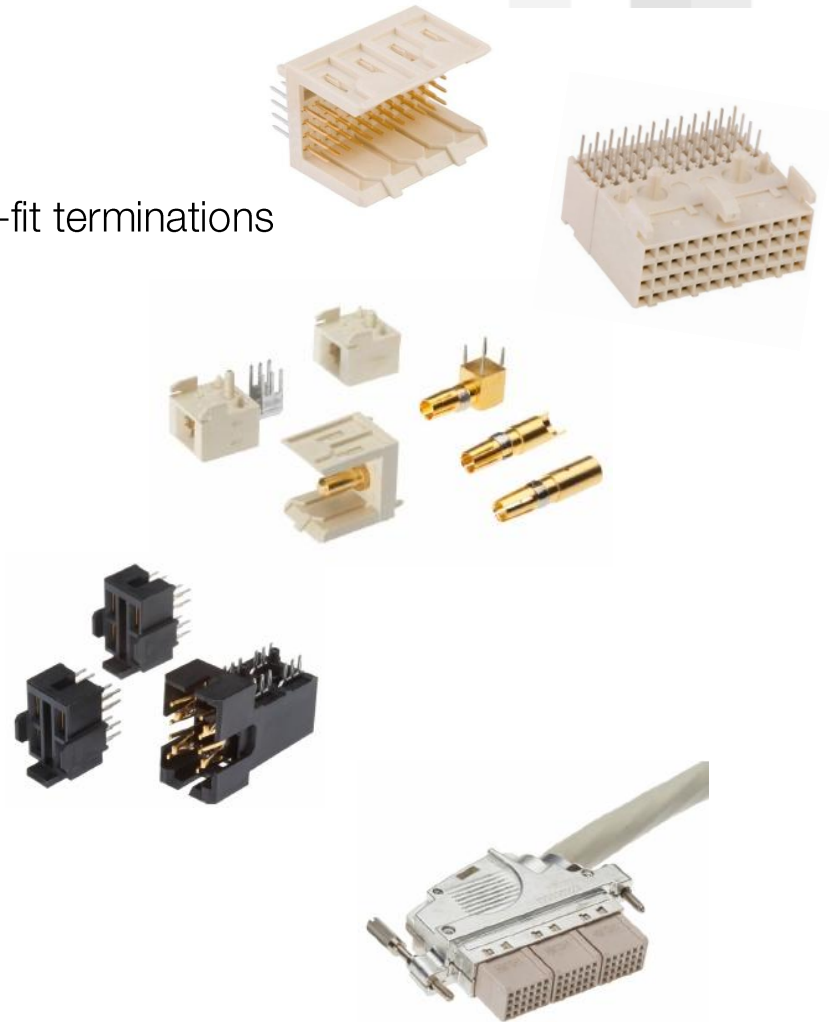
- Future Bus system
 - 2.00mm grid (0.079 in.)
(38% higher signal density than 2.54 mm DIN)
 - End-to-end stackable
 - 4 and 5 rows
 - Modular System
- Signal, Power, High Power, Coax
- Board-to Board and Cable-to-Board
- Standard or Reversed mounting
- Solder-to-board, Press-fit and pin-in-paste
- Performance –Data Throughput
 - Standard versions offer up to 622 Mb/s
- Board Mounted Metral® Connectors when fully mated will have a mating distance of 10mm from the rear edge of the daughter card to the front surface of the backplane



Metral® – Solutions



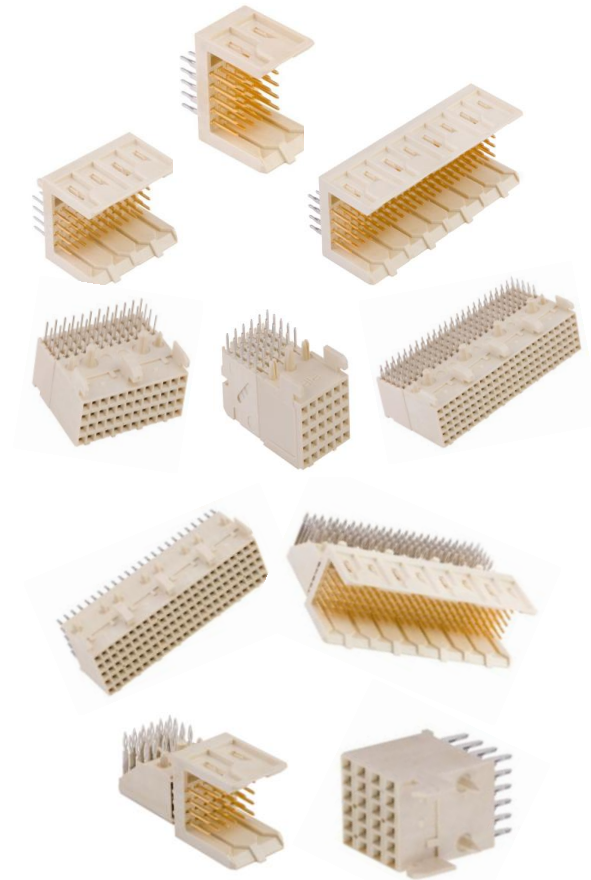
- Low-cost application solutions:
 - Press-Fit termination for backplanes
 - Solder-to-board, pin-in-paste and press-fit terminations for daughter cards
- Scalability and flexibility:
 - Mix low and high speed signal modules
 - Mix signal and power modules
- Power Distribution solutions:
 - Ranging from 3 amps up to 40 amps
 - Straight or inverse solutions
- Complete I/O solutions:
 - Rear-plug-up or front I/O
 - Shielded or non-shielded



Metral[®] Board Connectors

Vertical Headers & Right Angled Receptacles Right Angled Headers & Vertical Receptacles

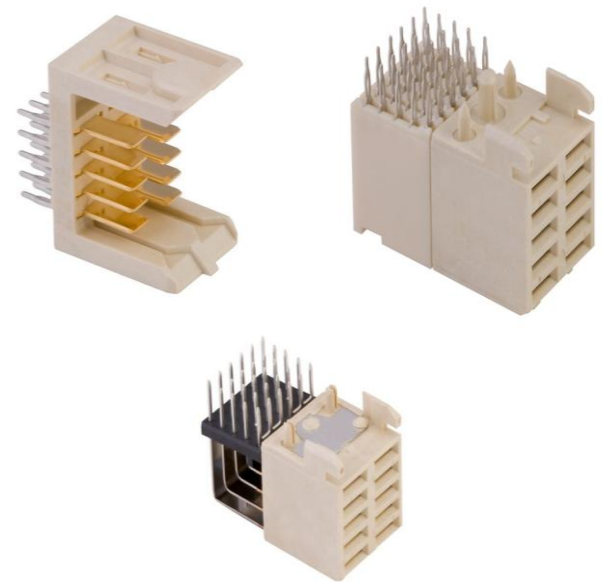
- Metral[®] Signal Connectors are available in Standard version of Vertical Headers & Right Angled Receptacles and Reversed version of Right Angled Headers & Vertical Receptacles
- Modular & Scalable by 1,2,4 & 8 Modules
- 250 contacts per 100mm connector length
- 4 and 5 row Versions
- Press-Fit, Solder to Board and Pin-in-Paste Terminations
- Fixing and Locating Pegs
- Current Rating 1 amp (All contacts Powered)
- Stackable alongside High Speed Metral[®] Connectors



Metral® Power Connectors



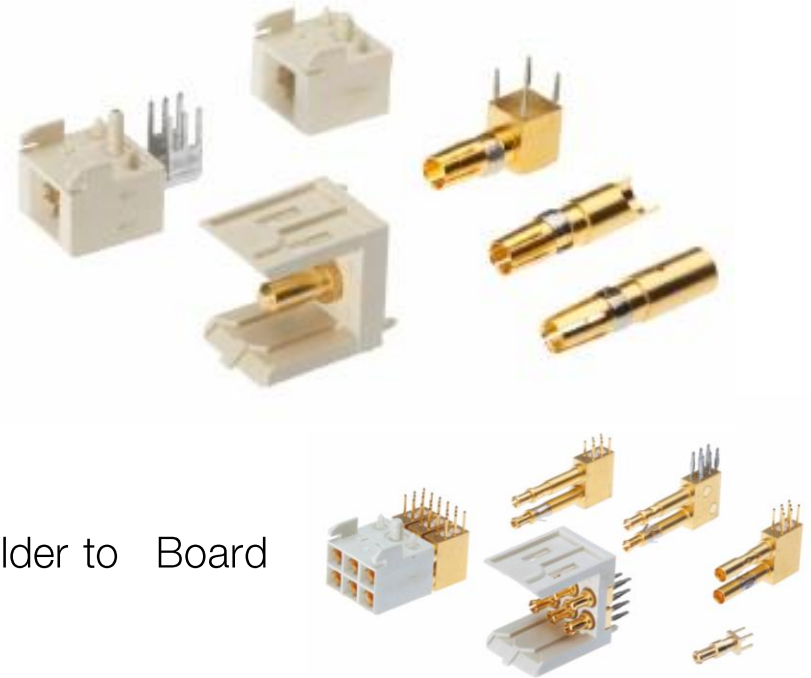
- Modular & Scalable
- 4 and 5 row Versions
- Press-Fit, Solder to Board and Pin-in-Paste Terminations
- Available in Standard version of Vertical Headers & Right Angled Receptacles and Reversed version of Right Angled Headers & Vertical Receptacles
- Current Rating 3 amps per contact



Metral® High Power & Coax Connectors



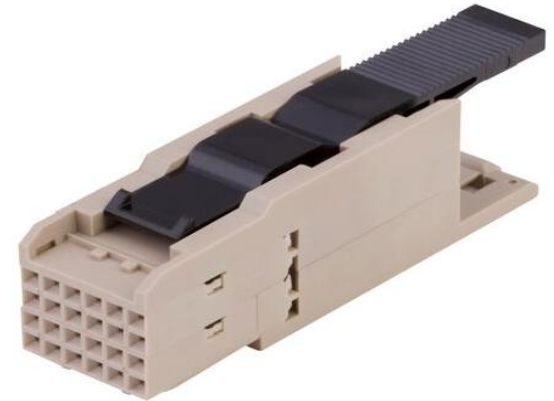
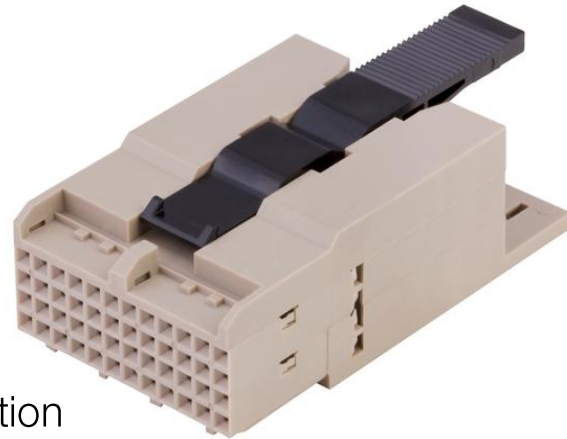
- Modular & Scalable
- Power & Mini Power Versions
- 40 amps current rating power inserts
 - Solder to Board Receptacle Contacts
 - Screw to Board Header Contacts
- Coax & Mini Coax Version
- Impedance 50 ohms & 75 ohms
- Mini Coax inserts – Header and Receptacle , Solder to Board



Metral® Cable Connectors



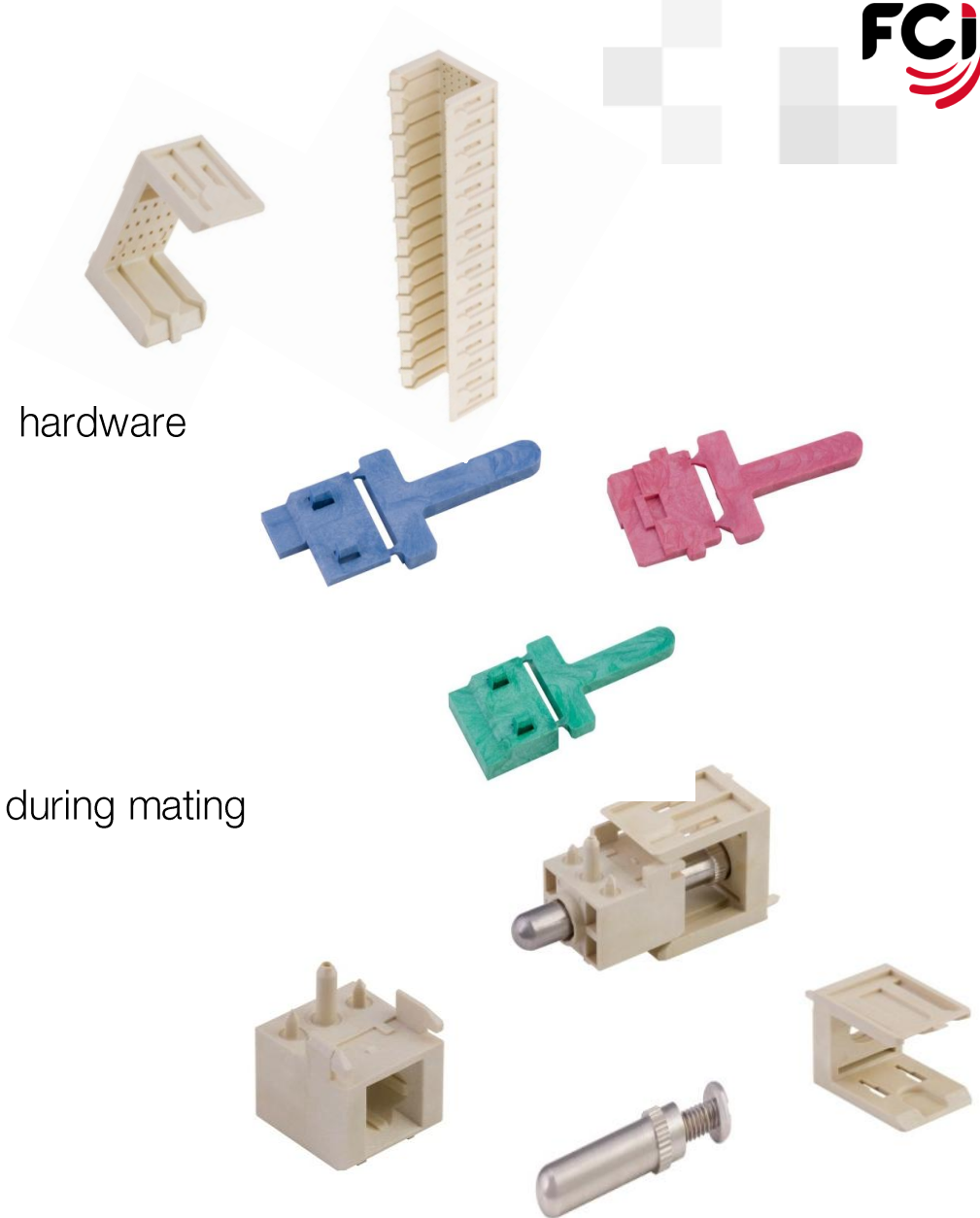
- 4 & 5 row versions
- Single & Dual Modules
- End to End Stackable
- Insulation Displacement Contact Termination
- Latching feature ensure positive locking of connectors



Metral® Accessories



- Shrouds
 - Single & Multi Module
 - 4 & 5 row versions
 - Force fits on pins, no mounting hardware
- Coding Keys
 - Different Colors
 - Optional extended length
 - Fully Polarized
- Guiding Systems
 - Stand alone system
 - Improves connector alignment during mating



Metral® Application/Market Segment



- Telecom
Wireless Base Stations, Switches, Transmission

- Data-Com
Bridges, Hubs, Routers, Concentrators

- Data Processing
Workstations, Work station servers, File servers, Hard disk arrays

- Industrial & Instrumentation
Medical, Avionics, Security Systems, Plant Process Analyzers, Control Systems



THANK YOU

