



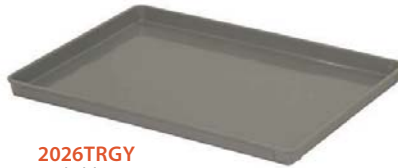
Modular Trays



Heavy-duty 18" x 26" white trays are NSF approved for use for food service or may be used for standard applications. Perimeter ends are reinforced for additional strength. 20" x 26" size offers a deep stacking tray. Both tray sizes are available in ESD complying to ANSI / ESD standards for the use in PC board assembly and handling. All trays are manufactured of fiberglass reinforced theroset material, allowing up to 200 lb. weight capacity when evenly distributed. Quantum's modular trays will withstand temperatures of -40°F to +350°F. 18" x 26" Trays available in White and ESD, 20" x 26" Trays are available in Gray, White and ESD.

Available in: ● Gray ○ White ● Black

| MODEL NO. | DIMENSIONS W" x L" x H" | SHIP WGT |
|---------------------------|-----------------------------------|-------------|
| 18" x 26" Trays | | |
| 1826TR | 18" x 26" x 1-1/8" White Tray | 4 lbs |
| 1826ESD | 18" x 26" x 1-1/8" Black ESD Tray | 4 lbs |
| 20" x 26" Stackable Trays | | |
| 2026TRGY | 20" x 26" x 1-1/2" Gray Tray | 5 lbs |
| 2026TRWT | 20" x 26" x 1-1/2" White Tray | 5 lbs |
| 2026ESD | 20" x 26" x 1-1/2" Black ESD Tray | 5 lbs |



2026TRGY
Stackable Tray



1826TR



1826ESD

Tray Slides



Efficiently utilize space between shelves using standard trays and/or bins.

- Available in 18" and 24" depths
- Accommodates up to 10 trays

| MODEL NO. | DESCRIPTION | SHIP WGT |
|------------|--------------------|-------------|
| Tray Slide | | |
| TS18C | 18" Tray Slide Set | 10 lbs |
| TS24C | 24" Tray Slide Set | 11 lbs |



Modular Tray Carts

Tray Carts are offered in half size and full size units, designed to handle work in process. ESD trays can be used on tray cart for conductive applications with the addition of conductive plastic split sleeves (WR-SSCO) and a drag chain (ESD-DC). Optional Tray Stop prevents trays from falling out. **Cart Finish:** Chrome

| MODEL NO. | DIMENSIONS W" x L" x H" | CAPACITY | SHIP WGT | TRAY STOP MODEL NO. |
|---------------------------|----------------------------|----------|-------------|------------------------|
| 39"H Side Load Tray Cart | | | | |
| TC-19 | 18" x 30" x 39" | 19 Trays | 45 lbs | TS32C |
| 69"H Side Load Tray Carts | | | | |
| TC-39 | 18" x 30" x 69" | 39 Trays | 74 lbs | TS62C |
| TC-31 | 21" x 30" x 69" | 31 Trays | 68 lbs | TS62C |
| 69"H End Load Tray Cart | | | | |
| TC-EL38 | 21-3/4" x 27" x 69" | 38 Trays | 74 lbs | TS62C |

Trays are sold separately.



TC-19 + 1826TR
(Trays sold separately)

200 lb. CAPACITY PER TRAY



TC-EL38
End Load Cart
(Trays sold separately)

Conductive Options



ESD-DC
Drag Chain



WR-SSCO
Plastic Conductive
Split Sleeve



TS62C
Tray Stop
(Optional)

TC-39 + 1826TR
Tray Stops can be used on back as shown
here or one in the back and one in the front.
(Trays sold separately)