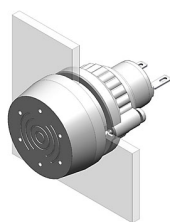


14-810.902 - Buzzer



Attention: The preview is based on a sample product. This can differ from your current configuration.

Mounting

Mounting cut-out Design \varnothing 22,3 mm raised

Front

Front shape round
Front dimension \varnothing 29 mm
Front cap colour nickel-plated
Front cap material Brass

Other Attributes

Weight 0,016 kg
Operating voltage 24 V DC

IP-Rating

Front protection IP65

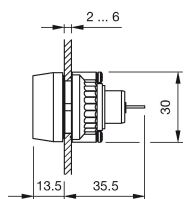
Connection Method

Terminal Solder 2.8 x 0.5 mm

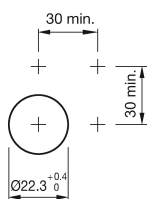
Function

Buzzer

Dimensions



Mounting cut-outs



Wiring diagram

