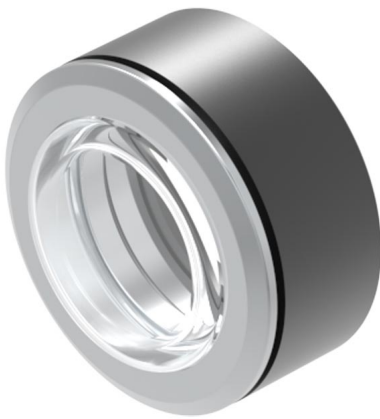


EAO – Your Expert Partner for Human Machine Interfaces

14-955.3 - Front bezel set with protective membrane, flush design

14-955.3 - Front bezel set with protective membrane, flush design



Attention: The preview is based on a sample product. This can differ from your current configuration.

Mounting

Design flush
Mounting cut-out Ø 30,5 mm

Front

Front dimension Ø 35 mm
Front bezel colour natural anodized
Front bezel material Aluminium
Front shape round

Other Attributes

Weight 0,015 kg

IP-Rating

Front protection IP67

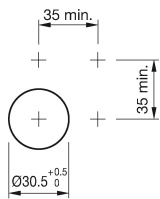
Actuator

Housing colour black
Housing material Plastic

EAO – Your Expert Partner for Human Machine Interfaces

14-955.3 - Front bezel set with protective membrane, flush design

Mounting cut-outs



Additional information

with transparent silicone membrane

For Illuminated pushbutton for front protection IP 67

Front ring to be mounted with a torque of 40 Ncm onto actuator

Before assembling remove the flat gasket of the switch

The colour of anodized aluminium parts can vary due to technical production reasons