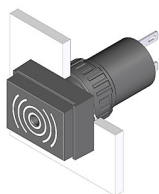


31-801.002 - Buzzer



Attention: The preview is based on a sample product. This can differ from your current configuration.

Mounting

Mounting cut-out Ø 16 mm
Design raised

Front

Front dimension 18 mm x 24 mm
Front shape rectangular
Front cap colour black
Front cap material Plastic

Other Attributes

Weight 0,015 kg
Operating voltage 10 ... 26 V DC

IP-Rating

Front protection IP40

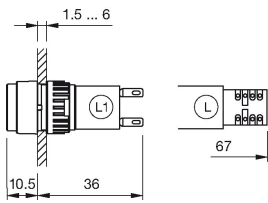
Connection Method

Terminal Solder 2.8 x 0.5 mm

Function

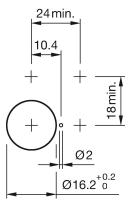
Buzzer

Dimensions

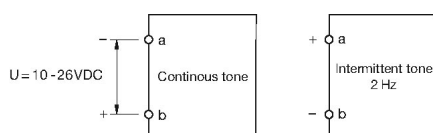


L = Solder terminal

Mounting cut-outs



Wiring diagram



Additional information

Further information see «Technical data»