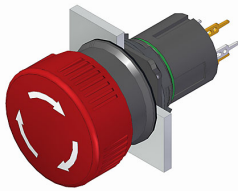


# EAO – Your Expert Partner for Human Machine Interfaces

## 51-252.026 - Stop switch complete

### 51-252.026 - Stop switch complete



*Attention: The preview is based on a sample product. This can differ from your current configuration.*

#### Mounting

Mounting cut-out Ø 16 mm  
Design raised

#### Front

Front dimension Ø 24.5 mm  
Front shape round

#### Other Attributes

Weight 0,011 kg

#### Operating-/Indication part

Lens material Plastic  
Lens colour red  
Lens profile Mushroom  
Lens optics opaque  
Lens illumination non-illuminative

#### IP-Rating

Front protection IP65

#### Connection Method

Terminal Universal 2.0 x 0.5 mm

#### Actuator

Switching action Maintain

#### Switching element

Switching system Low-level element  
Contacts 2 NC  
Switching voltage 42 V AC/DC  
Switching current 0,1 A  
Contact material gold-plated silver

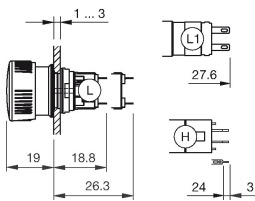
#### Function

Stop switch

# EAO – Your Expert Partner for Human Machine Interfaces

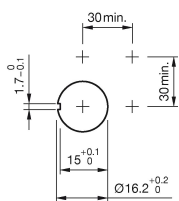
51-252.026 - Stop switch complete

## Dimensions

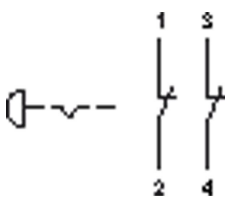


H = Universal terminal 2.0 x 0.5 mm

## Mounting cut-outs



## Wiring diagram



## Additional information

Marking arrows

If the anti-twist ring is not used the panel thickness increases to 4 mm

## Legend

Contacts: NC = Normally closed, NO = Normally open

Switching action: C = Maintained