

Number of contacts

6-64



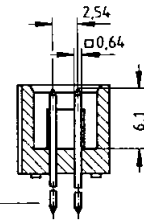
Low-profile male header, straight solder pins

Identification	No. of contacts	Part number	Drawing	Dimensions in mm
----------------	-----------------	-------------	---------	------------------

Male header with straight solder pins
Length: 2.9 mm

6	09 18 506	□ 324
10	09 18 510	□ 324
14	09 18 514	□ 324
16	09 18 516	□ 324
20	09 18 520	□ 324
26	09 18 526	□ 324
30	09 18 530	□ 324
34	09 18 534	□ 324
40	09 18 540	□ 324
50	09 18 550	□ 324
60	09 18 560	□ 324
64	09 18 564	□ 324

No. of contacts	A	B	E
6	15.2	12.78	2.54 x 2 = 5.08
10	20.3	17.86	2.54 x 4 = 10.16
14	25.4	22.94	2.54 x 6 = 15.24
16	27.9	25.48	2.54 x 7 = 17.78
20	33.0	30.56	2.54 x 9 = 22.86
26	40.6	38.18	2.54 x 12 = 30.48
30	45.72	43.26	2.54 x 14 = 35.56
34	50.8	48.34	2.54 x 16 = 40.64
40	58.4	55.96	2.54 x 19 = 48.26
50	71.3	68.66	2.54 x 24 = 60.96
60	84.0	81.36	2.54 x 29 = 73.66
64	89.1	86.44	2.54 x 31 = 78.74

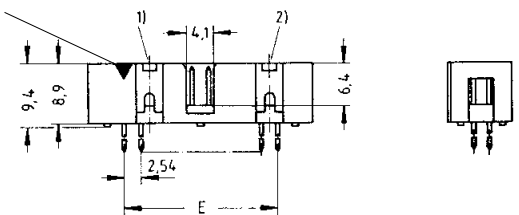


Solder pins for 1 ± 0.1 mm dia. hole

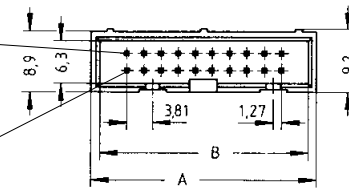
Male header with straight solder pins
Length: 4.5 mm

6	09 18 506	□ 322*
10	09 18 510	□ 322*
14	09 18 514	□ 322*
16	09 18 516	□ 322*
20	09 18 520	□ 322*
26	09 18 526	□ 322*
30	09 18 530	□ 322*
34	09 18 534	□ 322*
40	09 18 540	□ 322*
50	09 18 550	□ 322*
60	09 18 560	□ 322*
64	09 18 564	□ 322*

Marking No. 1 contact

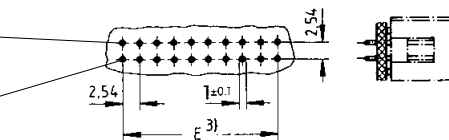


No. 2 contact



No. 1 contact

No. 2 contact



No. 1 contact

For performance level 3 please specify digit 7
For performance level 2 please specify digit 6
S4 = 0.76 µm (30 µinch) Au or PdNi equivalent

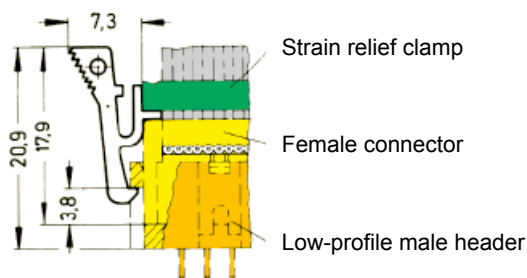


Identification	Part number	Drawing	Dimensions in mm
----------------	-------------	---------	------------------

Locking lever for female connector with strain relief
in conjunction with low-profile male header

When the security of latching is required and space is a premium, these locking levers can be fitted onto the strain relief of the HARTING female connector.

09 18 000 9905⁴⁾



* Not normally kept in stock

¹⁾ No polarization slot for 6, 10 or 14 way male header
²⁾ No polarization slot for 6 way male header

³⁾ Pitch tolerance: ± 0.1
⁴⁾ Order 2 per female connector

SEK