

PC Board Sockets

Surface Mount, Low Profile

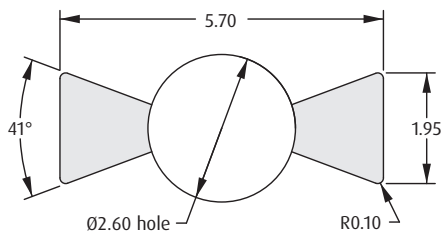
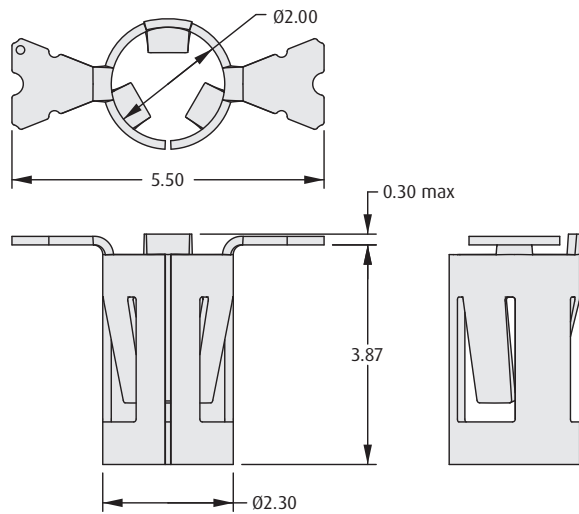
The SYCAMORE Contact is a low-profile single-piece open-ended socket design.

- ❖ 3 points of contact for enhanced reliability.
- ❖ SMT product is pick and place-able using standard assembly machines.
- ❖ Beryllium Copper base material for enhanced temperature range of -50°C to +125°C.
- ❖ Gold plating for improved durability and decreased wear.



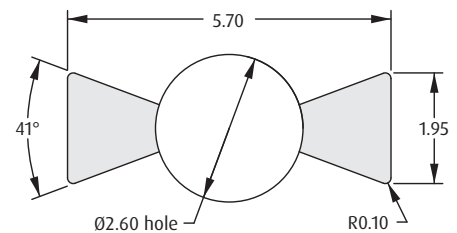
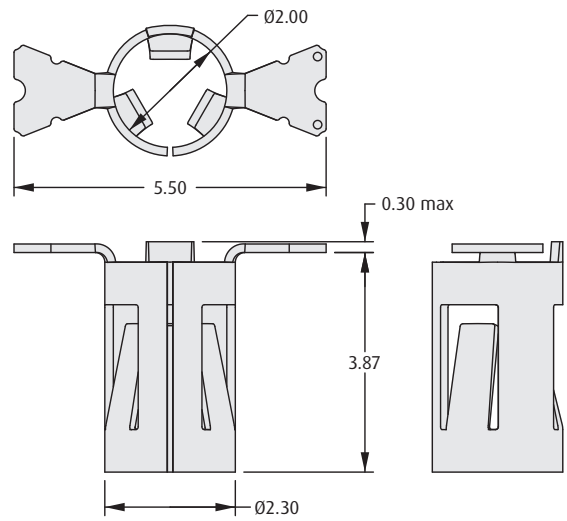
SOCKETS

TOP ENTRY



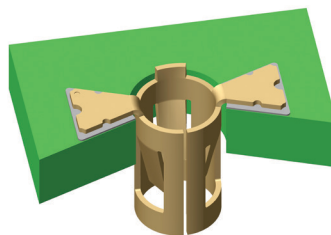
Recommended PC Board Pattern

BOTTOM ENTRY



Recommended PC Board Pattern

Orientation of SMT Socket in PCB



HOW TO ORDER

S91X1 - 45 R

SERIES CODE

S9111	Top Entry, Ø1.5 to Ø1.9mm Mating pin
S9121	Bottom Entry, Ø1.5 to Ø1.9mm Mating pin
S9131	Top Entry, Ø0.8 to Ø1.3mm Mating pin
S9141	Bottom Entry, Ø0.8 to Ø1.3mm Mating pin

PACKAGING

R	Tape & Reeled
----------	---------------

FINISH

45	Gold
-----------	------

All dimensions in mm.