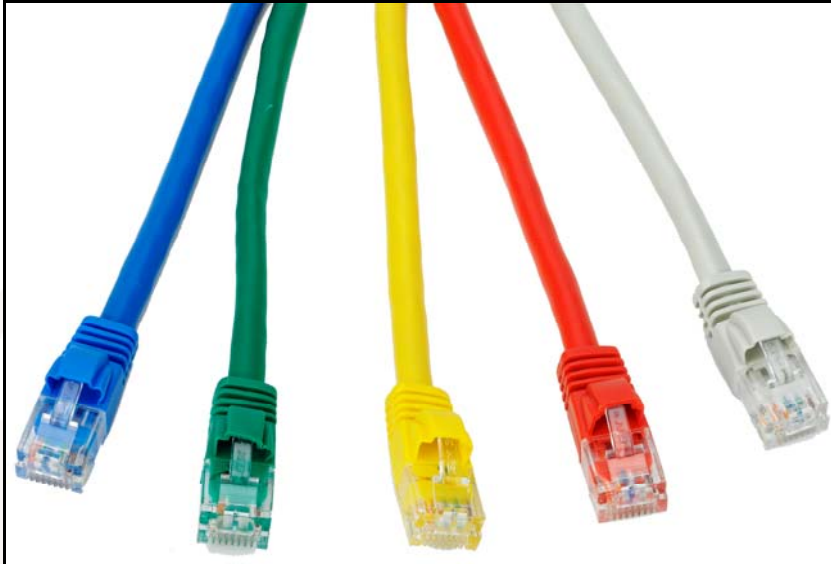


Category 6 Patch Leads



Category 6 Patch Leads (SP*?)

* = Length

? = Colour

Features

- Offer full compliance with the Category 6 standard at component level (TIA/EIA-568-B.2-1)
- Fitted with flush moulded snag-less strain relief boots, suitable for patching into high density hubs and switches
- Individually polythene bagged and marked with length
- Colours: grey, red, yellow, green, black and blue. Additional colours available to order
- 100% tested

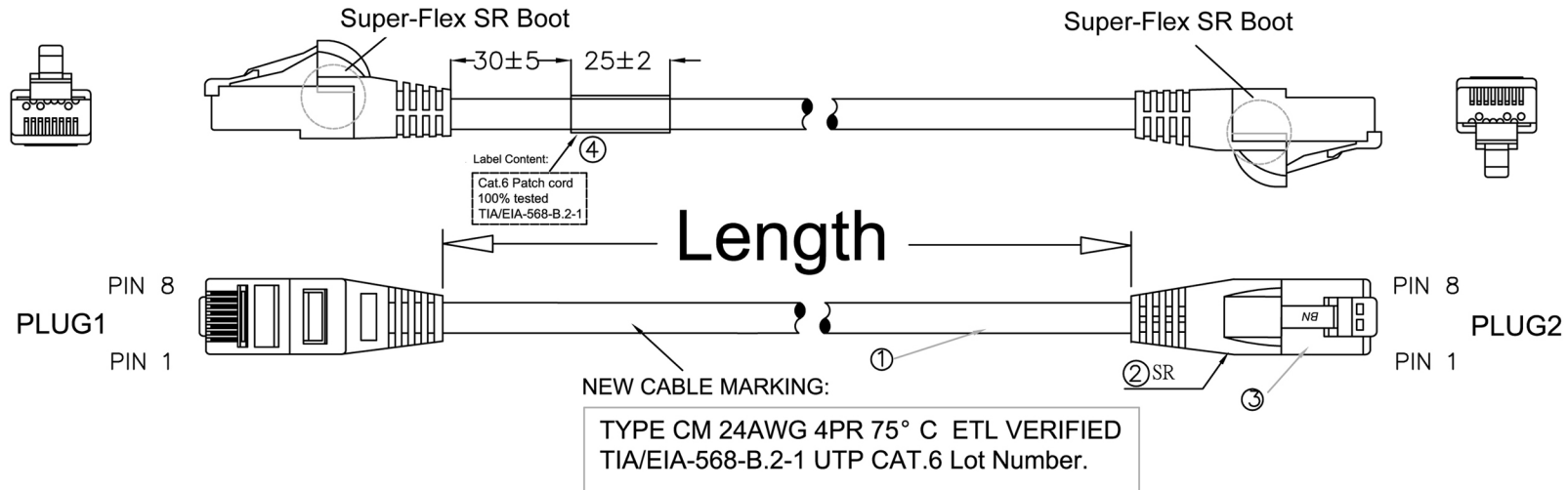
Specifications

Materials

- Contacts: 50 μ m/1.27 μ m gold plated
- Conductors: 24 AWG stranded bare copper with cruciform divider
- Jacket: PVC

ROHS Compliant

Code: SP*?



WIRING: T568B

PLUG1	PLUG2	COLOR
PIN1	PIN1	WHITE/ORANGE
PIN2	PIN2	ORANGE
PIN3	PIN3	WHITE/GREEN
PIN4	PIN4	BLUE
PIN5	PIN5	WHITE/BLUE
PIN6	PIN6	GREEN
PIN7	PIN7	WHITE/BROWN
PIN8	PIN8	BROWN

Note:

1.Wiring:T568B

2.Tolerance:

Length<=1M,Tolerance⁺⁵⁰mm

Length>1M<=5M,Tolerance± 50mm

Length>5M,Tolerance± 100mm

④	Label	PAPER	WHITE BACKED 25x35mm	1	KLXXX603
③	Insert2	PC	---	2	PG88XKV0BX00-IH1
	Insert1	PC	---	2	PG88XKV00Xf0-IH2
	PLUG	PC	8P8C-F-BN Marking	2	PG88XKV0BXf0-07
②	MOLDING	PVC	SR	2	---
①	Cable	PVC	UTP CAT6 24AWG	1	TC8C24XXXCSS362-T
NO.	Name	Material	Specification	Qty	REMARK
APPD.			P/N.	SP*? (*= Length) (?=Colour)	
CHKD.			FILE	TLXX8C24XXXS946.DWG	
DR.			TITLE	TL	