

Part number

M7PE 06 L20



Brief description:

surface mounting housing with single lever, size "44.27", M20, E-Xtreme® version, IP66/IP67/IP69

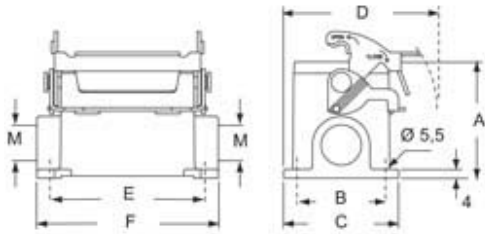
Product description		General ordering information	
Version	E-Xtreme® V-TYPE version	EAN13 code	8015747250504
Series	Surface mounting housings with 1 lever	Packaging Information	
Product type	with stainless steel lever	Packaging length	475,00 mm
Family	C7 - CV and M7 - MV enclosures, V-Type lever version	Packaging height	160,00 mm
Size	size "44.27"	Packaging width	140,00 mm
Technical data		Packaging weight	0,01 kg
Material	metal	Packaging volume	10,64 dm ³
IP degree of protection	IP66/IP67/IP69	Packaging description	Carton box
Cable entry	M20	Packaging quantity	10 Pcs
Further technical details		Packaging EAN code	8015747250634
Weight	1,00 g	Sub-packaging weight	0,01 kg
		Sub-packaging description	Plastic pakaging
		Sub-packaging quantity	5 Pcs
		Sub-packaging EAN barcode	8015747250641

Part number

M7PE 06 L20



Catalogue drawings



type	A	B	C	D	E	F
M7PE 06 L	53	40	52	70	70	82
M7APE 06 L	73	45	57	72,5	70	82